

VOLUME 1 WINTER 1982

CATALOG OF  
ADDITIONAL PRODUCTS  
FOR YOUR ATARI®  
HOME COMPUTER

# ATARI® SPECIAL ADDITIONS™

\$3.00

## **ATARI MAKES NO WARRANTY FOR NON-ATARI PRODUCTS**

Atari makes no warranty, either express or implied, for any products appearing in this catalog which are not manufactured by Atari. Consumers are advised that should any of the products included in this catalog result in any problems, injury, or damages, they are limited to seeking relief only from the respective manufacturers of said products. Atari neither assumes nor authorizes any person to assume for Atari any liability in connection with the sale or use of products not manufactured by Atari, and there are no oral agreements or warranties collateral to or affecting this policy. Furthermore, consumers are advised that any internal or other modification, alteration, or enhancement to the ATARI Home Computer System by means of any product not manufactured by Atari can cause the Home Computer System to violate the conditions of its safety and regulatory agency approvals and shall result in the voiding of the warranty covering the ATARI Home Computer products so affected.

# TABLE OF CONTENTS

## **SOFTWARE**

Personal Finance .....	1
Record Keeping .....	2
Communications & Information .....	3
Word Processing .....	3
Games .....	4
Educational .....	15
Computer Information Services .....	23
Business .....	23
Professional .....	24
Graphics .....	24
Languages & Utilities .....	25

## **HARDWARE**

Disk Drives .....	27
Modems .....	27
Printers .....	29
Miscellaneous .....	32

## **ACCESSORIES**

Cases .....	37
Paper .....	38
Cables .....	39
Miscellaneous .....	40

## **FURNITURE** .....

43

## **PUBLICATIONS**

Books .....	45
Magazines .....	47

## **ATARI COMPUTER USERS' GROUPS** .....

48

## **COMPANY INDEX** .....

52

## **PRODUCT INDEX** .....

55

## HOW TO USE ATARI® SPECIAL ADDITIONS™

This catalog is divided into the major categories shown in the Table of Contents. Each product listing is followed by the name of the manufacturer.

In the back of the catalog is a company index with addresses and phone numbers.

In the **software** categories, additional product information is provided with each product. Abbreviations used are defined at the bottom of each page.

Example:

### PRODUCT NAME

① ② ③ ④ ⑤ ⑥ ⑦  
14+, CAS, ATARI BASIC, 16K, IL, REQ, \$10.00

Company Name

① ② ③ ④  
CODE: Age range; CAS(ette), DIS(kette), ROM (cartridge); Additional cartridge required [ATARI BASIC, MUSIC (Composer), NONE]; RAM memory required; Controllers required [JC (joystick controllers), PC (paddle controllers), NONE or OTHER]; Printer [REQ(uired), OPT(ional), NO]; Price  
⑤ ⑥ ⑦

For **hardware**, additional Computer system requirements, **if any**, are included with each product listing. The abbreviations used are defined at the bottom of each page.

Example:

### PRODUCT NAME

① ② ③ ④  
DD, SpPrt, \$199.00

Company Name

① ③ ②  
CODE: K=Minimum RAM memory required; DD=ATARI 810" Disk Drive; PRT=Printer; PR ATARI 410" Program Recorder; SP Special (non-ATARI); INT ATARI 850" Interface Module (SP-INT=Special non-ATARI interface); ATARI BASIC Cartridge

# SOFTWARE

## PERSONAL FINANCE

### SCITOR\* PERSONAL FINANCE AND RECORDKEEPING PACKAGE

The Scitor Personal Finance and Record Keeping package provides your home with a sophisticated yet simple automated records system. You can easily organize and keep track of expenses, checks, credit cards, energy utilization, jogging logs, diet and fitness programs, and other personal records. Reports, high resolution graphs, and color bar charts can be generated from the records providing you with insight into expenses, budgets and progress versus goals. Additionally, a General Ledger capability is provided allowing use of this package by a small business. Major features of the package include menu option selection, calculator support during data input, query oriented inputs, data base search and update features, and user specification of simple to complex formulas for generating summary reports, tables, graphs, and color bar charts. The combination of record keeping, ledger generation, report generation, and interactive graphics makes this product unique for its price. You can buy this product at any ATARI\* Computer dealer.

10+, DIS, ATARI BASIC, 40K, NO, OPT., \$75.00

**Scitor Corporation**

\*Indicates trademark of Scitor Corp.

## FAMILY EXPENSES

ADULT, DIS, NONE, 32K, NONE, NO, \$24.95

**Avatar Software**

## DATAGRAPH

ALL, DIS, NONE, 16K, NONE, NO, \$14.95

**Avatar Software**

## PERSONAL FINANCE SYSTEM

ADULT, DIS, NONE, 24K, NONE, NO, \$34.95

**Dynacomp, Inc.**

## PERSONAL LOAN ANALYSTS

ADULT, CAS, ATARI BASIC, 8K, NONE, NO, \$14.95  
ADULT, DIS, ATARI BASIC, 8K, NONE, NO, \$18.95

**Zapata Microsystems**

## MICROHOME

Ten programs.

8+, CAS, MICROSOFT BASIC, 32K, NONE, OPT, \$24.95

**Compumax**

## BUDGET

ADULT, DIS, NONE, 32K, NONE, NO

**Avatar Software**

## NUMBER GRAPH

ALL, DIS, NONE, 24K, NONE, NO \$20.00

**Avatar Software**

## PERSONAL FINANCE

ADULT, DIS, ATARI BASIC, 32K, NONE, OPT, \$34.95

**Microage Computer Store**

## PERSONAL BANKER

ADULT, DIS, ATARI BASIC, 32K, NONE, REQUIRED, \$18.95

**Zapata Microsystems**

## HOME ECONOMICS

Six programs for use at home.

8+, CAS, ATARI BASIC, 32K, NONE, OPT, \$29.95

**University Software, Inc.**



CODE: Age range; CAS(sette), DIS(kette), ROM (cartridge); Additional cartridge required [ATARI BASIC, MUSIC (Composer)™, NONE]; RAM memory required; Controllers required [JC (joystick controllers), PC (paddle controllers), NONE or OTHER]; Printer [REQ(quired), OPT(ional), NO]; Price

## RECORD KEEPING

### DATA HANDLER\*

DATA HANDLER\* will organize and print your mailing lists, product catalogs, inventories, client information, stock market data, real estate data, and much more. DATA HANDLER solves your record-keeping problems with remarkable ease. You can define, enter, change, sort, and search your records—even design your own reports and labels.

ADULT, DIS, ATARI BASIC, 40K, NONE, NO, \$100.00

**High Technology Software Products, Inc.**

\*Indicates trademark of High Technology Software Products, Inc.

### MINI-DATABASE/DIALER

Stores and edits up to 8 lines of information such as name, address, message, or anything the user wants. Sorts, prints, searches, and pages through your data . . . plus, if you have phone numbers in your data and a touch tone phone, the program will dial the numbers for you . . . a computerized dialer!

12+, CAS, ATARI BASIC, 16K, NONE, OPT., PHONE, \$24.95  
12+, DIS, ATARI BASIC, 16K, NONE, OPT., PHONE, \$24.95

**Santa Cruz Educational Software**

### MAILING LIST VERSION 1.0

ADULT, DIS, NONE, 32K, NONE, REQ, \$45.00

**H.E.L. Laboratories, Inc.**

### MAILING LIST VERSION 2.0

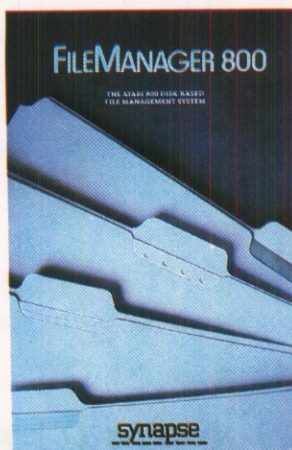
ADULT, DIS, NONE, 32K, NONE, REQ, \$45.00

**H.E.L. Laboratories, Inc.**

### MAIL LIST 2.2

ADULT, DIS, NONE, 32K, NONE, \$34.95

**Dynacomp, Inc.**



### FILEMANAGER 800\*

THE ATARI® 800™ HOME COMPUTER DISK-BASED FILE MANAGEMENT SYSTEM.

FILEMANAGER 800 is a powerful personal, as well as professional tool. The full use of graphics and sound make FILEMANAGER 800, an extremely easy to use file-keeping system.

**FILEMANAGER 800 provides:**

- User defined formats
- Index on any field at any time
- Ultra fast sort
- Wild card search
- Up to 9 pages per record
- Full screen edit
- Search on any combination of fields
- Format lists and mailing labels
- Self-prompting single keystroke commands
- Automatic Data compaction
- Combine and convert files
- Change format on existing files
- Elegant human engineering
- Exclusive Datalock® electronic key protection
- And much, much more . . .

Use FILEMANAGER 800 to create mailing lists, inventory and business records, customer lists, all customized to your own needs!

12+, DIS, ATARI BASIC, 40K, NONE, OPT., \$94.50

**Synapse Software**

\*Indicates trademark of Synapse Software.

### AUTOMATIC DIALER

Similar to the Mini-Database Dialer, stores names and phone numbers, then sorts them and if you want even dials the numbers (touch tone phone required plus 16K cassette/24K disk).

12+, CAS, ATARI BASIC, 16K, NONE, NO, PHONE, \$14.95  
12+, DIS, ATARI BASIC, 24K, NONE, NO, PHONE, \$14.95

**Santa Cruz Educational Software**

### 200 YEAR CALENDAR

ALL, CAS, ATARI BASIC, 8K, NONE, NO, \$9.95  
ALL, DIS, ATARI BASIC, 8K, NONE, NO, \$13.95

**Zapata Microsystems**

### MAIL LIST

12+, DIS, ATARI BASIC, 40K, NONE, REQ, \$24.95

**Datasoft, Inc.**

### DFILE

ALL, DIS, ATARI BASIC, 32K, NONE, OPT, \$19.95

**Microage Computer Store**

### LJK UTILITY MAIL/MERGE\*

Menu drive, easy to use, **fast**, machine language program allows the conversion of ATARI DOS files, VisiCalc\*\* files and other standard files to become compatible for editing with Letter Perfect\* word-processing. Combined with Letter Perfect\*, user may create limited data base files for producing form letters and mailing labels.

#2004 LJK Utility-Mail/Merge disk based.

ALL, DIS, NONE, 16K, NONE, OPT, \$29.95

**LJK Enterprises, Inc.**

\*Indicates trademark of LJK Enterprises, Inc.

\*\*Indicates trademark of Personal Software, Inc.

## CCA DATA MANAGEMENT

ADULT, DIS, NONE, 40K, NONE, NO, \$19.95

C E Software

## BOB'S BUSINESS

Fourteen small programs that do many of the simple business chores around the home, all obtained from a master menu. Examples are checkbook balancer, mortgage comparisons, interest on investment, and amortization tables. If needed, output can be sent to a printer. Recommended for new owners who don't have a library of programs yet.

15+, CAS, ATARI BASIC, 16K, NONE, OPT., \$14.95

15+, DIS, ATARI BASIC, 16K, NONE, OPT., \$14.95

Santa Cruz Educational Software

## DATA PERFECT \*

Complete data base program. **Fast** machine language program is designed for maximum user control. Create your own data base, and design the screen format for your specific needs. This **easy to use** program allows you to create, add to, edit, print, and fully manipulate data as needed. You have complete control to search and sort data base. Data files created may be accessed from Letter Perfect\* word-processing to send personalized form letters and prepare mailing labels.

#2003 Data Perfect\* version 1.0 disk based program.

ALL, DIS, NONE, 32K, NONE, OPT, \$99.95

LJK Enterprises, Inc.

\*Indicates trademark of LJK Enterprises, Inc.

## BOWLERS' DATABASE

Provides the league bowler with the ability to record and retrieve years of scores providing permanent records. Various formats are included for calculating averages, series highs, etc.

12+, CAS, ATARI BASIC, 16K, NONE, OPT, \$14.95

12+, DIS, ATARI BASIC, 24K, NONE, OPT, \$14.95

Santa Cruz Educational Software

## WORD PROCESSING

### MINI-WORD PROCESSOR

It is suitable for simple editing of text, accepts most control characters for your printer, and stores the text. The program allows up to 9 screens of text to be stored in memory.

ALL, CAS, ATARI BASIC, 32K, NONE, REQ, \$14.95

ALL, DIS, ATARI BASIC, 32K, NONE, REQ, \$14.95

Santa Cruz Educational Software

## COMMUNICATIONS & INFORMATION

### AUDIBLE DISASSEMBLER

ADULT, CAS, ATARI BASIC, 8K, NONE, NO, \$9.95

ADULT, DIS, ATARI BASIC, 18K, NONE, NO, \$9.95

Color Computer Concepts

### INTELINK

ADULT, DIS, NONE, 24K, NONE, OPT., \$49.95

Dynacomp, Inc.



### DECISION MAKER

12+, CAS, ATARI BASIC, 8K, NONE, NO, \$8.95

12+, DIS, ATARI BASIC, 18K, NONE, NO, \$8.95

Color Computer Concepts

### PERSONAL EDITOR

ALL, DIS, NONE, 32K, NONE, NO, \$24.95

Avatar Software

### MASTERPAC

ADULT, DIS, ATARI BASIC, 32K, NONE, OPT, \$79.95

H&E Computronics, Inc.

### BUSINESS PAC 100

ADULT, DIS, ATARI BASIC, 32K, NONE, OPT, \$99.95

H&E Computronics, Inc.

### THE LETTER WRITER

ADULT, DIS, NONE, 24K, NONE, OPT, \$19.95

C E Software

# WORD PROCESSING

CONTINUED

## LETTER PERFECT\*

### Wordprocessing for professionals.

Fast, machine language program that is user orientated. This single load, menu driven program allows the user to prepare and print professional appearing text on MX\*\* Series Epson Printers or the ATARI 825™ 80-Column Printer. Right hand justification is allowed in all fonts including proportional font. Fonts may be mixed within body of line and body of letter. Data Base Merge with Data Perfect\* to prepare form letters and mailing labels. Format of document (margins, line spacing, font type, etc.) may be changed at will within the document. Print or screen format a single page within a multipage document. Multiple copies allowed. Features: File merge, block movement, header and footers, auto page numbering, search and replaces, underlining, boldface, superscripts, subscripts, insert character/line, delete character/line, auto centering, changeable tabs. **Letter Perfect\* ROM version works with any parallel printer.**

#2001 Letter Perfect\* version 2.1 disk base version. #2005 Letter Perfect\* ROM version.

ALL, DIS, NONE, 16K, NONE, OPT, \$149.95  
ALL, ROM, NONE, 16K, NONE, OPT,  
\$249.95

**LJK Enterprises, Inc.**

\*Indicates trademark of LJK Enterprises, Inc.

\*\*Indicates trademark of EPSON America, Inc.

## TEXT WIZARD

ALL, DIS, NONE, 32K, NONE, OPT., \$99.95

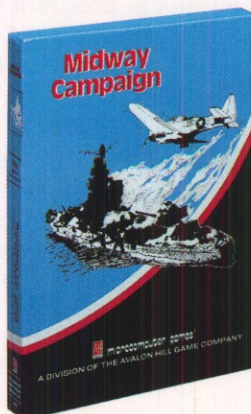
**Datasoft, Inc.**

## FORM LETTER SYSTEM

ADULT, DIS, NONE, 32K, NONE,  
REQUIRED, \$21.95

**Dynacomp, Inc.**

# GAMES



## MIDWAY CAMPAIGN

Your computer controls a huge force of Japanese ships whose objective is to invade and capture Midway Island. In the actual engagement, the Japanese made several tactical errors which cost them the battle. Your computer probably won't make the same mistakes! You command the badly outnumbered and outranged U.S. Naval Forces. Your only advantage is surprise.

12+, CAS, ATARI BASIC, 24K, NONE,  
NO, \$15.00  
12+, DIS, ATARI BASIC, 32K, NONE,  
NO, \$20.00

**Avalon Hill Microcomputer  
Games, Inc.**

## TARGET BLOCKADE

ALL, CAS, ATARI BASIC, 8K, JC, NO, \$9.95

**West Coast Software**

## SATAN'S SATELLITE

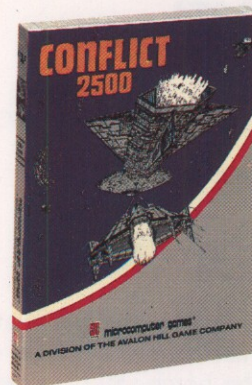
10+, CAS, ATARI BASIC, 8K, NONE, NO,  
\$12.95

**West Coast Software**

## BATTLE WARP

ALL, CAS, ATARI BASIC, 16K, JC, NO,  
\$14.95

**West Coast Software**

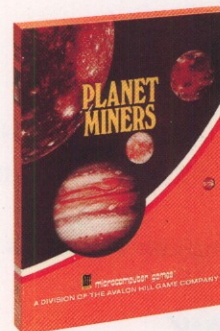


## CONFLICT 2500

In 2500 AD, earth is threatened by attacking aliens programmed with an infinite number of attack strategies with which to tease the player who must defend earth. A variety of spaceships on the screen adds an extra dimension to the excitement and suspense of this clever SF game.

10+, CAS, ATARI BASIC, 32K, NONE,  
NO, \$15.00  
10+, DIS, ATARI BASIC, 40K, NONE,  
NO, \$20.00

**Avalon Hill Microcomputer  
Games, Inc.**



## PLANET MINERS

One to four players compete with each other and the computer to stake valuable mining claims throughout the solar system in the year 2050. Each player must decide which ships to send to which planets and when to try "dirty tricks" like a sabotage and claim jumping.

12+, CAS, ATARI BASIC, 24K, NONE,  
OPT., \$15.00  
12+, DIS, ATARI BASIC, 32K, NONE,  
OPT., \$20.00

**Avalon Hill Microcomputer  
Games, Inc.**

## THE QUEST

10+, DIS, ATARI BASIC, 32K, NONE, NO, \$19.95

Survival Software

## CHECKER KING

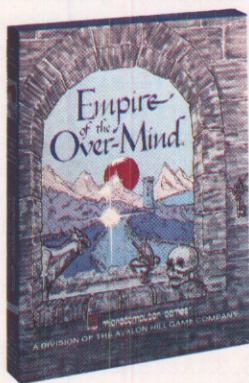
8+, CAS, NONE, 8K, NONE, NO, \$19.95

Personal Software, Inc.

## MICROCHESS

10+, CAS, NONE, 8K, NONE, NO, \$19.95

Personal Software, Inc.



## EMPIRE OF THE OVERMIND

Enchanting solitaire game. Embark upon an heroic quest to a different plane of reality. The Overmind, a tyrant that is part machine, part spirit of evil, cleverly overthrew the great king, who escaped and planned revenge that has taken 1,000 years to fulfill. Now, YOU must travel to the Empire of the Overmind and destroy the abomination. Includes deluxe copy of Rhyme of the Overmind.

12+, CAS, NONE, 40K, NONE, NO, \$30.00

Avalon Hill Microcomputer Games, Inc.

## MOONPROBE

12+, DIS, NONE, 24K, JC, NO, \$10.95

Dynacomp, Inc.

## DARTS & TILT

**Darts**—Enter the pub, grab a pint of lager and a handful of darts, then try for a bull's eye in this amazing graphic game. One or two players can go at it, testing their aim at ten skill levels. Whether you want to throw a few, or just show your friends what the ATARI Home Computer can do, Darts is an ideal addition to your software library. This is Britain's most popular ATARI Home Computer game from Thorn/EMI.

**Tilt**—One or two players attempt to navigate balls through a maze and into scoring holes. With nine skill levels and nine speeds, **Tilt** will provide hours of fun. And, since each player can use a different skill level **Tilt** is ideal for family play. From Thorn/EMI. Order disk CS-7506. Available North America only.

5+, DIS, NONE, 16K, JC, NO, \$19.95

Creative Computing

## POOL

Put a games room in your computer. Old pros and beginners alike will thrill to the challenge and realism of **Pool**. From the satisfying click of a tough combination shot to the accuracy required for a three-cushion bank, **Pool** has it all. You control the angle and force of your stroke, then watch the object ball speed toward the pocket. It's so real you can almost feel the felt.

There is a practice mode for one player, and 8-Ball and Tournament Pool for two. Take a break with **Pool** today. From Thorn/EMI. Order cassette CS-7010. Available North America only.

12+, CAS, NONE, 16K, JC, NO, \$19.95

Creative Computing

## POKER PARTY

9+, CAS, NONE, 24K, NONE, NO, \$17.95  
9+, DIS, NONE, 32K, NONE, NO, \$17.95

Dynacomp, Inc.

## FLIGHT SIMULATOR

12+, CAS, NONE, 24K, NONE, NO, \$17.95  
12+, DIS, NONE, 32K, NONE, NO, \$17.95

Dynacomp, Inc.



## CHENNAULT'S FLYING TIGERS

WWII Air Battle Game with REAL-TIME ANIMATED-ACTION GRAPHICS (32K RAM required—can be played without graphics in 16K). Over 30 different Japanese and Allied aircraft—hundreds of combinations. Several levels of difficulty.

12+, CAS, NONE, 16K, JC, NO, \$16.95

Discovery Games

## TEACHERS PET I

8+, CAS, NONE, 24K, NONE, NO, \$19.95  
8+, DIS, NONE, 24K, NONE, NO, \$19.95

Dynacomp, Inc.

## CHOMP-OTHELLO

ALL, CAS, NONE, 16K, NONE, NO, \$11.95  
ALL, DIS, NONE, 16K, NONE, NO, \$11.95

Dynacomp, Inc.

## RAF: BATTLE OF BRITAIN

12+, CAS, NONE, 16K, NONE, NO, \$19.95

Discovery Games

## GAMES CONTINUED

Slaving too long over a hot computer? Then take a fun break with these 6 great EPYX games.



### THE DATESTONES OF RYN

An introduction to the EPYX DUNJONQUEST system. Your goal is to recover stolen gems from Rex the Reaver before he slips away. You've only got 20 minutes! Fight or flee, parry or thrust. The choice is always yours. Built-in scoring measures how well you do in successive playings and tests your prowess against that of your friends.

10+, CAS, ATARI BASIC, 32K, NONE, NO, \$19.95  
10+, DIS, ATARI BASIC, 32K, NONE, NO, \$19.95

**Automated Simulations, Inc.**

### RESCUE AT RIGEL

You are Sudden Smith. Your mission is to rescue 10 humans held on an alien moonbase. The base is a complex maze of corridors, grave-shafts and teleports. Armed with powergun and blaster, you have 60 minutes to battle the aliens, rescue the prisoners and, somehow, get yourself out alive. This EPYX game includes 16 real time play options, 3 skill levels, superb graphics and infinite variation.

10+, CAS, ATARI BASIC, 16K, NONE, NO, \$29.95  
10+, DIS, ATARI BASIC, 16K, NONE, NO, \$29.95

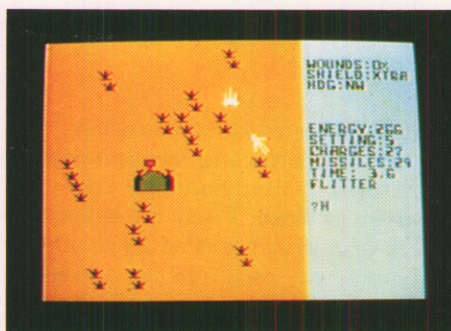
**Automated Simulations, Inc.**

## TEMPLE OF APSHAI, DUJONQUEST

The computer game of the year for 1980, winner of the Charles Roberts award for excellence in game design. Enter a universe where the strength of your sword arm saves you from the death grip of a giant mantis. In over 200 rooms, over 30 kinds of monsters are ready to do you in, in real time, and guard the 70 or so treasures. You'll spend weeks, months . . . the rest of your life . . . striking at the forces of evil. Always demonstrating your strength, dexterity, intelligence . . . Your alter ego goes forth into a graphically displayed world of demons and darkness. Includes illustrated 56-page Book of Lore, summary card, and game program.

10+, CAS, ATARI BASIC, 32K, NONE, NO, \$39.95  
10+, DIS, ATARI BASIC, 32K, NONE, NO, \$39.95

**Automated Simulations, Inc.**



### STAR WARRIOR

You are a Fury . . . and retribution is your business. The Stellar Union has instituted a soul-crushing dictatorship. Your mission is to assassinate the military governor and destroy his base. You want to do as much damage as possible. In this EPYX game there are 2 scenarios, 5 skill levels, 20 play options, your choice of suits and equipment and superb graphics. The terrain is dangerous and difficult; the enemy forces powerful and varied—sometimes even invisible.

10+, CAS, ATARI BASIC, 32K, NONE, NO, \$39.95  
10+, DIS, ATARI BASIC, 32K, NONE, NO, \$39.95

**Automated Simulations, Inc.**



### CRUSH, CRUMBLE & CHOMP!

First there were monster movies. Now there is Crush, Crumble & Chomp! The great EPYX movie monster computer game. And guess who stars as the movie monster? You! Be a scaly amphibian or a giant winged creature. But as in all monster movies, you're up against everything the human race can throw at you. Over 100 scenarios, 6 stupendous monsters, each with its own monstrous summary card, 4 cities displayed in graphic detail and spine-tingling, edge-of-your-seat excitement.

10+, CAS, ATARI BASIC, 32K, NONE, NO, \$29.95  
10+, DIS, ATARI BASIC, 32K, NONE, NO, \$29.95

**Automated Simulations, Inc.**

### INVASION ORION

You are Fleet Admiral. Stop the alien Klaatu forces. Command up to 9 starships against your computer or a human opponent. Tractor beams, shields, destructor beams, missiles, torpedoes, 30 different kinds of ships, each with a different mix of weapons and capabilities, 3 skill levels and 10 scenarios. A second program (included) lets you create your own scenarios. A game that's infinitely expandable, yet so easy to learn. No complex rules to remember. Just concentrate on your strategy for victory.

12+, CAS, ATARI BASIC, 32K, NONE, NO, \$24.95  
12+, DIS, ATARI BASIC, 32K, NONE, NO, \$24.95

**Automated Simulations, Inc.**

## HAUNTED HOUSE

You are trapped in a mansion, alone except for the spirits that haunt the place eternally. Can you find the exit before midnight? This ever-changing game, complete with sound effects, is a perfect companion for dark evenings and rainy days. Order cassette CS-7003.

8+, CAS, ATARI BASIC, 32K, NONE, NO, \$11.95

**Creative Computing**

## HELICOPTER BATTLE

ALL, CAS, NONE, 16K, NONE, NO, \$9.95  
ALL, DIS, NONE, 16K, NONE, NO, \$14.95

**C E Software**

## TAG

ALL, CAS, NONE, 16K, NONE, NO, \$9.95  
ALL, DIS, NONE, 16K, NONE, NO, \$14.95

**C E Software**

## TRACTOR BEAM

ALL, CAS, NONE, 8K, NONE, NO, \$9.95  
ALL, DIS, NONE, 8K, NONE, NO, \$14.95

**C E Software**

## MUSICGAME

ALL, CAS, MUSIC, 16K, NONE, NO, \$9.95  
ALL, DIS, MUSIC, 16K, NONE, NO, \$14.95

**C E Software**

## OUTDOOR GAMES

Fight a raging inferno in Forest Fire. User options allow for endless variety and skill levels. When the fire is out, relax with Fishing Trip, but watch out for sharks. The brave may wish to trek through the wilderness in Treasure Island I and II. Beware the sentinels—they're after you. Order cassette CS-7002.

8+, CAS, ATARI BASIC, 32K, NONE, NO, \$11.95

**Creative Computing**

## ZOGAR

ALL, DIS, NONE, 16K, NONE, NO, \$12.95

**Avatar Software**

## MIGS & MESSERSCHMITTS

12+, CAS, NONE, 16K, NONE, NO, \$19.95

**Discovery Games**



## SHADOW HAWK I

SHADOW HAWK I is a new home computer game designed by Jim Landes, founder of HORIZON SIMULATIONS, and his ace team.

SHADOW HAWK I uses high-resolution, three-dimension, three-axis rotation and color graphics. Quality, clarity, and variability of the picture are unsurpassed. On longwear Dyan\* diskettes.

SHADOW HAWK I plays on ATARI 800 Home Computer with ATARI 810™ Disk Drive and joystick controllers.

Every play is a fresh challenge: Infinite random positioning of targets precludes anticipating enemy attack through repetitive playing. The 3-D, three-axis rotation adds to the challenge . . .

The game: You command SHADOW HAWK I, sole surviving combat ship of the Free Confederation, with which you hope to over-

come the Galactic Empire's dictatorship of the solar system. Your base is on a remote planet at the system's outer limit. From it, you prey on the Empire's four classes of merchant ships (one of which fights back!) to gain armor and weaponry for strengthening SHADOW HAWK I.

The Empire meanwhile is probing the solar system for you with five classes of warships. You must avoid them **and** deadly satellites scattered throughout the system.

Since winning is all but impossible, your success is measured at game's end by nine skill ranks, the highest of which is Star Lord.

Game time: 15-30 minutes, depending on player's thinking and dexterity. VISA, MasterCard Welcome.

14+, DIS, NONE 48K, JC, NO, \$49.95

**Horizon Simulations**

\*Indicates trademark of Dyan Corp.

## POOL, SNOOKER & BILLIARDS

**Pool**—Put a games room in your computer. Old pros and beginners alike will thrill to the challenge and realism of Pool. From the satisfying click of a tough combination shot to the accuracy required for a three-cushion bank, Pool has it all. You control the angle and force of your stroke, then watch the object ball speed toward the pocket. It's so real you can almost feel the felt.

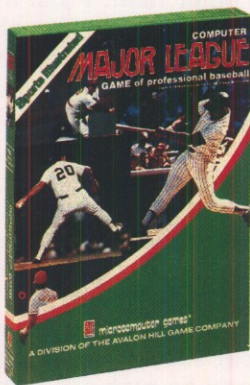
There is a practice mode for one player, and 8-Ball and Tournament Pool for Two. Take a break with Pool today. From Thorn/EMI.

**Snooker**—A tough British game using 26 balls requiring the eye of a sharpshooter and the strategy of a chess master.

**Billiards**—This captivating British game is played with three balls on a standard pool table. Each player attempts to score by sinking a shot or hitting two balls with his cueball. From Thorn/EMI. Order disk CS-7509. Available North America only.

8+, DIS, NONE, 16K, JC, NO, \$24.95

**Creative Computing**



## MAJOR LEAGUE BASEBALL

Recreate an entire baseball season, championship or world series with real life player statistics. Avalon Hill has analyzed full season statistics for each player, converting it to computer memory so each performs in your game just as he does in reality. YOUR ability at managing could make an also-ran become a pennant winner.

9+, DIS, ATARI BASIC, 40K, NONE, NO, \$30.00

**Avalon Hill Microcomputer Games, Inc.**

## ASTRO QUOTES

Fascinating game in which you guess vocabulary words from clues and the computer takes each letter from the words and puts it where it belongs in a famous quotation. As soon as you can, you guess the quotation. Three versions: easy, medium, hard.

14+, CAS, ATARI BASIC, 16K, NONE, NO, \$16.95

**Program Design, Inc.**

## SURVIVAL ADVENTURE

CHILD+, CAS, ATARI BASIC, 40K, NONE, NO, \$24.95  
CHILD+, DIS, ATARI BASIC, 40K, NONE, NO, \$24.95

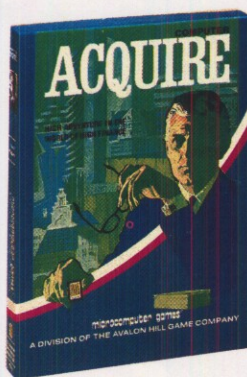
**United Software of America**

## SPACE ADVENTURE PAK

Arcade game package that includes SPACE WARS — A high speed space battle between you and your ATARI Computer, and SHOOTOUT — Where you and your opponent fight it out with blast cannons. Uses player/missile graphics & sound.

10+, CAS, ATARI BASIC, 16K, JC, NO, \$12.95  
10+, DIS, ATARI BASIC, 24K, JC, NO, \$15.95

**Kinetic Designs**



## COMPUTER ACQUIRE

The object of the game is to become the wealthiest person in this "business" game about hotel acquisitions and mergers. For 2 to 6 players it is a subtle game of inter-player strategy. As a SOLITAIRE game you play against the computer. One can even pit the computer against itself in this faithful recreation of the classic board game.

12+, CAS, NONE, 32K, NONE, NO, \$20.00

**Avalon Hill Microcomputer Games, Inc.**

## KROSS 'N QUOTES

Quotation guessing game in which the player works against a clock. Player fills in the quote by picking scrambled letters and putting them in place using the joystick.

ADULT, CAS, ATARI BASIC, 16K, JC, NO, \$16.95

**Program Design, Inc.**



## SAMMY THE SEA SERPENT

A REVOLUTIONARY CONCEPT IN SOFTWARE FOR THE ATARI 400™ AND 800™ HOME COMPUTERS.

**Sammy The Sea Serpent**—A Storybook Program for Children Ages 4 to 7.

**Sammy The Sea Serpent** is the story of an imaginary sea creature who is lost and trying to find his way home. The story is read aloud to your child by a professional actress. While the tape is being told, the child uses the joystick to help Sammy out of some tight spots.

The A side of the cassette contains the interactive story; the B side contains games that the child plays with Sammy.

The program uses voice, sound effects, music, color and mixed graphics.

**Sammy The Sea Serpent** can be used with either the ATARI 400 or 800 Home Computer. It is available in cassette format only.

Also available at fine computer stores.

4+, CAS, ATARI BASIC, 16K, JC, NO, \$16.95

**Program Design, Inc.**

## SEA BATTLE

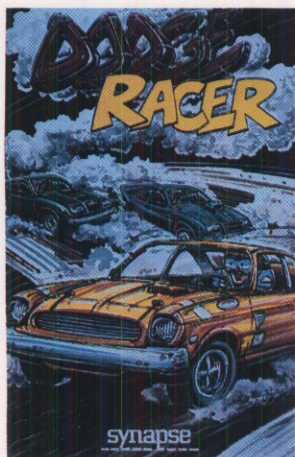
ALL, CAS, ATARI BASIC, 16K, JC, NO, \$14.95  
ALL, DIS, ATARI BASIC, 16K, JC, NO, \$18.95

**Zapata Microsystems**

## FIVE-OF-A-KIND

ALL, CAS, ATARI BASIC, 24K, JC, NO, \$14.95  
ALL, DIS, ATARI BASIC, 24K, JC, NO, \$18.95

**Zapata Microsystems**



## DODGE-RACER\*

This arcade game lets you drive your car through a maze avoiding the computer foe out to get you. The better you get the faster the action . . . And when you're ready, challenge two cars at the same time! There are 12 game options for up to 4 players in this real-time game of skill and reflex. DODGE RACER sets the standard for ATARI Home Computer games!

7+, CAS, ATARI BASIC, 16K, JC, NO, \$22.50  
7+, DIS, ATARI BASIC, 24K, JC, NO, \$24.50

**Synapse Software**

\*Indicates trademark of Synapse Software.

## ADVENTURE ON A BOAT

10+, CAS, ATARI BASIC, 32K, JC, NO, \$19.95  
10+, DIS, ATARI BASIC, 32K, JC, NO, \$24.95

**Sublogic**

## BOWLING

This arcade game requires judgment and risk taking. Up to four players bowl a line of ten pins using the joystick. Hit the pocket and it's a strike—too high or too low and it could be a split. Three levels of difficulty. The computer graphically scores the games.

9+, CAS, ATARI BASIC, 16K, JC, NO, \$16.95

**Program Design, Inc.**

## CAPTIVITY

Guide a robot through and out of a maze as quickly as possible, with only the aid of the robot's-eye, 3-D view on the screen in front of you. You can consult a map or the robot's compass, but it will cost you points and time. One of the most advanced maze games available to the ATARI Home Computer owner, featuring machine-language routines; 5-color, high-resolution graphics; sound effects; an infinite variety of mazes; and 20 game variations. CAP-AT-C

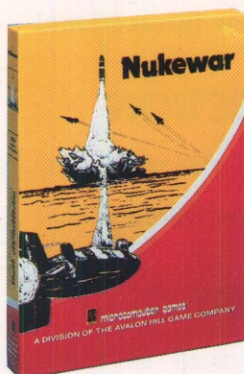
12+, CAS, ATARI BASIC, 24K, JC, NO, \$24.95

**Program Design, Inc.**

## ARTILLERY

ALL, CAS, ATARI BASIC, 16K, JC, NO, \$14.00

**Mosaic Electronics**



## NUKEWAR

Nuclear confrontation between two hypothetical countries. Defend your country by massive espionage efforts, or by building jet fighter bombers, missiles, submarines and anti-ballistic missiles. Your cold and calculating computer will choose its own strategy! Very fast paced for players of all ages and levels of experience.

8+, CAS, ATARI BASIC, 16K, NONE, NO, \$15.00  
8+, DIS, ATARI BASIC, 24K, NONE, NO, \$20.00

**Avalon Hill Microcomputer Games, Inc.**

## WORLD SERIES BASEBALL

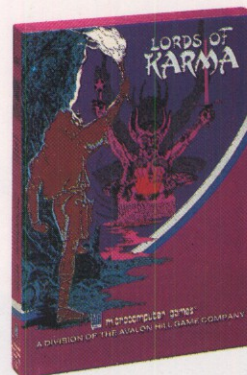
ALL, CAS, NONE, 16K, NONE, NO, \$9.95

**Softside Publications**

## MASTERS GOLF

ALL, CAS, NONE, 16K, NONE, NO, \$9.95

**Softside Publications**



## LORDS OF KARMA

Like an intriguing puzzle! The fun is in deciphering secrets while exploring a mythical, magical city and countryside, while at the same time avoiding lurking monsters. You tell the computer what you want by typing simple sentences. The computer has many surprises in store.

9+, CAS, NONE, 40K, NONE, NO, \$20.00

**Avalon Hill Microcomputer Games, Inc.**

## WARLOCKS REVENGE

One of the first high-res adventure games for the ATARI 400/800 Home Computers with one disk drive. Determine your character and skill. Explore castles and caverns looking for treasure while avoiding the Torkies.

12+, DIS, ATARI BASIC, 48K, NONE, NO, \$35.00

**Synergistic Software**

## GAMES CONTINUED

### AVOID

ALL, CAS, ATARI BASIC, 16K, JC, NO, \$20.00

Computer Magic Ltd.

### TRIBOMB

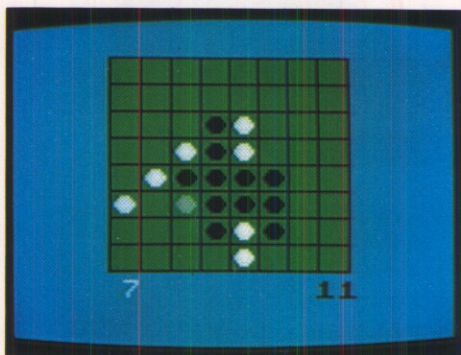
ALL, CAS, ATARI BASIC, 16K, PC, NO, \$20.00  
ALL, DIS, ATARI BASIC, 16K, PC, NO, \$20.00

Computer Magic Ltd.

### KAYOS

ALL, CAS, NONE, 8K, JC, NO, \$34.95  
ALL, DIS, NONE, 8K, JC, NO, \$34.95

Computer Magic Ltd.



### REVERSI

Reversi is the ancient name for the popular board game Othello. Your ATARI® 400™/800™ Home Computer becomes a formidable opponent as you try to gain control of the playing board.

Don't let the beautiful playing surface fool you. Reversi can get ugly when it has backed you into a corner. A machine language program, Reversi will amaze you with its strategy and speed.

8+, CAS, NONE, 8K, NONE, NO, \$19.95

Artsci, Inc.

### FUN & GAMES

Two volumes both with five games for you to play.

8+, CAS, ATARI BASIC, 32K, NONE, OPT, \$29.95

University Software, Inc.

## TRUCKER & STREETS OF THE CITY

Two prize winning simulations on one disk. In **Trucker** you drive your own rig on a cross-country run. Pick one of three cargoes and three routes, fight fatigue, flat tires, speed traps and other hazards. Do well and the bank won't repossess your rig.

**Streets of The City** is an accurate simulation of the complex job faced by a Commissioner of Transportation. Can you improve on-time performance, replacing an aging bus fleet, repair streets and build a new Interstate within your budget?

Disk CS-7707.

12+, DIS, NONE, 40K, NONE, NO, \$24.95

Creative Computing

### ANGLE WORM

8, CAS, NONE, 8K, JC, NO, \$14.95

Adventure International

### DEFLECTION

8+, CAS, NONE, 8K, NONE, NO, \$14.95

Adventure International

### SUNDAY GOLF

ALL, CAS, NONE, 16K, NONE, NO, \$14.95

Adventure International

### ADVENTURE SERIES

12+, CAS, NONE, 24K, NONE, NO, \$19.95

Adventure International

### MOUNTAIN SHOOT

10+, CAS, NONE, 16K, NONE, NO, \$14.95

Adventure International

### GALACTIC TRADER

14+, CAS, NONE, 32K, NONE, NO, \$19.95

Adventure International



## POKER SOLITAIRE

Poker Solitaire is an intriguing variation of the popular card games, Solitaire and Poker. You will draw 25 cards, one at a time, and you must position each card within a five by five array to create the best possible poker hands.

Poker Solitaire is written in Basic for fine graphics and excellent sound effects.

12+, CAS, NONE, 8K, NONE, NO, \$14.95

Artsci, Inc.

### BLACKJACK

ADULT, DIS, NONE, 16K, JC, NONE, \$12.00

H.E.L. Laboratories, Inc.

### SHOOTING GALLERY

10+, CAS, ATARI BASIC, 16K, JC, NO, \$19.00  
10+, DIS, ATARI BASIC, 32K, JC, NO, \$19.00

Analog Software

### RACE-IN-SPACE

10+, CAS, NONE, 16K, JC, NONE, NO, \$16.95  
10+, DIS, NONE, 16K, JC, NONE, NO, \$16.95

Analog Software

### MOVIE THEME

12+, CAS, MUSIC, 8K, NONE, NO, \$12.00

Analog Software

### THUNDER ISLAND

12+, CAS, ATARI BASIC, 16K, JC, NO, \$15.00

Analog Software

CODE: Age range; CAS(ette), DIS(kette), ROM (cartridge); Additional cartridge required [ATARI BASIC, MUSIC (Composer), NONE]; RAM memory required; Controllers required [JC (joystick controllers), PC (paddle controllers), NONE or OTHER]; Printer [REQ(uired), OPT(ional), NO]; Price

## TRIPLE BLOCKADE

8+, CAS, NONE, 16K, JC, NO, \$14.95  
8+, DIS, NONE, 16K, JC, NO, \$14.95

Dynacomp, Inc.

## GAMES PACK II

8+, CAS, NONE, 24K, NONE, NO, \$10.95

Dynacomp, Inc.

## STUD POKER

9+, CAS, NONE, 24K, NONE, NO, \$11.95  
J+, DIS, NONE, 32K, NONE, NO, \$11.95

Dynacomp, Inc.

## BACKGAMMON

12+, CAS, NONE, 24K, NONE, NO, \$14.95  
12+, DIS, NONE, 32K, NONE, NO, \$14.95

Dynacomp, Inc.

## LUNAR LANDER

ALL, CAS, NONE, 24K, JC, NO, \$14.95

Adventure International

## GALACTIC EMPIRE

14+, CAS, NONE, 32K, NONE, NO, \$19.95

Adventure International

## STAR TREK 3.5

10+, CAS, NONE, 32K, NONE, NO, \$19.95

Adventure International

## HARMONIC

ADULT, CAS, NONE, 24K, NONE, NO, \$24.95  
ADULT, DIS, NONE, 32K, NONE, NO, \$24.95

Dynacomp, Inc.

## NOMINOS JIG PUZZLE

8+, CAS, NONE, 24K, NONE, NO, \$16.95  
8+, DIS, NONE, 24K, NONE, NO, \$16.95

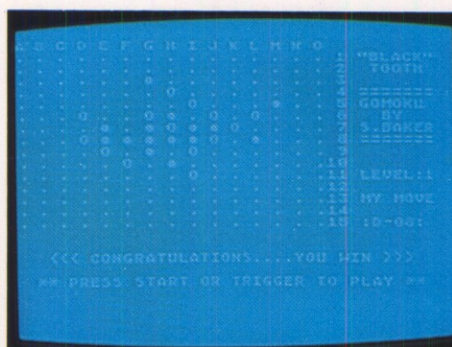
Dynacomp, Inc.

## ORIGINAL ADVENTURE

Only the brave enter the Colossal Cave, and only the clever survive. The entire evil cast of this classic game, from deadly dragon to nasty dwarf, will try to stop your quest for treasures. Using English commands, you explore the cave, travel through more than 100 locations, gather treasures, and attempt to think your way out of dangerous situations. Every aspect of the game is faithfully reproduced from the Original Adventure born on large computer systems. For weary travelers, there is even a SAVE GAME feature. Add this classic to your software collection. Order CS-7504 for disk, CS-7009 for cassette.

12+, CAS, ATARI BASIC, 32K, NONE, NO, \$19.95  
12+, DIS, ATARI BASIC, 32K, NONE, NO, \$24.95

Creative Computing



## GOMOKU

Gomoku is an oriental game played by children of all ages in the Orient. You will be amazed at the offensive and defensive strategy involved. To win you must place five of your pieces in a row on alternate turns while preventing your semiconductor opponent from winning.

Gomoku has three levels of play to give you years of strategic challenge. Gomoku is written in machine language to give you a fast game and a beautiful playing board.

10+, CAS, NONE, 8K, NONE, NO, \$19.95

Artsci, Inc.

## THE MAD MARBLE

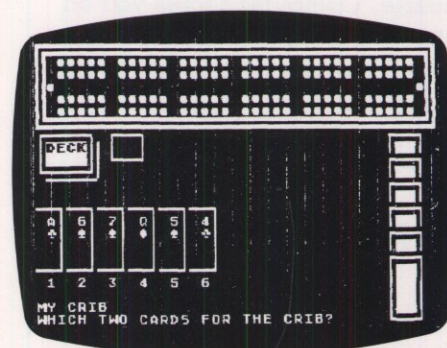
ALL, CAS, NONE, 8K, NONE, NO, \$9.95  
ALL, DIS, NONE, 8K, NONE, NO, \$14.95

C E Software

## WAR AT SEA

ALL, CAS, NONE, 16K, NONE, NO, \$14.95  
ALL, DIS, NONE, 16K, NONE, NO, \$19.95

C E Software



## CRIBBAGE

Can you be the first to peg twice around the board? Your computer will put up a tough fight in this head-to-head game of cribbage. A graphic display of board and cards highlight this game of skill. From Thorn/EMI. Order cassette. CS-7008. Available North America only.

12+, CAS, ATARI BASIC, 16K, NONE, NO, \$11.95

Creative Computing

## SAFARI

ALL, CAS, NONE, 16K, NONE, NO, \$29.95

CDS Corporation

## JAGDSTAFFEL

12+, CAS, NONE, 16K, NONE, NO, \$19.95

Discovery Games

## WINGED SAMURAI

12+, CAS, NONE, 16K, NONE, NO, \$19.95

Discovery Games

## WORD SEARCH/ GEOGRAPHY

Search for hidden geographical place names in a pattern of letters generated by the computer. Words can be hidden across, down, or diagonally as in the popular word-search puzzles. Hundreds of different puzzles can be formed by the puzzle. Computer scores you on how well you do.

12+, CAS, ATARI BASIC, 16K, IC, NO, \$16.95

**Program Design, Inc.**

## S811 HANGWORD

6-12, CAS, ATARI BASIC, 8K, IC, NO, \$10.00

**Mosaic Electronics**

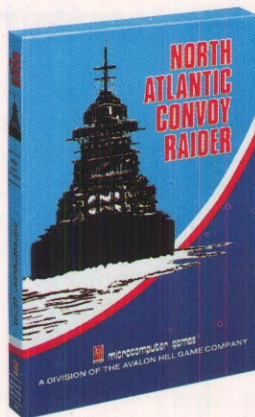


## STOCKS AND BONDS

Here's your chance to be a Wall Street genius. Players choose a general strategy and invest in the stocks that fit their game-plan. Play it safe, gamble or do a little of both. In a "bear" market players investing heavily could lose their shirts, while a "bull" market would cause them to make great gains. The winner makes the most money through game transactions.

9+, CAS, ATARI BASIC, 32K, IC, NO, \$20.00  
9+, DIS, ATARI BASIC, 40K, IC, NO, \$25.00

**Avalon Hill Microcomputer Games, Inc.**



## NORTH ATLANTIC CONVOY RAIDER

In the Bismarck convoy raid of 1941, the computer controls the British convoys and battleships. Will the Bismarck sink the Hood, only to be sunk by the Rodney and King George V, as in history? Or, will the Bismarck cripple or sink the British Home Fleet and go ram-paging through the convoy lanes?

8+, CAS, ATARI BASIC, 16K, NONE, NO, \$15.00  
8+, DIS, ATARI BASIC, 24K, NONE, NO, \$20.00

**Avalon Hill Microcomputer Games, Inc.**

## WORD SEARCH/ SPANISH

As in Word Search: Geography, the computer generates hundreds of different puzzles, but this time the hidden words are common Spanish words. Helps improve Spanish vocabulary. Computer scores you. Two programs.

14+, CAS, ATARI BASIC, 16K, IC, NO, \$16.95

**Program Design, Inc.**

## WORD SEARCH/ FRENCH

Like Word Search: Spanish.

14+, CAS, ATARI BASIC, 16K, IC, NO, \$16.95

**Program Design, Inc.**

## HORSEWORD DERBY

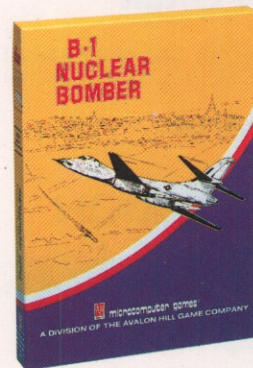
ALL, CAS, ATARI BASIC, 16K, NONE, NO, \$20.00

**Computer Magic Ltd.**

## MINDBOGGLERS-1

ALL, CAS, NONE, 16K, NONE, NO, \$15.95  
ALL, DIS, NONE, 24K, NONE, NO, \$15.95

**Versa Computing, Inc.**



## B-1 NUCLEAR BOMBER

You are the pilot of a B-1 bomber on a mission over the Soviet Union. You must fly through stiff Russian defenses to the target city, bomb it and return home. Your computer controls the Soviet MIG fighters and surface-to-air missiles. You must rely on your electronic counter measures and self-defense missiles.

8+, CAS, ATARI BASIC, 24K, NONE, NO, \$15.00  
8+, DIS, ATARI BASIC, 32K, NONE, NO, \$15.00

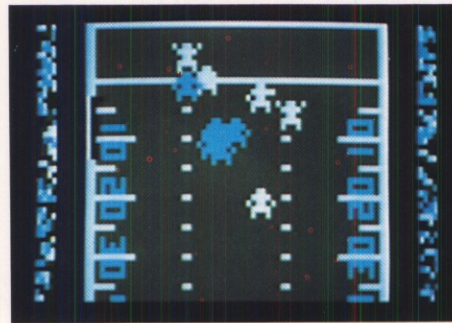
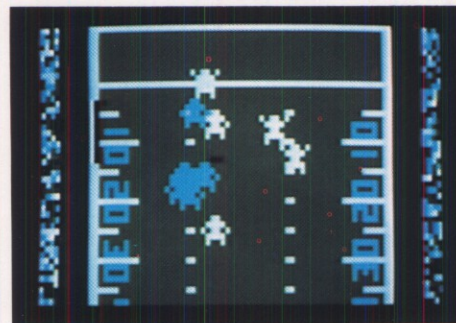
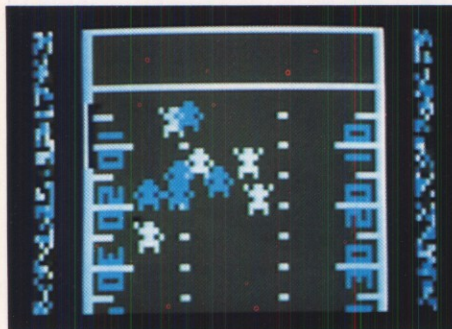
**Avalon Hill Microcomputer Games, Inc.**

## MINICROSSWORD

Crossword programs invent their own crossword puzzles—hundreds of different puzzles are possible—and score how well you do each puzzle. The course provides a vocabulary and spelling development system. Two programs.

10+, CAS, ATARI BASIC, 24K, NONE, NO, \$16.95

**Program Design, Inc.**



## CYPHER BOWL

Cypher Bowl is an exciting two player football game. It's exciting because it's colorful, fast, and challenging. Imagine, you and a friend can battle it out on the gridiron like the pros. Fortunately you're always ready for another game. There are no shoulder separations or knee injuries to keep you off the field.

You get 256 combinations of Offense and Defense for a wide variety of plays from scrimmage. Offensively, you can run off tackle past the defensive line or sweep around the end. Pick apart the coverage with a short pass or two, or go for it all with the bomb.

As Defensive Monster Man you will call your pass rush and coverage in the huddle. You can blitz, contain, cover the short pass, and call up your prevent defense to prevent that critical score. If your team is hot, you might get that game winning interception.

The kicking game adds another dimension to Cypher Bowl. You can punt and kick field goals as you strategically see fit. Kick returns can be made on punts or short field goals, so you better get your special team working smoothly.

Cypher Bowl is easy to learn yet will always be a challenge to play. Play sheets are provided to assist you in choosing and executing your plays.

12+, CAS, NONE, 16K, JC, NO, \$49.95  
12+, DIS, NONE, 16K, JC, NO, \$49.95

Artsci, Inc.

## GHOSTLY MANOR

10+, CAS, ATARI BASIC, 32K, JC, NO, \$19.95  
10+, DIS, ATARI BASIC, 32K, JC, NO, \$24.95

Sublogic

## THE BLACK FOREST

10+, DIS, ATARI BASIC, 48K, JC, NO, \$24.95

Sublogic

## IRIDIS #1

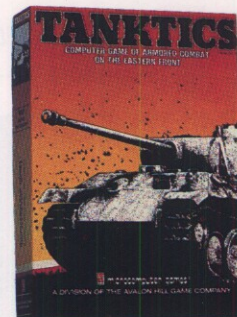
10+, CAS, ATARI BASIC, 16K, JC, NO, \$9.95  
11, DIS, ATARI BASIC, 24K, JC, NO, \$9.95

The Code Works

## IRIDIS #2

10+, CAS, ATARI BASIC, 16K, JC, NO, \$12.95  
11, DIS, ATARI BASIC, 24K, JC, NO, \$12.95

The Code Works



## TANKTICS

Armored combat on the Eastern front of WWII. Includes full-color mounted mapboard and counters. You, as the German tank platoon leader, start the game outnumbered 2 to 1. However, you choose your tank types before each of 5 scenarios. You also specify what your opponent, the computer, is to have before going after or defending the specified objective from the Russians.

12+, CAS, ATARI BASIC, 24K, NONE, NO, \$24.00  
12+, DIS, ATARI BASIC, 32K, NONE, NO, \$29.00

Avalon Hill Microcomputer Games, Inc.

## BLOCKADE

ALL, CAS, ATARI BASIC, 8K, JC, NO, \$14.95  
ALL, DIS, ATARI BASIC, 8K, JC, NO, \$18.95

Zapata Microsystems

## PURSUIT

ALL, DIS, ATARI BASIC, 24K, JC, NO, \$18.95

Zapata Microsystems

## SUPER LA MANS

ALL, CAS, ATARI BASIC, JC, NO, \$14.95  
ALL, DIS, ATARI BASIC, JC, NO, \$19.95

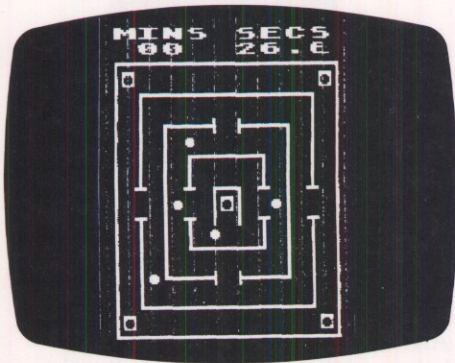
Zapata Microsystems

## ROAD RACE

ALL, DIS, NONE, 24K, NONE, NO, \$14.95

Zapata Microsystems

## GAMES CONTINUED



### TILT

A favorite craze for years, the familiar wood labyrinth that tilts in all directions has entered the computer age. One or two players attempt to navigate balls through a maze and into scoring holes. With nine skill levels and nine speeds, **Tilt** will provide hours of fun. And, since each player can use a different skill level, **Tilt** is ideal for family play. From Thorn/EMI. Order cassette CS-7013. Available North America only.

5+, CAS, NONE, 16K, JC, NO, \$11.95

**Creative Computing**

### RICOCHET

7+, CAS, ATARI BASIC, 16K, NONE, NO, \$19.95

**Automated Simulations**

### CRYSTALS

8+, CAS, NONE, 24K, NONE, NO, \$9.95  
8+, DIS, NONE, 24K, NONE, NO, \$9.95

**Dynacomp, Inc.**

### HEARTS 1.5

9+, CAS, NONE, 24K, NONE, NO, \$15.95  
9+, DIS, NONE, 32K, NONE, NO, \$15.95

**Dynacomp, Inc.**

### BRIDGE 2.0

16+, CAS, NONE, 24K, NONE, NO, \$17.95  
16+, DIS, NONE, 32K, NONE, NO, \$17.95

**Dynacomp, Inc.**

## HORSE RACING

ALL, CAS, NONE, 16K, NONE, NO, \$9.95  
ALL, DIS, NONE, 16K, NONE, NO, \$14.95

**C E Software**

### KENO

ALL, CAS, NONE, 8K, NONE, NO, \$9.95  
ALL, DIS, NONE, 8K, NONE, NO, \$14.95

**C E Software**

## LIGHT/BOLTS & REACT

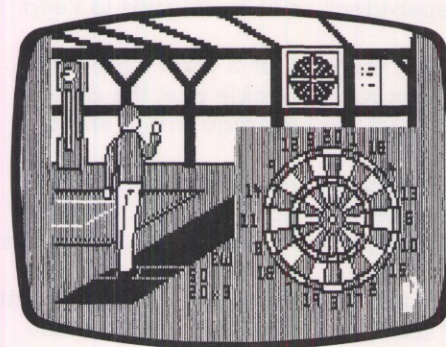
ALL, CAS, NONE, 16K, NONE, NO, \$9.95  
ALL, DIS, NONE, 16K, NONE, NO, \$14.95

**C E Software**

## SUPERMASTER

ALL, CAS, NONE, 8K, NONE, NO, \$9.95  
ALL, DIS, NONE, 8K, NONE, NO, \$14.95

**C E Software**



### DARTS

Enter the pub, grab a pint of lager and a handful of darts, then try for a bull's eye in this amazing graphic game. One or two players can go at it, testing their aim at ten skill levels. Whether you want to throw a few, or just show your friends what the ATARI Home Computer can do, Darts is an ideal addition to your software library. This is Britain's most popular ATARI Home Computer game from Thorn/EMI. Order cassette CS-7011. Available North America only.

8+, CAS, NONE, 16K, JC, NO, \$14.95

**Creative Computing**

## DOMINOES & CRIBBAGE

**Dominoes** — Take on your computer at a game of draw dominoes. With options for repeating or alternating draw, **Dominoes** gives the game player a tough opponent who's always ready.

**Cribbage** — Can you be the first to peg twice around the board? Your computer will put up a tough fight in this head-to-head game of cribbage. A graphic display of board and cards highlight this game of skill. From Thorn/EMI. Order disk CS-7506. Available North America only.

8+, DIS, ATARI BASIC, 16K, NONE, NO, \$19.95

**Creative Computing**

## GIANT SLALOM

12+, DIS, NONE, 16K, JC, NO, \$14.95  
12+, CAS, NONE, 16K, JC, NO, \$14.95

**Dynacomp, Inc.**

## MONARCH

12+, DIS, NONE, 16K, JC, NO, \$14.95  
12+, CAS, NONE, 16K, JC, NO, \$14.95

**Dynacomp, Inc.**

## GAMES PACK I

12+, DIS, NONE, 16K, JC, NO, \$10.95  
12+, CAS, NONE, 16K, JC, NO, \$10.95

**Dynacomp, Inc.**

## BILLIARDS

This captivating British game is played with three balls on a standard pool table. Each player attempts to score by sinking a shot or hitting two balls with his cueball. From Thorn/EMI. Order cassette CS-7012. Available North America only.

12+, CAS, NONE, 16K, NONE, NO, \$14.95

**Creative Computing**

## VALDEZ

12+, CAS, NONE, 24K, NONE, NO, \$15.95  
12+, DIS, NONE, 24K, NONE, NO, \$15.95

Dynacomp, Inc.

## INTRUDER ALERT

ALL, CAS, NONE, 16K, NONE, NO, \$16.95

Dynacomp, Inc.

## SPACE TILT

8+, CAS, NONE, 16K, JC, NO, \$10.95  
8+, DIS, NONE, 16K, JC, NO, \$10.95

Dynacomp, Inc.

## ALPHA FIGHTER

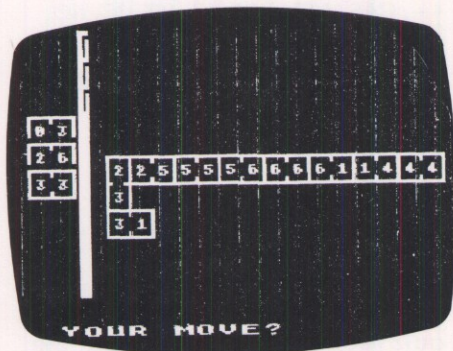
8+, CAS, NONE, 16K, JC, NO, \$14.95  
8+, DIS, NONE, 16K, JC, NO, \$14.95

Dynacomp, Inc.

## STARTREK

12+, CAS, NONE, 24K, NONE, NO, \$11.95  
12+, DIS, NONE, 32K, NONE, NO, \$11.95

Dynacomp, Inc.



## DOMINOES

Take on your computer at a game of draw dominoes. With options for repeating or alternating draw, **Dominoes** gives the game player a tough opponent who's always ready. From Thorn/EMI. Order cassette CS-7007. Available North America only.

8+, CAS, ATARI BASIC, 16K, NONE, NO, \$11.95

Creative Computing

## TIME TRAVELER

9+, CAS/DIS, ATARI BASIC, 16K, NONE, NO, \$24.95

Krell Software

## THE SWORD OF ZEDEK

9+, CAS/DIS, ATARI BASIC, 16K, NONE, NO, \$24.95

Krell Software

## SUPERSTAR BASEBALL AND ALL TIME SUPERSTAR BASEBALL

Two programs in one package.  
9+, CAS/DIS, ATARI BASIC, 16K, NONE, NO, \$24.95

Krell Software

## ODYSSEY IN TIME

9+, CAS/DIS, ATARI BASIC, 32K, NONE, NO, \$39.95

Krell Software

## EDUCATION

### COLLEGE BOARD SAT PREPARATION SERIES

(25 Programs)  
15+, CAS/DIS, ATARI BASIC, 16K, NONE, NO, \$222.95

Krell Software

### PYTHAGORAS AND THE DRAGON

8+, CAS/DIS, ATARI BASIC, 32K, NONE, NO, \$39.95

Krell Software

### EDUCATION & SCIENTIFIC

Seven programs for educational and scientific applications.

8+, CAS, ATARI BASIC, 32K, NONE, OPT, \$29.95

University Software, Inc.

### CATAPULT

ADULT, CAS, ATARI BASIC, 16K, NONE, NO, \$12.95  
ADULT, DIS, ATARI BASIC, 24K, NONE, NO, \$15.95

A. Douglas Davis

### ALEXANDER THE GREAT

Two Versions  
G3-8, CAS/DIS, ATARI BASIC, 32K, NONE, NO, \$39.95  
G9-COLLEGE, CAS/DIS, ATARI BASIC, 32K, NONE, NO, \$39.95

Krell Software

### THE WAR OF THE SAMURAI

9+, CAS/DIS, ATARI BASIC, 32K, NONE, NO, \$39.95

Krell Software

### PLAYER PIANO

Turn your keyboard into a mini-piano and more. Menu options allow you to create and store songs, modify old songs previously saved to disk or tape, or just play the keyboard for fun.

6+, CAS, ATARI BASIC, 24K, NONE, NO, \$14.95  
6+, DIS, ATARI BASIC, 32K, NONE, NO, \$14.95

Santa Cruz Educational Software

# EDUCATION

## TRICKY TUTORIALS\*

**#1:DISPLAY LISTS**—This program teaches you how to alter the program in the computer that controls the format of the screen. Now, you will be able to mix the various modes on the screen at the same time. Just think how nice your programs could look with a mix of large and small text, and both high and low resolution graphics. This program has many examples and does all of the difficult calculations for you!

**#2:HORIZONTAL/VERTICAL SCROLLING**—The information you put on the screen, either graphics or text, can be moved up, down or sideways. Uses the joystick and includes 18 examples with a machine language subroutine (for smoothness) as a bonus.

**#3:PAGE FLIPPING**—normally you have to redraw the screen every time you change the picture or text. Now you can learn how to have the computer draw the next page you want to see while you are still looking at the previous page, then flip to it instantly. You won't see it being drawn so a complicated picture can seem to just appear.

**#4:BASICS OF ANIMATION**—Shows you how to animate simple shapes using the PRINT and PLOT commands, and also has a nice little PLAYER/MISSILE Graphics demo to learn. This would be an excellent way to start making your programs come alive on the screen.

**#5:PLAYER MISSILE GRAPHICS**—This complex subject is demonstrated by starting with simple examples, and building up to a complete game and also an animated business chart on multiple pages! As always, the computer does most of the calculations. Requires 32K disk or tape. Extensive manual included.

\*Indicates trademark of Santa Cruz Educational Software.

**#6:SOUND**—Teaches from simple notes to complex chords and sound effects. EVERYTHING is demonstrated so that you hear the sound as you see the basic statements on the screen. Also includes several pages of additional facts on generating music on your computer.

ALL, CAS, ATARI BASIC, 16K, JC, NO, \$14.95  
ALL, DIS, ATARI BASIC, 24K, JC, NO, \$29.95

**Santa Cruz Educational Software**

## ADVANCED AIR TRAFFIC CONTROLLER

In this popular, fast-moving simulation you must successfully control the flight paths of 27 aircraft as they take off, land and fly over your airspace. You give the orders to change altitude, turn, maintain a holding pattern, approach and land at two airports. With five different airport configurations and variable skill level, you won't easily tire of this absorbing and instructive simulation. Cassette CS-7004.

12+, CAS, ATARI BASIC, 16K, NONE, NO, \$14.95

**Creative Computing**

## COMPUTER DRILL & INSTRUCTION A

6-8, DIS, NONE, 40K, NONE, NO, \$325.00

**Science Research Assoc.**

## COMPUTER DRILL & INSTRUCTION B

8-10, DIS, NONE, 40K, NONE, NO, \$425.00

**Science Research Assoc.**

## COMPUTER DRILL & INSTRUCTION C

10-12, DIS, NONE, 40K, NONE, NO, \$475.00

**Science Research Assoc.**

## DO IT YOURSELF: SPELLING

Make up your own list of words, then program it into the computer, with your own voice cassette. The possibilities are endless; it's easy to do; and you get full instructions, along with lists of words children should know from first grade on up. DYS-AT-C

12+, CAS, ATARI BASIC, 24K, JC, NO, \$24.95

**Program Design, Inc.**

## ASSOCIATIVE IDEA GENERATOR

8+, CAS, ATARI BASIC, 8K, NONE, NO, \$15.00  
8+, DIS, ATARI BASIC, 8K, NONE, NO, \$15.00

**Johnson Software**

## KIDS' 1

KIDS' -1—A simple game to search for treasure, a program to talk with the computer, and a nice math quiz that allows parents to input their child's difficulty level. Recommended for ages 6 to 12.

4+, CAS, ATARI BASIC, 16K, JC, NO, \$14.95

**Santa Cruz Educational Software**

## KIDS' 2P

KIDS' -2P—A spelling quiz, a "scrabble" type game, and a version of Touch with the computer giving all the directions! Spelling quiz requires parents to input the words. Ages 6 to adult.

4+, DIS, ATARI BASIC, 16K, JC, NO, \$14.95

**Santa Cruz Educational Software**

## WORDMATCH

CHILD, CAS, ATARI BASIC, 16K, NONE, NO, \$12.95  
CHILD, DIS, ATARI BASIC, 24K, NONE, NO, \$15.95

**A. Douglas Davis**

## GEOGRAPHY

ELEM/HIGH, DIS, ATARI BASIC, 8K, NONE, NO, \$10.00

Softswap

## MEET THE ROMANS

ELEM/HIGH, DIS, ATARI BASIC, 8K, NONE, NO, \$10.00

Softswap

## STATES & CAPITALS

6+, DIS, ATARI BASIC, 8K, NONE, NO, \$10.00

Softswap

## FANCY ROSE

ELEM/HIGH, DIS, ATARI BASIC, 8K, NONE, NO, \$10.00

Softswap

## SINE WAVES

HIGH SCHOOL, DIS, ATARI BASIC, 32K, NONE, NO, \$10.00

Softswap

## HANGMAN FOR ONE

ELEM/HIGH, DIS, ATARI BASIC, 8K, NONE, NO, \$10.00

Softswap

## BOURREAU

ELEM/HIGH, DIS, ATARI BASIC, 8K, NONE, NO, \$10.00

Softswap

*SOFTSWAP is a project of the San Mateo County Office of Education & Computer-Using Educators. All of the programs are in the public domain and may be copied without charge by visiting the center and bringing your own diskette. Mail order software can be purchased for \$10.00 per disk.*

## MULTIPLICATION BINGO

ELEM/HIGH, DIS, ATARI BASIC, 16K, NONE, NO, \$10.00

Softswap

## MATH QUIZ

6+, DIS, ATARI BASIC, 8K, NONE, NO, \$10.00

Softswap

## SCRAMBLED WORD

ELEM/HIGH, DIS, ATARI BASIC, 8K, NONE, NO, \$10.00

Softswap

## NAME THE STATES

ELEM/HIGH, DIS, ATARI BASIC, 8K, NONE, NO, \$10.00

Softswap

## BAGELS

ELEM/HIGH, DIS, ATARI BASIC, 8K, NONE, NO, \$10.00

Softswap

## COMPUTER DISCOVERY

12-16, CAS, NONE, 32K, NONE, NO, \$184.95  
12-16, DIS, NONE, 32K, NONE, NO, \$184.95

Science Research Assoc.

## TEACHER'S AID

TEACHERS, DIS, ATARI BASIC, 16K, NONE, NO, \$59.95

Dr. Daley's Software

## DEPRECIATION

ADULT, DIS, NONE, 48K, NONE, NO, \$225.00

Money Disk

## MEMORY BUILDER: CONCENTRATION

A series of educational games to improve memory, attention span and concentration. Letters and 3-letter words are used. Player has three options: play against the computer, play against him or herself, play against another player. Especially good for parent and child to play together.

6+, CAS, ATARI BASIC, 16K, NONE, NO, \$16.95

Program Design, Inc.

## SPELLING BUILDER

Master all the difficult words most people have trouble with. Is it "supercede" or "supersede," "combustable" or "combustible?" Eight programs plus an audio cassette offer not just a spelling drill but a method for approaching difficult words. Final test of 25, 10-word lists. SPB-AT-C

12+, CAS, ATARI BASIC, 16K, NONE, NO, \$19.95

Program Design, Inc.

## LOOK AHEAD

8+, DIS, ATARI BASIC, 24K, JC, NO, \$20.00

Johnson Software

## MORSE TUTOR

8+, CAS, ATARI BASIC, 16K, NONE, NO, \$29.95

Macrotronics, Inc.

## SPANISH WORD GUIDE

ADULT, DIS, NONE, 24K, NONE, NO, \$19.95

Zapata Microsystems

## EDUCATION

CONTINUED

### CODE BREAKER

Three scrambled message games of increasing difficulty that build basic word handling skills needed for good writing. First game scrambles letters within the words in the message; next two games scramble letters and also word order. The last game gives the hardest messages. Messages are made up by the computer from an extensive word list.

CHILD, CAS, NONE, 16K, NONE, NO, \$16.95

Program Design, Inc.

### SOME COMMON BASIC PROGRAMS

SOME COMMON BASIC PROGRAMS includes 76 programs on disk as well as the book from Osborne/McGraw-Hill.

ADULT, DIS, ATARI BASIC, 40K, NONE, NO, \$40.00

High Technology Software Products, Inc.

### MATH FOOTBALL

Math Football is a fun math drill and practice game. Skill levels are adjustable for each player so a child can play with an adult. Math Football uses the special ATARI<sup>®</sup> Computer graphics and sound effects.

7+, CAS, ATARI BASIC, 16K, NONE, NO, \$20.00  
7+, DIS, ATARI BASIC, 24K, NONE, NO, \$20.00

Johnson Software

### TRAP

ELEM/HIGH, DIS, ATARI BASIC, 16K, NONE, NO, \$10.00

Softswap

### MATH FACTS LEVEL III

CHILD, CAS, ATARI BASIC, 24K, NONE, NO, \$15.00

T.H.E.S.I.S.

### PRESCHOOL FUN

CHILD, CAS, ATARI BASIC, 16K, NONE, NO, \$15.00

T.H.E.S.I.S.

### SPATIAL RELATIONS

3-6, CAS, ATARI BASIC, 24K, NONE, NO, \$17.50

T.H.E.S.I.S.

### HIDDEN WORDS

ALL, CAS, ATARI BASIC, 24K, JC, NO, \$17.50

T.H.E.S.I.S.

### FISHING FOR HOMONYMS

CHILD, CAS, ATARI BASIC, 16K, NONE, NO, \$15.00

T.H.E.S.I.S.

### MATH FACTS LEVEL I

CHILD, CAS, ATARI BASIC, 16K, NONE, NO, \$15.00

T.H.E.S.I.S.

### WORD SCRAMBLE

CHILD, CAS, ATARI BASIC, 8K, NONE, NO, \$15.00

T.H.E.S.I.S.

### MATH FACTS LEVEL II

CHILD, CAS, ATARI BASIC, 24K, NONE, NO, \$15.00

T.H.E.S.I.S.

### WORD MATE

CHILD, CAS, ATARI BASIC, 16K, NONE, NO, \$15.00

T.H.E.S.I.S.

### SPELLBOUND

ALL, CAS, ATARI BASIC, 24K, NONE, NO, \$15.00

T.H.E.S.I.S.

### CRIBBAGE

CHILD, CAS, ATARI BASIC, 24K, NONE, NO, \$15.00

T.H.E.S.I.S.

### CASINO I

CHILD, CAS, ATARI BASIC, 16K, NONE, NO, \$15.00

T.H.E.S.I.S.

### COMPUTATION

CHILD, CAS, ATARI BASIC, 16K, NONE, NO, \$15.00

T.H.E.S.I.S.

### WANTED

CHILD, CAS, ATARI BASIC, 16K, NONE, NO, \$15.00

T.H.E.S.I.S.

### GUESSWORD

CHILD, CAS, ATARI BASIC, 16K, NONE, NO, \$15.00

T.H.E.S.I.S.

### DRILL & INSTRU- C. PHONICS

6-10, CAS, NONE, 32K, NO, NONE, \$1,150.00  
6-10, DIS, NONE, 32K, NO, NONE, \$1,150.00

Science Research Assoc.

## MICROTEACH

'Teacher Pak' turns computer into automatic course writer. No programming required. 'Student Pak' enables user to take course and exam. Courseware becomes your own property when produced by you. Dealer terms available.

All, DIS, NONE, 48K, NONE, NO, \$429.50

**Compumax**

## CHEM LAB SIMULATIONS

Chem Lab Simulations 1, 3, and 4 are from our growing collection of exciting educational products which delight even the most reluctant learners. Designed to interactively illustrate actual experiments performed in beginning chemistry classes, Chem Lab 1 illustrates TITRATION, Chem Lab 3 illustrates CALORIMETRY, and Chem Lab 4 illustrates THERMODYNAMICS.

13+, DIS, ATARI BASIC, 40K, NONE NO, \$100.00

**High Technology Software Products, Inc.**

## LET'S SPELL

Spelling instruction for second graders. Uses animation, sound and voice to teach standard spelling list. Course teaches 90 words with review and performance check.

CHILD, CAS, ATARI BASIC, 8K, NONE, NO, \$16.95

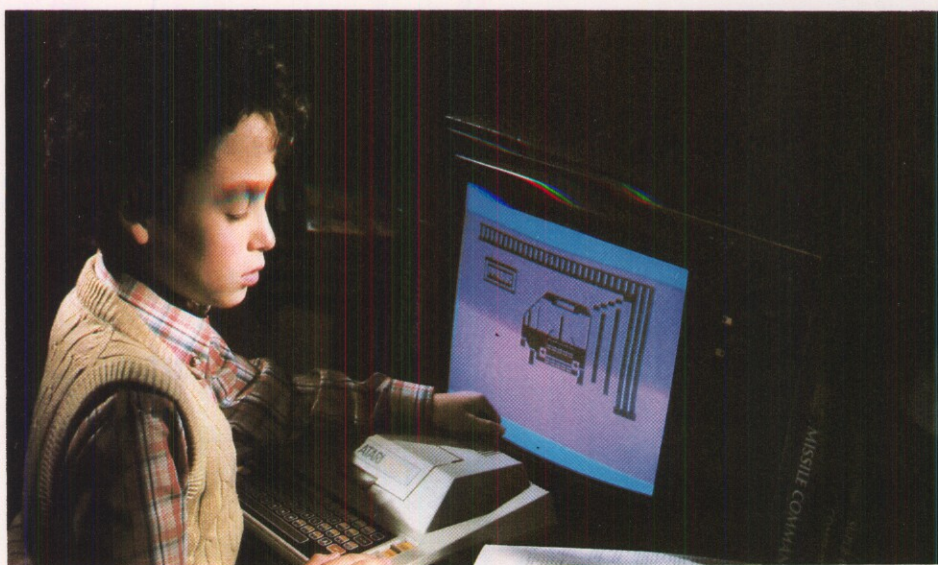
**Program Design, Inc.**

## CASH REGISTER

Simulation where player must make change using graphic cash register that appears on screen. Program on A side is voice tutorial that teaches how to use the program. Actual program is on B side. Teaches practical math skills in a fun way.

CHILD, CAS, ATARI BASIC, 16K, NONE, NO, \$16.95

**Program Design, Inc.**



## STORY BUILDER/WORD MASTER

Series of partially completed verses that the child completes. Teaches grammar skills in an enjoyable way. Word Master is a logic game where the child tries to guess a 3-letter word generated by the computer. Teaches reasoning and vocabulary.

CHILD, CAS, ATARI BASIC, 16K, NONE, NO, \$16.95

**Program Design, Inc.**

## ADDITION WITH CARRYING

More like games than math drill, this program walks the child through each step of an addition problem. Inputs are made through a joystick and the results are scored. Program uses sound and color as an integral part of teaching.

CHILD, CAS, ATARI BASIC, 8K, JC, NO, \$16.95

**Program Design, Inc.**

## LEGACY FROM BEYOND

8+, CAS, NONE, 16K, JC, NO, \$15.00

**Libraries Unlimited, Inc.**

## READING COMPREHENSION

13+, CAS, EDUC, 4K, NONE, NO, \$79.00

**Dorsett Educational Systems, Inc.**

## CARPENTRY

13+, CAS, EDUC, 4K, NONE, NO, \$79.00

**Dorsett Educational Systems, Inc.**

## GENERAL SHOP PRACTICE

13+, CAS, EDUC, 4K, NONE, NO, \$79.00

**Dorsett Educational Systems, Inc.**

## CONSTRUCTION

13+, CAS, EDUC, 4K, NONE, NO, \$79.00

**Dorsett Educational Systems, Inc.**

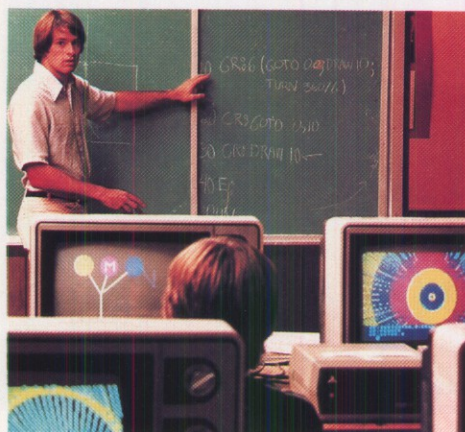
## INDEPENDENT SOLID-STATE ELECTRONICS

13+, CAS, EDUC, 4K+, NONE, NO, \$79.00

**Dorsett Educational Systems, Inc.**

# EDUCATION

CONTINUED



## MATH—SPEED FACTS

6-12, CAS, ATARI BASIC, 16K, NONE, NO, \$9.95  
6-12, DIS, ATARI BASIC, 16K, NONE, NO, \$9.95

JMH Software of Minnesota

## MATH—TIMED FACTS

6-12, CAS, ATARI BASIC, 16K, NONE, NO, \$9.95  
6-12, DIS, ATARI BASIC, 16K, NONE, NO, \$9.95

JMH Software of Minnesota

## ABC'S

4-7, CAS, ATARI BASIC, 16K, NONE, NO, \$9.95  
4-7, DIS, ATARI BASIC, 16K, NONE, NO, \$9.95

JMH Software of Minnesota

## ALPHABETIZE

8-14, CAS, ATARI BASIC, 16K, NONE, NO, \$9.95  
8-14, DIS, ATARI BASIC, 16K, NONE, NO, \$9.95

JMH Software of Minnesota

## DICTIONARY USE

8-13, CAS, ATARI BASIC, 16K, NONE, NO, \$9.95  
8-13, DIS, ATARI BASIC, 16K, NONE, NO, \$9.95

JMH Software of Minnesota

## VOWEL SOUNDS (5 PROGRAMS)

6-10, CAS, ATARI BASIC, 16K, NONE, NO, \$9.95  
6-10, DIS, ATARI BASIC, 16K, NONE, NO, \$9.95

JMH Software of Minnesota

## MONEY CHANGE

7-12, CAS, ATARI BASIC, 16K, NONE, NO, \$9.95  
7-12, DIS, ATARI BASIC, 16K, NONE, NO, \$9.95

JMH Software of Minnesota

## STARS NUMBER GUESS

4-8, CAS, ATARI BASIC, 16K, NONE, NO, \$9.95  
4-8, DIS, ATARI BASIC, 16K, NONE, NO, \$9.95

JMH Software of Minnesota

## BAGELS SUPREME

8-ADULT, CAS, ATARI BASIC, 16K, NONE, NO, \$9.95  
8-ADULT, DIS, ATARI BASIC, 16K, NONE, NO, \$9.95

JMH Software of Minnesota

## ROCKET SPELL

8-14, CAS, ATARI BASIC, 16K, NONE, NO, \$9.95  
8-14, DIS, ATARI BASIC, 16K, NONE, NO, \$9.95

JMH Software of Minnesota

## SCRAMBLE SPELL

8-14, CAS, ATARI BASIC, 16K, NONE, NO, \$9.95  
8-14, DIS, ATARI BASIC, 16K, NONE, NO, \$9.95

JMH Software of Minnesota

## TIC TAC TOE SPELL

8-14, CAS, ATARI BASIC, 16K, NONE, NO, \$9.95  
8-14, DIS, ATARI BASIC, 16K, NONE, NO, \$9.95

JMH Software of Minnesota

## SPELLING PRACTICE

8-14, CAS, ATARI BASIC, 16K, NONE, NO, \$9.95  
8-14, DIS, ATARI BASIC, 16K, NONE, NO, \$9.95

JMH Software of Minnesota

## BOOKSHELF

8-14, CAS, ATARI BASIC, 16K, NONE, NO, \$9.95  
8-14, DIS, ATARI BASIC, 16K, NONE, NO, \$9.95

JMH Software of Minnesota

## CALENDAR

7-12, CAS, ATARI BASIC, 16K, NONE, NO, \$9.95  
7-12, DIS, ATARI BASIC, 16K, NONE, NO, \$9.95

JMH Software of Minnesota

## MATH—NUMBER SEQUENCE

4-10, CAS, ATARI BASIC, 16K, NONE, NO, \$9.95  
4-10, DIS, ATARI BASIC, 16K, NONE, NO, \$9.95

JMH Software of Minnesota

## NUMBER SEQUENCE

4-10, CAS, ATARI BASIC, 16K, NONE, NO, \$9.95  
4-10, DIS, ATARI BASIC, 16K, NONE, NO, \$9.95

JMH Software of Minnesota

## MATH—DIVING FACTS

CHILD, CAS, ATARI BASIC, 16K, NONE, NO, \$9.95  
CHILD, DIS, ATARI BASIC, 16K, NONE, NO, \$9.95

JMH Software of Minnesota

## MATH—PLACE VALUE

8-14, CAS, ATARI BASIC, 16K, NONE, NO, \$9.95  
8-14, DIS, ATARI BASIC, 16K, NONE, NO, \$9.95

JMH Software of Minnesota

CODE: Age range; CAS(ette), DIS(kette), ROM (cartridge); Additional cartridge required [ATARI BASIC, MUSIC (Composer), NONE]; RAM memory required; Controllers required [JC (joystick controllers), PC (paddle controllers), NONE or OTHER]; Printer [REQ(uired), OPT(ional), NO]; Price

## MATH—NUMERICAL NAMES

6-9, CAS, ATARI BASIC, 16K, NONE, NO, \$9.95  
6-9, DIS, ATARI BASIC, 16K, NONE, NO, \$9.95

JMH Software of Minnesota

## MATH—TENS AND HUNDREDS

6-10, CAS, ATARI BASIC, 16K, NONE, NO, \$9.95  
6-10, DIS, ATARI BASIC, 16K, NONE, NO, \$9.95

JMH Software of Minnesota

## MATH—RACE CAR FACTS

6-12, CAS, ATARI BASIC, 16K, NONE, NO, \$9.95  
6-12, DIS, ATARI BASIC, 16K, NONE, NO, \$9.95

JMH Software of Minnesota

## MATH—TIC TAC TOE FACTS

6-12, CAS, ATARI BASIC, 16K, NONE, NO, \$9.95  
6-12, DIS, ATARI BASIC, 16K, NONE, NO, \$9.95

JMH Software of Minnesota

## MATH—COUNTING

4-7, CAS, ATARI BASIC, 16K, NONE, NO, \$9.95  
4-7, DIS, ATARI BASIC, 16K, NONE, NO, \$9.95

JMH Software of Minnesota

## COMPU-READ 3.0

G4-6, DIS, NONE, 48K, NONE, NO, \$29.95

Edu-Ware Services, Inc.

## COMPU-MATH FRACTIONS

G4-6, DIS, NONE, 48K, NONE, NO, \$39.95

Edu-Ware Services, Inc.

## PRESCHOOL IQ BUILDER

Teaches vital cognitive skills that children must learn in order to do well in school. In Part 1, Same and Different, the child discriminates between two forms. In Part 2, Letter Builder, the child matches a letter on the TV monitor to one on the keyboard. Accompanying Parent's Guide gives instructions.

CHILD, CAS, ATARI BASIC, 8K, JC, NO, \$16.95

Program Design, Inc.

## PRESCHOOL IQ BUILDER 2

Teaches letter, symbol, number and word discrimination. Child uses joystick to move symbol, word, etc. at top of screen to cover correct choice at the bottom of the screen. Three choices are given. If the answer is correct, a face will appear on the screen that "sings" to the child. Performance is scored by the computer.

CHILD, CAS, NONE, 8K, JC, NO, \$16.95

Program Design, Inc.

## DIGITAL ELECTRONICS

13+, CAS, EDUC, 4K, NONE, NO, \$79.00

Dorsett Educational Systems, Inc.

## VOCATIONAL READING COMPREHENSION

13+, CAS, EDUC, 4K, NONE, NO, \$79.00

Dorsett Educational Systems, Inc.

## MATH

13+, CAS, EDUC, 4K+, NONE, NO, \$79.00

Dorsett Educational Systems, Inc.

## READING COMPREHENSION

Five reading comprehension programs which present logical problems where the student picks the one word in four which doesn't belong with the rest. Builds analytical skills essential for understanding what you read.

CHILD, CAS, ATARI BASIC, 8K, NONE, NO, \$16.95

Program Design, Inc.

## ANALOGIES

Contains six programs that teach what an analogy is and what the common types are, provide a method for analyzing analogies and provide practice in handling all types of analogies. Final lesson is an analogies test.

ADULT, CAS, ATARI BASIC, 8K, NONE, NO, \$16.95

Program Design, Inc.

## FIRST-AID SAFETY

13+, CAS, EDUC, 4K+, NONE, NO, \$79.00

Dorsett Educational Systems, Inc.

## HEALTH SERVICES CAREER

13+, CAS, EDUC, 4K+, NONE, NO, \$79.00

Dorsett Educational Systems, Inc.

## PHILOSOPHY

13+, CAS, EDUC, 4K+, NONE, NO, \$79.00

Dorsett Educational Systems, Inc.

## AUTO MECHANICS

13+, CAS, EDUC, 4K, NONE, NO, \$79.00

Dorsett Educational Systems, Inc.

## EDUCATION

CONTINUED

### VOCABULARY BUILDER 1: BEGINNING

Eleven programs include a set of graded vocabulary questions on synonyms and antonyms (the most common type of vocabulary question on an IQ test). The last lesson is a test on vocabulary. Total of 400 questions, 2000 words in course.

ADULT, CAS, ATARI BASIC, 8K, NONE, NO, \$16.95

Program Design, Inc.

### VOCABULARY BUILDER 2: ADVANCED

Eleven programs like those in Vocabulary 1, but using a more advanced word list.

ADULT, CAS, ATARI BASIC, 8K, NONE, NO, \$16.95

Program Design, Inc.

### MATH ELECTRONICS

13+, CAS, EDUC, 4K, NONE, NO, \$79.00

Dorsett Educational Systems, Inc.

### SPANISH/ENGLISH

13+, CAS, EDUC, 4K+, NONE, NO, \$79.00

Dorsett Educational Systems, Inc.

### STATISTICS

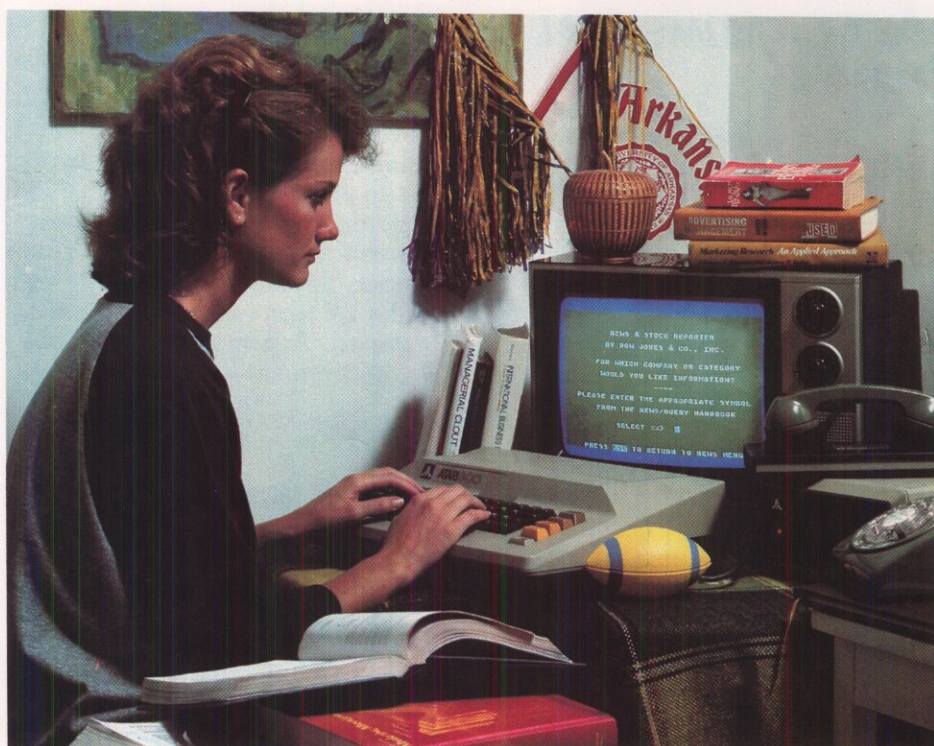
13+, CAS, EDUC, 4K, NONE, NO, \$79.00

Dorsett Educational Systems, Inc.

### MANAGEMENT SIMULATOR

16+, CAS, NONE, 24K, NONE, NO, \$19.95  
16+, DIS, NONE, 32K, NONE, NO, \$19.95

Dynacomp, Inc.



### QUANTITATIVE COMPARISON

Eight programs that prepare students for SAT type math problems. Joystick is used to input answers. Problems start with elementary concepts and cover most of the math material that would appear in the math section of the test. Comprehensive guide included. A final test is given along with explanations.

ADULT, CAS, ATARI BASIC, 8K, NONE, NO, \$18.95

Program Design, Inc.

### NUMBER SERIES

Contains eight programs that provide practice in a common math problem type. The first lesson teaches how to approach number series and how to analyze their patterns. Later lessons provide practice with increasingly difficult problems, giving clues if you have difficulty with the problem. Final lesson is a test of abilities.

ADULT, CAS, ATARI BASIC, 8K, NONE, NO, \$16.95

Program Design, Inc.

### CODEWORD

ADULT, DIS, NONE, 8K, NONE, NO, \$12.00

H.E.L. Laboratories, Inc.

### MATH DUEL/ BASIC MATH

ADULT, DIS, NONE, 8K, NONE, NO, \$12.00

H.E.L. Laboratories, Inc.

### STUMPER (HANGMAN)

ADULT, DIS, NONE, 8K, NONE, NO, \$12.00

H.E.L. Laboratories, Inc.

### CHEM LAB SIMULATION #1

18+, DIS, NONE, 48K, NONE, NO, \$75.00

Conduit

### LAB IN COG. & PERCEPTION

14+, DIS, NONE, 48K, NONE, NO, \$125.00

Conduit

CODE: Age range; CAS(sette), DIS(kette), ROM(cartridge); Additional cartridge required [ATARI BASIC, MUSIC (Composer), NONE]; RAM memory required; Controllers required [JC (joystick controllers), PC (paddle controllers), NONE or OTHER]; Printer [REQ(uired), OPT(ional), NO]; Price

# COMPUTER INFORMATION SERVICES

## DOW JONES\* NEWS/RETRIEVAL SERVICE

Sign up fee: none with ATARI TeleLink 1 Cartridge  
Minimum charge per use: none  
Minimum monthly charge: none  
Hours open: 6a.m. - 3a.m. (EST)  
Prime time hours: 6a.m. - 6p.m. M-F  
Non-prime time hours: 6:01p.m. - 3a.m. M-F  
6a.m. - 3a.m. Sat. Sun. Holidays  
Prime time rates: \$1.00/min. for news; \$0.75/min. for quotes  
Non-prime time rates: \$0.20/min. for news; \$0.15/min. for quotes

**Dow Jones & Company**

\*Indicates trademark of Dow Jones & Company

## COMPUSERVE INFORMATION SERVICE

Sign up fee: None with ATARI TeleLink 1 cartridge  
Minimum charge per use: none  
Minimum monthly charge: none for non-prime time use  
\$45.00 for prime time use  
Hours open: 24 hours  
Prime time hours: 5a.m. - 6p.m.  
Non-prime time hours: 6:01p.m. - 5a.m.  
Prime time rates: \$22.50/hour  
Non-prime time rates: \$5.00/hour

**CompuServe, Inc.**

## THE SOURCE, AMERICA'S INFORMATION UTILITY\*

Sign up fee: \$100.00  
Minimum charge per use: \$0.25  
Minimum monthly charge: \$10.00  
Hours open: 6a.m. - 4a.m. (EST)  
Prime time hours: 7a.m. - 6p.m. M-F  
Non-prime time hours: 6:01 - 12:00a.m. M-F  
7a.m. - 12:00a.m. Sat. Sun. Holidays  
Economy hours: 12:01a.m. - 7a.m. Everyday  
Prime time rates: \$18.00/hour  
Non-prime time rates: \$5.75/hour  
Economy rates: \$4.25/hour

**Source Telecomputing Corporation**

\*Indicates service mark of Source Telecomputing Corporation; a subsidiary of The Reader's Digest Association, Inc.

## BUSINESS

### VISICALC\*

ADULT, DIS, NONE, 32K, NONE, OPT,  
\$199.95

**Personal Software, Inc.**

\*Indicates trademark of Personal Software, Inc.

### BUSINESS DECISIONS 1

ADULT, CAS, ATARI BASIC, 8K, NONE, OPT,  
\$14.95  
ADULT, DIS, ATARI BASIC, 8K, NONE, OPT,  
\$18.95

**Zapata Microsystems**

### NO-NONSENSE BOOKS

ADULT, DIS, NONE, 48K, NONE, NO,  
\$225.00

**Money Disk**

### MICROBIZ

4 business accounting packages: Microledger, A/P, A/R, and inventory control. These will work both stand-alone and integrated. Order entry available in early 1982.

ADULT, DIS, ATARI BASIC, 48K, NONE,  
OPT., \$140.00-\$200.00

**Compumax**

### SMALL BUSINESS

Seven programs for Small Business.

8+, CAS, ATARI BASIC, 32K, NONE,  
OPT, \$29.95

**University Software, Inc.**

## PROFESSIONAL



### HIGRAPH-PIE CHART

ADULT, DIS, NONE, 48K, NONE, NO, \$25.00

Houston Instruments

### BAR CHART

ADULT, DIS, NONE, 48K, NONE, NO, \$10.00

Houston Instruments

### HIGRAPH-PIE CHART

ADULT, DIS, NONE, 48K, NONE, NO, \$25.00

Houston Instruments

### BAR CHART

ADULT, DIS, NONE, 48K, NONE, NO, \$10.00

Houston Instruments

### GREAT CIRCLE EQUATION PROGRAM

17+, DIS, ATARI BASIC, 24K, NONE, NO, \$50.00

Johnson Software

### THREE BASE CALCULATORS

12+, CAS, ATARI BASIC, 8K, NONE, NO, \$12.95  
12+, DIS, ATARI BASIC, 18K, NONE, NO, \$12.95

Color Computer Concepts

### ANALYSIS OF VARIANCE

ADULT, CAS, NONE, 24K, NONE, NO, \$39.95  
ADULT, DIS, NONE, 32K, NONE, NO, \$39.95

Dynacomp, Inc.

### REGRESSION I

ADULT, CAS, NONE, 24K, NONE, NO, \$19.95  
ADULT, DIS, NONE, 32K, NONE, NO, \$19.95

Dynacomp, Inc.

### REGRESSION II

ADULT, CAS, NONE, 24K, NONE, NO, \$19.95  
ADULT, DIS, NONE, 32K, NONE, NO, \$19.95

Dynacomp, Inc.

### MULTILINEAR

ADULT, CAS, NONE, 24K, NONE, NO, \$24.95  
ADULT, DIS, NONE, 32K, NONE, NO, \$24.95

Dynacomp, Inc.

### DIGITAL FILTER

ADULT, CAS, NONE, 24K, NONE, NO, \$29.95  
ADULT, DIS, NONE, 32K, NONE, NO, \$29.95

Dynacomp, Inc.

### ROOTS

ADULT, CAS, NONE, 16K, NONE, NO, \$10.95  
ADULT, DIS, NONE, 24K, NONE, NO, \$10.95

Dynacomp, Inc.

### FOURIER ANALYZER

ADULT, CAS, NONE, 24K, NONE, NO, \$16.95  
ADULT, DIS, NONE, 32K, NONE, NO, \$16.95

Dynacomp, Inc.

### TRANSFUNCTIONAL ANALYZER

ADULT, CAS, NONE, 24K, NONE, NO, \$19.95  
ADULT, DIS, NONE, 32K, NONE, NO, \$19.95

Dynacomp, Inc.

## GRAPHICS

### THE GRAPHICS MACHINE

Turn your computer into an incredible graphics tool with advanced commands like box, fill, polygon, circle, text, and more! Three colors in graphics mode 8 with instant text. Create colorful drawings and charts that are saved to disk in 5 seconds.

15+, DIS, NONE, 48K, NONE, NO, \$19.95

Santa Cruz Educational Software

### MICRO-PAINTER

ALL, DIS, NONE, 48K, JC, OPT., \$34.95

Datasoft, Inc.

### 3D SUPERGRAPHICS

ALL, DIS, ATARI BASIC, 40K, NONE, NO, \$39.95

United Software of America

### CHARACTER GENERATOR

10+, CAS, ATARI BASIC, 24K, JC, OPT, \$15.95  
10+, DIS, ATARI BASIC, 24K, JC, OPT, \$19.95

Datasoft, Inc.

### GRAPHICS COMPOSER

ALL, DIS, ATARI BASIC, 32K, JP, NO, \$39.95

Versa Computing, Inc.

### S252 PLOT & DRAW

ALL, CAS, ATARI BASIC, 8K, JC, NO, \$18.00

Mosaic Electronics

### HIDDEN LINE

\$25.00

Cognitive Electronics

CODE: Age range; CAS(ette), DIS(kette), ROM (cartridge); Additional cartridge required [ATARI BASIC, MUSIC (Composer), NONE]; RAM memory required; Controllers required [JC (joystick controllers), PC (paddle controllers), NONE or OTHER]; Printer [REQ(uired), OPT(ional), NO]; Price

## CURVE-USA

14+, DIS, ATARI BASIC, 48K, NONE,  
PLOTTER, \$75.00

West Coast Consultants

## CURVE-FIT

14+, DIS, ATARI BASIC, NONE,  
PLOTTER, \$99.50

West Coast Consultants

## CURVE'S THREE-D

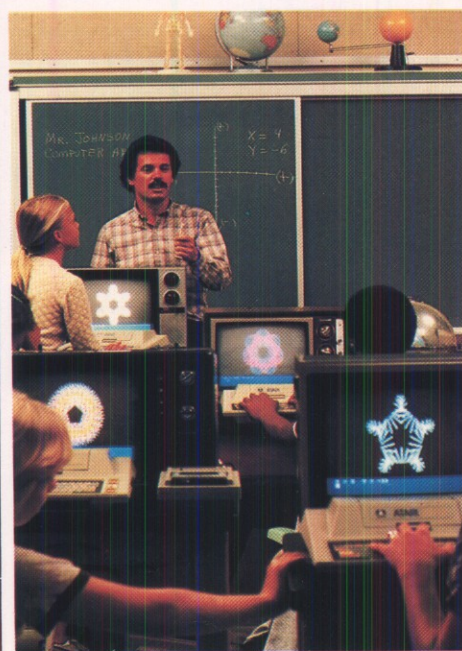
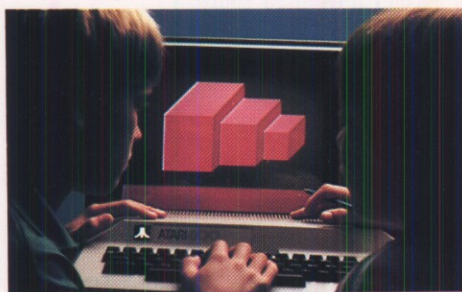
14+, DIS, ATARI BASIC, 48K, NONE,  
PLOTTER, \$199.00

West Coast Consultants

## CURVE PROGRAM

14+, DIS, ATARI BASIC, 48K, NONE,  
PLOTTER, \$199.00

West Coast Consultants



## LANGUAGE & UTILITIES

### DISKMANAGER\*

Now you can maintain an inventory of all the programs in your growing library on one disk. DISKMANAGER prints out labels (category, date and number) and alphabetized lists for each disk in your library. You can also print out a master list of all of your programs.

The DISKMANAGER can automatically update your library when you change the programs on any of your data disks. Fast machine language sorts allow you to locate any program in your library quickly and efficiently. It offers full wild card search functions as well as a variety of other time saving features. With 48K of memory you can store over 700 programs.

12+, DIS, ATARI BASIC, 32K, NONE,  
OPT, \$29.95

Synapse Software

\*Indicates trademark of Synapse Software.

### MACHINE LANGUAGE MONITOR AND DISASSEMBLER

For the ATARI 400/800™ Computer. This exciting program allows you to load and examine the CPU, RAM and hardware registers at will. You can disassemble ROMs or **ANY** cartridge which permits booting. Switch from BASIC to Machine Language at the push of a button. First rate documentation makes this a **MUST** for learning machine code.

12+, CAS, NONE, 4K, NONE, NO, \$19.95

The Computer Kitchen

### OS/A+\*

**OS/A+** is a professional, command-driven DOS. Completely compatible with DOS 2 files, **OS/A+** includes many features at one low price:

**EASMD** (Editor/**AS**sembler/**D**ebug)  
Upgraded and complete assembly language development package  
**SOURCE PROGRAMS AS LARGE AS YOU NEED**

And you can 'INCLUDE' equate files, library routines, etc.

**BATCH COMMANDS**

Via simple, easy-to-understand plain text words.

**DUPDSK, COPY, INIT and more**  
Useful utility programs

There's much **MORE**, so write or call for a descriptive brochure.

16+, DN, NONE, 32K, NONE, NO, \$80.00

Optimized Systems Software, Inc.

\*Indicates trademark of Optimized Systems Software, Inc.

### MACHINE LANGUAGE MONITOR

12+, CAS, NONE, 4K, NONE, NO, \$19.95

Addcom Electronics, Inc.

### LISP 2.0

ADULT, DIS, NONE, 48K, JC, OPT, \$149.95

Datsoft, Inc.

### DISK DETECTIVE

ADULT, DIS, ATARI BASIC, 24K, NONE,  
NO, \$29.95

Datsoft, Inc.

### DATASM-65

ALL, DIS, NONE, 48K, NONE, OPT, \$149.95

Datsoft, Inc.

### UTILITY PACK

ADULT, DIS, NONE, 32K, NONE, NO, \$50.00

Avatar Software

CODE: Age range; CAS(sette), DIS(kette), ROM (cartridge); Additional cartridge required [ATARI BASIC, MUSIC (Composer), NONE]; RAM memory required: Controllers required [JC (joystick controllers), PC (paddle controllers), NONE or OTHER]; Printer [REQ(quired), OPT(ional), NO]; Price

## BASIC A+\*

From the AUTHORS of ATARI® BASIC: **BASIC A+** is the **only** language that is completely upward compatible with ATARI BASIC.

**BASIC A+** has over 40 new features and well-placed enhancements. A **few** examples:

**MEANINGFUL ERROR MESSAGES**  
**SUPERB PLAYER/MISSILE GRAPHICS**

New (9!) new **BASIC A+** words make using this fantastic hardware easy and fun.

**POWERFUL, ADVANCED INPUT/OUTPUT**

PRINT USING, RGET/RPUT (record I/O), BGET/BPUT (block I/O), more

**STRUCTURED PROGRAMMING MADE EASY**

WHILE . . . ENDWHILE and an extremely flexible and powerful structure: IF . . . ELSE . . . ENDIF

There's much **MORE**, including a **FREE** syntax reference card for **BASIC A+** and ATARI BASIC. Just call or write.

12+, DIS, NONE, 32K, NONE, NO, \$80.00

**Optimized Systems Software, Inc.**

\*Indicates trademark of Optimized Systems Software, Inc.

## EDIT 6502\*

**Fast.** This coresident, two pass, assembler, disassembler, text editor, and machine language monitor is the answer to the machine language programmer's wildest dreams. As a **ROM based program** its speed and flexibility allows the user complete manipulation of 6502 code. Disassemblies create editable source files with the ability to use predefined labels. Complete control with 41 commands, 5 disassembly modes, and 24 monitor commands (including step, trace, and read/write disk). Available are 20 pseudo opcodes. Linked assemblies allowed, plus software stacking (single and multiple page). User has complete printer control (i.e., pagination, titles, and tab setting), and may move source, object and symbol table anywhere in memory.

#2002 Edit 6502\* Assembler, Disassembler, Text Editor **ROM ONLY**. \$199.95

15+, ROM, NONE, 24K, NONE, NO, \$199.95

**LJK Enterprises, Inc.**

\*Indicates trademark of LJK Enterprises, Inc.

## RAM CHECK UTILITY

ALL, DIS, NONE, 16K, NONE, NO, \$19.95

**MPC Peripherals Corp.**

## SCREEN PRINTER PROGRAM

Use your ATARI Computer to print high resolution graphics on an EPSON (MX-70,\* MX-80,\* MX-80F/T\* and MX-100\*), Centronics 739, Trendcom 200\*\* or IDS (440G or 445G Paper Tiger.\*\*\*

This sophisticated machine language program transfers graphics displays to a printer. This program works in all text and graphics modes and may be activated either from the keyboard or under your program control.

### Features include:

Transfers any graphics or text mode—including mixed mode with custom display lists.

Increase or decrease horizontal and/or vertical scaling.

Print black on white or reverse image white on black.

Grey scale simulation of either color or luminance level.

Keyboard or program (subroutine call) control of print.

55 page professionally written User Guide features detailed tutorial, quick reference, sample printouts, example programs, important program addresses and more!

Disk contains DOS 1 and DOS 2 versions plus demo program.

Fine scrolling, player/missiles and GTIA chip all supported. Display List Interrupts not supported.

Requires Macrotronic Parallel Printer Interface.

ALL, DIS, NONE, 32K, NONE, REQ, \$69.95

**Macrotronic, Inc.**

\*Indicates a trademark of EPSON America Inc.

\*\*Indicates a trademark of Trendcom Inc.

\*\*\*Indicates a trademark of Integral Data Systems Inc.

# HARDWARE

## DISK DRIVES



### MICROLINK FLOPPY DISK SYSTEM

Floppy disk system—8 inch drives

- 512K bytes of storage per drive
- Expandable up to 8 drives
- Compatible with ATARI® 800™ and 400™ Computers
- Compatible with ATARI 810 Disk Drive and DOS II
- A great value

16K, \$1400.00

California Microlink Corporation

### CORVUS 10MB DISK SYSTEM

\$5350.00

Corvus Systems, Inc.

### CORVUS 20MB DISK SYSTEM

\$6450.50

Corvus Systems, Inc.

### CORVUS 5MB DISK SYSTEM

\$3750.00

Corvus Systems, Inc.

## MODEMS

### PRENTICE STAR ACOUSTIC MODEM

Available in Bell compatible (103, 113) and CCITT (V.21) models, the Prentice STAR acoustic modem fulfills the communication requirements of most users. User friendly, simple to operate, 0-300 bits, originate/answer. \$199.00

INT, SP. CABLE, \$199.00

Prentice Corporation



### MICROLINK DATA COMMUNICATION SYSTEM

Modular Data Communication System

- Direct connect modem module
- Communications input/output port
- Terminal emulation program
- Auto dial (auto answer optional)
- Requires ATARI 800® Computer w/ 16K memory
- A great value

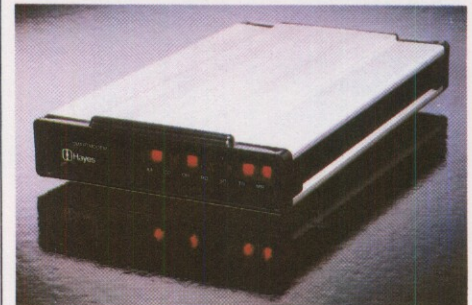
16K, DD, ATARI BASIC, \$400.00

California Microlink Corporation

### ATC-3 SERIAL MODEM

\$39.50

MPC Peripherals Corp.



### HAYES STACK® SMARTMODEM

The Hayes Stack Smartmodem is an RS-232C, auto-answer, auto-dial data communications system compatible with virtually every personal computer including the ATARI 800® Home Computer. Features include Touch-tone\*\* or pulse dialing and direct connection to single or multi-line telephones.

The Smartmodem can be program controlled in any language through ASCII character strings. A series of unique "Set" commands and 8 configuration switches change operating parameters with ease. Smartmodem operates in full- or half-duplex up to 300 baud.

Seven LED indicators on the front panel provide a visual check of Smartmodem status, and an audio speaker allows the user to monitor the progress of calls. In addition, Smartmodem features automatic baud rate, parity sense and word size detection.

The Hayes Stack Smartmodem is covered by a two-year limited warranty. It is available in most retail computer stores.

INT, \$279.00

Hayes Microcomputer Products, Inc.

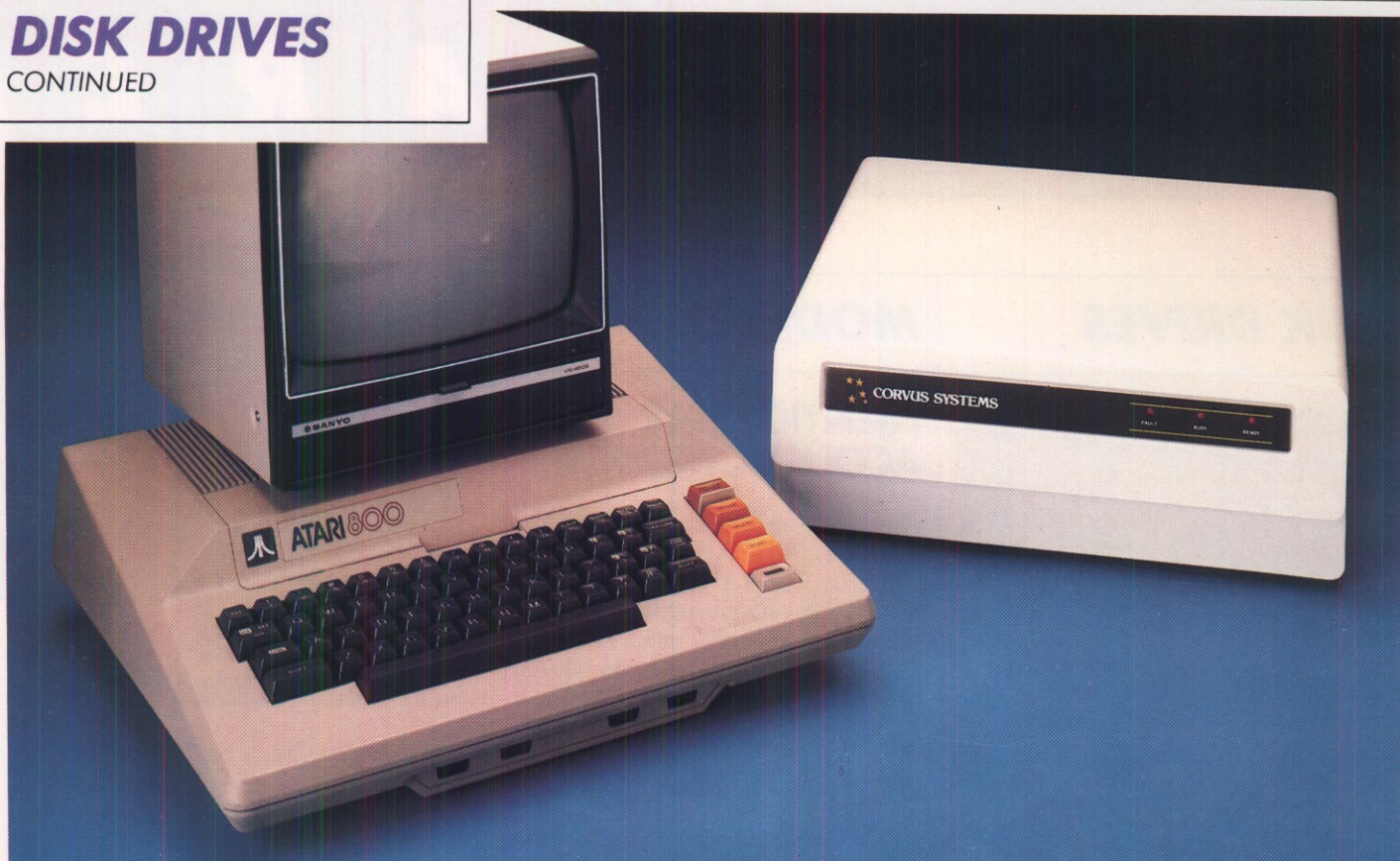
\*Indicates trademark of Hayes Microcomputer Products, Inc.

\*\* Registered trademark of Bell Systems

CODE: K=Minimum RAM memory required; DD=ATARI 810™ Disk Drive; PRT=Printer; PR=ATARI 410™ Program Recorder; SP=Special (non-ATARI); INT=ATARI 850™ Interface Module (SP-INT=Special non-ATARI interface); ATARI BASIC Cartridge

# DISK DRIVES

CONTINUED



## WINCHESTER DISK SYSTEM

### Expand the Capability of Your ATARI 800 Computer

Now you can expand the capability of your ATARI 800 Computer with cost effective mass storage from Corvus. Our integrated family of 5, 10, and 20 million byte disk systems enables you to operate your ATARI 800 Computer with the speed, convenience, and proven reliability of systems costing thousands of dollars more. And as your needs grow, Corvus mass storage can grow too. You can start with an entry level 5 million byte system and expand it to 80 million bytes without scrapping your existing programs or operating systems.

#### Features and Benefits

- Proven Winchester technology and reliability
- Low entry-level
- Self-contained Corvus intelligent controller
- Comprehensive internal self-test diagnostics
- Wide environmental tolerances
- Wide environmental tolerances

### Complete Disk System

Corvus disk systems are complete stand alone units made up of an attractive table top enclosure, a computer interface cable, and an interface card for the ATARI 800 Computer.

Corvus disks are ready for immediate operation after being plugged into your ATARI 800 Computer. No further installation procedures are required. All Corvus drives are compatible with our Constellation local network, which allows up to 64 computers to share the data base and peripherals, and with our Mirror video cassette back up.

#### Cost Efficiencies

Corvus disk systems are not only inexpensive to buy, they are inexpensive to own. Reliable operation without the need for periodic preventive maintenance contributes to low operation cost. Costly down time is also kept to a minimum. Further expense is saved in minimizing spare parts inventories because of the Corvus modular design. Corvus disks are ideal for the cost-conscious user demanding reliable, low maintenance operations.

### Corvus Intelligent Controller

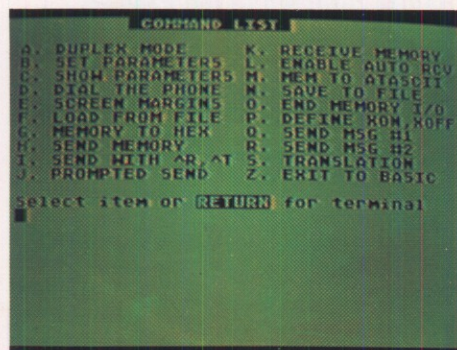
Each Corvus disk system incorporates an intelligent controller which provides high speed operation and requires virtually no software support from your ATARI 800 Computer. The controller translates high level command sequences intelligible to the disk drive, manages bidirectional data transfer between disk drive and CPU interface, and performs functions to ensure data integrity. These include transparent formatting with CRC error detection and high speed transfer using DMA (direct memory access). In addition, our full capability microprocessor design provides several advanced features that optimize system performance and add considerable configuration flexibility. Up to three add-on drives in any combination of 5, 10, or 20 million bytes can be controlled by the Corvus intelligent controller, allowing a data storage range from 5 to 80 million bytes.

5MB, \$3750.00  
10MB, \$5350.00  
20MB, \$6450.00

**Corvus Systems, Inc.**

CODE: K=Minimum RAM memory required; DD=ATARI 810™ Disk Drive; PRT=Printer; PR=ATARI 410™ Program Recorder; SP=Special (non-ATARI); INT=ATARI 850™ Interface Module (SP-INT=Special non-ATARI interface); ATARI BASIC Cartridge

## MODEMS CONTINUED



### MICROCONNECTION

A complete telecommunications package for the ATARI 400 and 800 Home Computers. The MICROCONNECTION is a direct-connect 300 baud modem available for use either with or without the ATARI 850 Interface Module. Supplied with a terminal program called TARITERM, the MICROCONNECTION turns your ATARI Home Computer into a telecommunications terminal, ready to access the hundreds of data bases and electronic bulletin boards around the country. When combined with TSMART, an intelligent terminal program, the MICROCONNECTION enables your ATARI 800 Home Computer to download and upload programs and files. Audio jacks on the rear of the

MICROCONNECTION allow spooling of data onto an inexpensive cassette recorder for storage of information when the modem is on-line.

**INTERFACE VERSION** — The MICROCONNECTION for use with the ATARI 850 Interface Module can be equipped with Autodial/Autoanswer. In this configuration it is not compatible with the ATARI TeleLink 1 cartridge, which has no dialer program. However, both TARITERM (included with the modem) and TSMART have dialer programs which enable the MICROCONNECTION to dial the telephone from the computer keyboard, eliminating the need for a telephone instrument at the computer site.

**DIRECT CONNECT VERSION** — The MICROCONNECTION for use without the ATARI 850 Interface Module plugs directly into the data buss of the ATARI 400/800 Home Computers, or into the ATARI 810 Disk Drive, if used. This version is equipped with a DB-25 connector for driving a serial printer. Anything appearing on the screen when on-line will be echoed to the printer. When off-line, the MICROCONNECTION can be utilized as a printer interface through the use of TYPER-A, a program in which the MICROCONNECTION is treated as a standard ATARI Home Computer peripheral device. With this program you can direct any input/output to the modem, to provide printed output from a program, to make listings, or to write your own terminal program.

The MICROCONNECTION—a complete telecommunications package for the ATARI 400/800 Home Computers—a Modem and Much More!

PR, INT, ATARI BASIC, \$199.50 +

#### The Microperipheral Corporation

\*Indicates trademark of the Microperipheral Corporation.

### ACOUSTIC COUPLER MODEM

\$159.00

Inmac

## PRINTERS

### REN TEC ES INTERFACE

Letter Quality Word Processor Printer/Typewriter

The Ren Tec Es Interface converts the Olympia ES100/101 typewriter to a letter quality printer by combining daisy wheel technology with microprocessor control, a typewriter/printer combination is now possible with a significant price-performance breakthrough. \$295.00

Renaissance Technology Corporation

### 88G PRINTER

\$749.00

MPI

### PRINTER INTERFACE

\$29.80

Addcom Electronics, Inc.

### SPRINTER 2C PRINTER

\$175.00

Alphacom, Inc.

### DP2000 PRINTER

\$1695.00

Alphacom, Inc.

### SPRINTER 80/C

\$395.00

Alphacom, Inc.

### SPRINTER 4C

\$295.00

Alphacom, Inc.

## PRINTERS CONTINUED

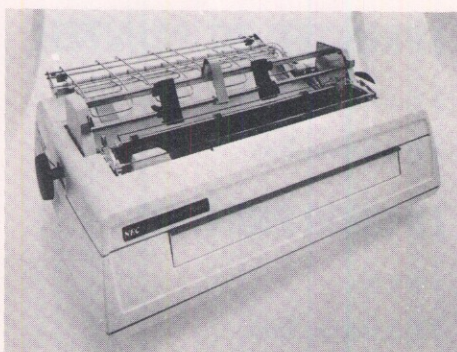


### SELLUM F-86 PRINTER

Features	Sellum F-86
Speed	80 cps
Shannon Test	72 cps
Print Wheels	127 char. plastic 96 char. metal
Noise Level	60 db

See *InterSell Sellum N-35 Specifications*.  
INT, \$3495.00

**InterSell**



### SELLUM N-77 PRINTER

Features	Sellum N-77
Speed	55 cps
Shannon Test	48 cps
Print Wheels	128 char.
Noise Level	60 db

See *InterSell Sellum N-35 Specifications*.  
INT, \$3295.00

**InterSell**



### SCREEN PRINTER INTERFACE

Use your ATARI Computer to print high resolution graphics on an EPSON (MX-70, \* MX-80, \* MX-80F/T\* and MX-100\*), Centronics 739, Trendcom 200\*\* or IDS (440G or 445G) Paper Tiger\*\*\* printer. (The MX-80 and MX-80F/T printers require the GRAPHTRAX option).

This product includes the Macrotronics Parallel Printer Interface cable and a sophisticated machine language program which allows transferring graphics displays to a printer. Both high and low resolution graphics may be printed.

#### Features include:

Transfers any graphics or text mode—including mixed mode with custom display lists.  
Increase or decrease horizontal and/or vertical scaling.  
Print black on white or reverse image white on black.  
Grey scale simulation of either color or luminance level.  
Keyboard or program (subroutine call) control of print.

55 page professionally written User Guide features detailed tutorial, quick reference, sample printouts, example programs, important program addresses and more!

Disk contains DOS 1 and DOS 2 versions plus demo program.

Fine scrolling, player/missiles and GTIA chip all supported. Display List Interrupts not supported.

16K, DD, PRT, \$139.00

#### Macrotronics, Inc.

\*Indicates a trademark of EPSON America Inc.  
\*\*Indicates a trademark of Trendcom Inc.  
\*\*\*Indicates a trademark of Integral Data Systems Inc.



### PARALLEL PRINTER INTERFACE

Connect a printer directly to your ATARI Computer.

How? A cable assembly plugs into Controller Jacks 3 and 4 on the front of your ATARI Home Computer. The other end of the cable plugs into your parallel ASCII Printer. A short program is read into the computer from disk or cassette; from then on all printer data is directed to the Parallel Printer Interface (instead of the ATARI Serial Port).

The program will remain in memory until the computer power is turned off (i.e., it is unaffected by "SYSTEM RESET," "BREAK" or "NEW").

The interface works equally well with BASIC, DOS or the ATARI Assembler/Editor. It will work with virtually any program which directs printer data through the IOCB. It will work with machine language programs which do not reside in or clear memory locations 0700H to 07AAH.

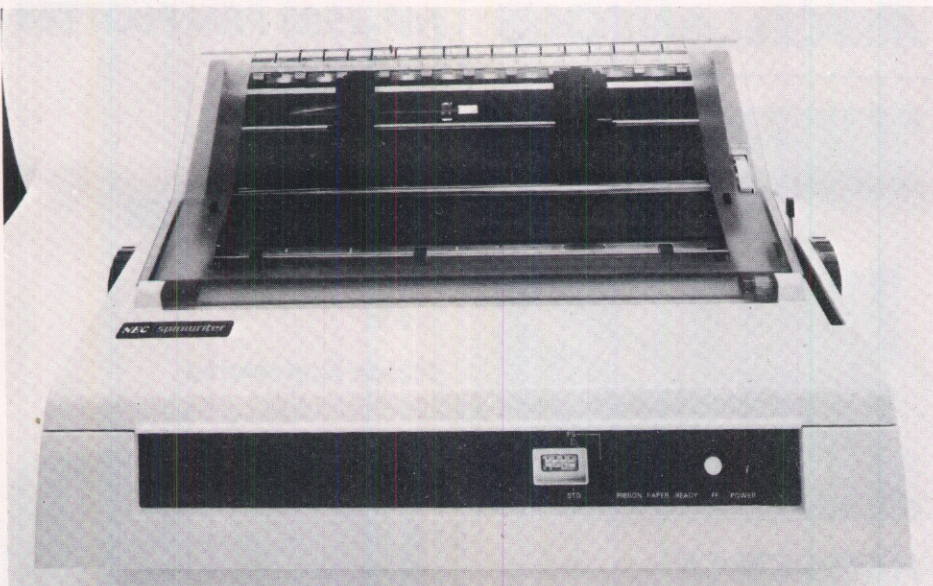
A Disk booting version is included; each time you boot DOS, the Parallel Printer Driver boots in with it. When using a Disk system, therefore, the interface software is essentially invisible to the user—just forget it and it will be there when you want a printout.

Two versions of the Parallel Printer Interface are available: The A4P fits the ATARI 400 Computer and the A8P fits the ATARI 800 Computer. Connectors are available for most of the popular printers, giving "plug-in" installation. Be sure to specify which connector you desire.

8K, PR or DD, SP PRT, \$69.95

#### Macrotronics, Inc.

CODE: K=Minimum RAM memory required; DD=ATARI 810™ Disk Drive; PRT=Printer; PR=ATARI 410™ Program Recorder; SP=Special (non-ATARI); INT=ATARI 850™ Interface Module (SP-INT=Special non-ATARI interface); ATARI BASIC Cartridge



## SELLUM N-35 PRINTER

Features	Sellum N-35
Speed	33 cps
Shannon Test	28 cps
Print Wheels	128 char.
Noise Level	60 db

### HARDWARE FUNCTIONS

Switch Controllable—(3) 8 position DIP switches (with 50 connector cable and mounting bracket for extended operator control).

- Top of Form  
Sets top of form
- Form Length  
(8) Selectable for lengths
- Form Feed  
Advances paper to next T.O.F.
- Line Spacing  
6 LPI and 8 LPI
- Character Pitch  
10, 12, 15 and automatic proportional spacing
- Printer Emulations  
Emulates NEC 7710, Diablo 630, and Qume Sprint 5, and Centronics 737
- Error Reset  
Resets all error conditions, clears buffer w/o clearing preset printer parameters.
- Clear Buffer  
Clears buffer without resetting print parameters.
- Auto Reprint  
Automatic reprint buffer (up to 255 times)

- Parity  
ON/OFF, EVEN/ODD
- Auto Line Feed  
Adds line feed to each carriage return, on/off.
- Baud Rate Settings  
16 baud rates, 50, 75, 110, 134.5, 150, 300, 600, 1200, 1800, 2000, 2400, 3600, 4800, 7200, 9600, 19,200.

### SOFTWARE FUNCTIONS

All hardware switch selectable functions are software controllable.

- Escape Sequence definitions  
Set horizontal tab  
Reset horizontal tab  
Print in red  
Print in black  
Set vertical tab  
Clear all tabs  
Reverse line feed  
Read DIP switches  
Set format mode  
Set right margin  
Set form length  
Set left margin  
Enter program mode  
Exit program mode  
Graphics mode  
Auto bi-directional printing  
Half-line feed  
Reverse half-line feed  
Absolute horizontal tab  
Absolute vertical tab  
Set top margin  
Set bottom margin  
Clear top/bottom margins  
Relative vertical tab  
No motion on next character

- Word Processing Assist Group  
Bold print  
Shadow print  
Auto underscore  
Auto proportional space  
Offset selection  
Fine backspace (1/120")  
Auto center  
Auto justify
- Vector Plotting  
Enter absolute plot 1  
Enter absolute plot 2  
Enter relative plot 1  
Enter relative plot 2  
Change plot character  
Change plot resolution  
Clear plot mode
- Remote Diagnostics  
Initiate printer  
Reset error  
Request Status 1  
Request Status 2  
Request Status 3  
Enter user mode  
Enter wraparound mode  
Exit test mode  
Print suppression  
Reset the printer
- Special Integrator Features  
User selectable proportional spacing values.  
Sheet feeder mode—allows easy interface to most mechanical sheet feeders.  
Software selectable Baud Rate.  
Auto reprint (up to 255 copies).  
Auto clear error—printer automatically resumes printing upon correction of ribbon, paper or cover open condition.
- Special Integrator Features  
Auto adjustable tabbing.  
Printer Emulation—Emulate protocols for NEC 7710, Diablo 630, and Qume Sprint 5.  
"SOFT Key"—user definable character replaces "ESC" character.  
Automatic Software support of ETX/ACK and DC1/DC3, (XON, XOFF) protocols.  
Increased graphics speed.  
Intelligent bi-directional and logic seeking printing—"for-gives" most escape sequences without causing error conditions.

*Continued page 32*

## PRINTERS CONTINUED

### SELLUM N-35 PRINTER

*Continued*

#### AUDIBLE ALARM

Micro-coded alarm differentiates error conditions.

#### POWER REQUIREMENT

**Multi-voltage regulator:** -5 VDC regulation (standard) strappable +12 VDC or -12 VDC ( $\pm 17$  VDC to  $\pm 12$  VDC).

#### GENERAL

- Width—14.325 inches
- Height—5.875 inches
- Weight—1 lb.

#### OPTIONS

- Memory  
16K 48K Dynamic RAM
- Custom Firmware  
Baudot, EIA, ISO, EBCDIC, or special I/O protocols.
- Front Panel  
Operator control panel
- Cabling

#### WARRANTY

Limited warranty against all defects in materials and workmanship for a period of 180 days from date of sale. \$2495.00

**InterSell**

### LP/800

LP/800 Line Printer Interface

- Cabling available for popular parallel line printers
- Requires ATARI 800 Computer with 16K memory
- Compatible with ATARI Computer language cartridges
- A great value

16K, DD, PRT, ATARI BASIC, \$125.00

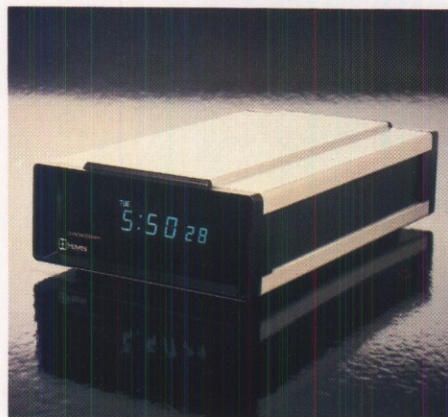
**California Microlink Corporation**

### ATC-2 SERIAL PRINTER

\$39.50

**MPC Peripherals Corp.**

## MISCELLANEOUS



### HAYES STACK<sup>™</sup> CHRONOGRAPH

The Hayes Stack<sup>™</sup> Chronograph is an RS-232C compatible calendar/clock for small computer applications requiring accurate timekeeping, making it perfect for the ATARI 800 Home Computer. Features include quartz-crystal precision, a large, easy-to-read display, a computer alarm, automatic leap year adjust, and automatic baud rate, parity sense and word size detection.

The Chronograph is powered independently of your computer, and a battery backup system maintains the correct time, date and weekday up to a year when the power fails or is disconnected. For added protection, the Chronograph features a write-protect switch to prevent accidental changing of date and time.

The Chronograph's command set consists of simple ASCII character strings which allow the user to set, read and display calendar and clock data, control the computer alarm and select various options. The Hayes Stack Chronograph is covered by a two-year limited warranty. The Chronograph is available in most retail computer stores with a suggested retail price of

INT, \$249.00

**Hayes Microcomputer Prod.**

\*Indicates trademark of Hayes Microcomputer Products, Inc.

## MP-2508 PEN PLOTTER

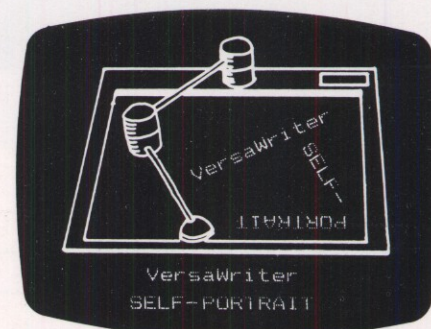
\$775.00

**Maura Engineering**

### SIA-250 PLOTTER SERIALINT

\$195.00

**Maura Engineering**



We have used the VersaWriter to draw a picture of itself. Text may be added in any size or direction.

## VERSAWRITER

**VersaWriter** from Peripherals Plus is a low-cost drawing tablet for the ATARI 400 and 800 Home Computer which allows users to create high-resolution, multicolor images in graphics modes 7 and 8.

**VersaWriter** allows ATARI Computer users to draw freehand or trace existing images with a unique pantograph with magnifying crosshairs.

The **VersaWriter** user can select from a menu one of six colors for lines (or 256 colors available for fill-in areas), brush size (width of drawing line), and magnification. Images can be stored on disk and recalled. Resolution is 320 x 192 pixels.

Additional features of the **VersaWriter** include: Textwriter, which allows the user to add text in a variety of fonts, color fill, and routines which allow the user to store on disk images created by the **VersaWriter** for use in other programs.

32K, DD, ATARI BASIC, \$299.00

**Peripherals Plus**



## TYPE-'N TALK

- Unlimited vocabulary
- Built-in text-to-speech algorithm
- 70 to 100 bits-per-second speech synthesizer

Type-'N Talk, an important technological advance from Votrax, enables your computer to talk to you simply and clearly—with an unlimited vocabulary. You can enjoy the many features of Type-'N Talk, the new text-to-speech synthesizer.

You operate Type-'N Talk by simply typing English text and a talk command. Your typewritten words are automatically translated into electronic speech by the system's microprocessor-based text-to-speech algorithm.

### The endless uses of speech synthesis.

Type-'N Talk adds a whole new world of speaking roles to your computer. You can program verbal reminders to prompt you through a complex routine and make your computer announce events. In teaching, the computer with Type-'N Talk can actually tell students when they're right or wrong—even praise a correct answer. And of course, Type-'N Talk is great fun for computer games. Your games come to life with spoken threats of danger,

reminders, and praise. Now all computers can speak. Make yours one of the first.

### Text-to-speech is easy.

English text is automatically translated into electronically synthesized speech with Type-'N Talk. ASCII code from your computer's keyboard is fed to Type-'N Talk through an RS 232C interface to generate synthesized speech.

Just enter English text and hear the verbal response (electronic speech) through your audio loud speaker. For example: simply type the ASCII characters representing "h-e-l-l-o" to generate the spoken word "hello."

### TYPE-'N TALK has its own memory.

Type-'N Talk has its own built-in microprocessor and a 750 character buffer to hold the words you've typed. Even the smallest computer can execute programs and speak simultaneously. Type-'N Talk doesn't have to use your host computer's memory, or tie it up with time-consuming text translation.

### Data switching capability allows for ONLINE usage.

Place Type-'N Talk between a computer or modem and a terminal. Type-'N Talk can speak all data sent to the terminal while online

with a computer. Information randomly accessed from a data base can be verbalized. Using the Type-'N Talk data switching capability, the unit can be "de-selected" while data is sent to the terminal and vice-versa—permitting speech and visual data to be independently sent on a single data channel.

### Selectable features make interfacing versatile.

Type-'N Talk can be interfaced in several ways using special control characters. Connect it directly to a computer's serial interface. Then a terminal, line printer, or additional Type-'N Talk units can be connected to the first Type-'N Talk, eliminating the need for additional RS-232C ports on your computer.

Using unit assignment codes, multiple Type-'N Talk units can be daisy-chained. Unit addressing codes allow independent control of Type-'N Talk units and your printer.

### Look what you get for \$375.00.

#### TYPE-'N TALK comes with:

- Text-to-speech algorithm
- A one-watt audio amplifier
- SC-01 speech synthesizer chip data rate: 70 to 100 bits per second
- 750 character buffer
- Data switching capability
- Selectable data modes for versatile interfacing
- Baud rate (75-9600)
- Data echo of ASCII characters
- Phoneme access modes
- RS 232C interface
- Complete programming and installation instructions

The Votrax Type-'N Talk is one of the easiest-to-program speech synthesizers on the market. It uses the least amount of memory and it gives you the most flexible vocabulary available anywhere.

INT, \$375.00

### Votrax

\*Indicates trademark of Votrax

## WATANABE SINGLE PEN PLOTTER

Requires special controller port cable  
\$1400.00

**Watanabe Instruments Corporation**



## CORVUS MULTIPLEXOR NETWORK

### Corvus Multiplexer Adds Network Capability

**BIG SYSTEM PERFORMANCE.** The Corvus Multiplexer provides an inexpensive means by which ATARI Computer owners can enjoy big system network capability and obtain the many benefits of computers costing many thousands of dollars more. These benefits include: Growth capability as needs change, intercommunications between stations (e.g. electronic mail), sharing a large data base, and common usage of expensive peripherals.

The Corvus Multiplexer is a unique electronic switching system that interconnects up to 64 personal computers in an interactive multi-user network. Recent developments have lowered the cost of microcomputers to the point where they are often less expensive than mass data storage and data communications. Capitalizing on this trend, the Corvus Multiplexer puts the full power and versatility of these low

cost computers at the front end of the network. Each station has full computer power, yet has the ability to share costly peripherals, such as mass storage, printers, plotters, and graphic displays. With the Multiplexer, each computer enjoys high speed access (at 60,000 bytes per second) to up to 80 million bytes of on-line Corvus hard disk capacity.

**AVAILABLE NOW.** The Multiplexer network is a proven product now in use worldwide for a variety of applications, such as word processing, accounting, retail stores, education, medical offices, and order processing.

**MULTI-USER PLUS MULTI-FUNCTION.** The Corvus Multiplexer network not only turns your ATARI Computer into a multi-user system, it adds multi-function capability too. This means that none of the computers have to be dedicated to one application, such as word processing. In fact, a complete multi-station word processing group can share the large Corvus data base with several applications such as accounting, inventory control, management information,

order processing, or financial planning. With up to 80 megabytes of mass storage to draw from, a wide range of applications can be supported by a Corvus Multiplexer network, at a fraction of the cost of a large mainframe computer system.

**BACK-END NETWORK.** Technically, the Corvus Multiplexer is a back-end local network in which multiple computers are connected in a star configuration. To assure compatibility and future expandability, each computer interface uses the standard Corvus bus, the same as that employed in the Corvus disk system and the Mirror Backup.

At the center of the star is the Corvus Host multiplexer. This central node contains hardware that polls up to eight computers in a round robin fashion. For larger networks a multi-level system is set up with one to eight host multiplexers (each supporting up to eight computers) connected to the master multiplexer. Thus total network capacity is 64 computers.

CORVUS DISK SYSTEM, \$900.00

**Corvus Systems, Inc.**

CODE: K=Minimum RAM memory required; DD=ATARI 810™ Disk Drive; PRT=Printer; PR=ATARI 410™ Program Recorder; SP=Special (non-ATARI); INT=ATARI 850™ Interface Module (SP-INT=Special non-ATARI interface); ATARI BASIC Cartridge

## **ATC-1 PARALLEL PRINTER**

\$39.50

**MPC Peripherals Corp.**

## **AT-80 80-COL VIDEO BOARD**

**MPC Peripherals Corp.**

## **AT-EP EPROM PROGRAMMER**

\$199.50

**MPC Peripherals Corp.**

## **PERSONALITY MODULE**

\$24.50

**MPC Peripherals Corp.**

## **WATANABE SIX PEN PLOTTER**

Requires special controller port cable  
\$1700.00

**Watanabe Instruments  
Corporation**

## **CORVUS MIRROR**

\$750.00

**Corvus Systems, Inc.**

## **TRENDCOM 200 PRINTER**

\$395.00

**Trendcom**

## **TEXT/SPEECH SYNTHESIZER**

\$400.00

**Street Electronics Corp.**

## **DATALINK**

\$549.00

**Axlon, Inc.**

## **P-ROM WRITER**

12+, ROM, ATARI BASIC, NONE, NO,  
\$80.00

**Addcom Electronics, Inc.**

## **EASY I/O**

Easy I/O — parallel and serial I/O

- Compatible with ATARI\* 800\*
- 2 parallel 8-bit data ports
- 1 serial data port 110-9600 baud
- Cabling and software available for popular line printers
- A great value at \$175.00

**California Microlink Corporation**

## **AIR SHOW**

\$6850.00

**Asinc**

## **IBM TYPEWRITER CONVERTER**

\$599.00

**Escon Products**

## **VERSA WRITER**

\$299.00

**Versa Computing, Inc.**

## **A007 MEMORY 2K BUFFER**

\$25.00

**MPI**

## **A002 SINGLE SHEET FEEDERS**

\$25.00

**MPI**

## **HILOT PEN PLOTTERS**

\$1085.00 - \$2690.00

**Houston Instruments**

## **HI-PAD DIGITIZERS**

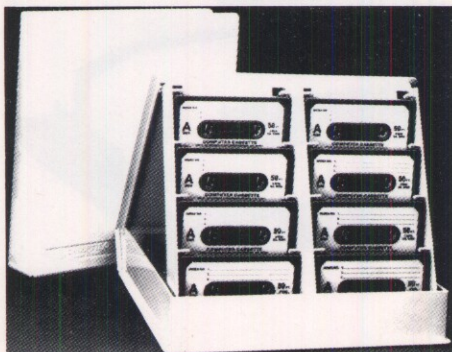
\$825.00 - \$995.00

**Houston Instruments**



# ACCESSORIES

## CASES



### DIGITAL COMPUTER CASSETTES

- Eight Special 50 Foot Cassettes.
- Unique Storage Album.
- Extra cases

No Sales Tax For Out of State Customers. Price Includes Free Shipping in Continental U.S. Dealer Inquiries Welcome.

\$9.95

Sound Concepts

### CASSETTES IN CASES

\$9.95

Sound Concepts

### COMPUTER CASSETTES

\$9.95 EACH OR 3 FOR \$26.00  
EXTRA CASES \$4.95

Sound Concepts

### QUEST COMPUTER PACKS

\$34.95

Unicolor

### COMPUTER CASE

\$109.00

Computer Case Company

### PRINTER CASE

\$89.00

Computer Case Company

### MONITOR CASE

\$99.00

Computer Case Company

### COMPUTER CASE

Unicolor



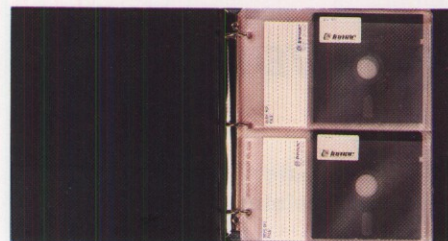
### MICROCASE

Lightweight, rugged protection for your ATARI Computer investment.

Microcase III as shown in picture holds ATARI 800 or ATARI 400 Computer, disk drive, program recorder, 2 power packs, one joystick controller, T V connector. Microcase I holds ATARI 800 or 400 Computer, tape recorder, one power pack, 2 joystick controllers, 2 paddle controllers, T V connectors, cassettes.

Microcase I, \$99.00  
Microcase III, \$120.00

The Casemaker



### INMAC MINIFLOPPY ENVELOPES & BINDER KIT

Protect your flexible disks from static electricity with Inmac's envelopes and binders.

Once your floppies leave the drive, you'll want to give them the very best protection, and that means Inmac's disk envelopes and binders.

Our new envelopes have been specially treated to form an embossed surface of tiny air pockets. Because air is a natural insulator, the pockets act as a resilient cushion to strengthen the envelope and eliminate static electricity, which can destroy the data on your disks.

Our companion 3-ring binder features a "D-ring" construction that stores envelopes completely flat, preventing dangerous crimping. Each binder holds up to 20 envelopes.

**To order . . .** Inmac accessories for your ATARI Computer are as near as your phone. To order, just call the Inmac number closest to you. We'll have them on their way within 24 hours.

**And get our catalog.** You can get a free copy of the Inmac Microcomputer User's Ideabook, the first catalog with a full line of products for the micro user. Just write us. Remember, Inmac is the largest independent source for computer supplies, accessories, and cables.

2590XA, \$14.00-\$16.00

Inmac Corporation

## MINIKASSETTE/10

\$4.95

SRW Computer Library  
Storage Systems

## KASSETTE/10

\$5.95

SRW Computer Library  
Storage Systems

## QUEST COMPUTER PACKS

\$44.95

Unicolor

## QUEST COMPUTER PACKS

\$49.95

Unicolor

## QUEST COMPUTER PACKS

\$34.95

Unicolor

## PAPER

## BASIC PROGRAMMER'S FORMS

Inmac

## CUSTOM CHECKS

International Business Forms

## SNAP APART FORMS

International Business Forms



## COMPUTER CASE

These attache style cases have been designed specifically to hold the ATARI Computer equipment in a fully operational configuration. This single case can be used in a variety of equipment configurations. It will hold the ATARI 800 Computer along with an ATARI 810 Disk Drive and ATARI 410™ Program Recorder or ATARI 822™ Printer. It can also hold the ATARI 800 Computer with an ATARI 820™ Printer. The same case can also be used to carry the ATARI 400 Computer along with peripheral equipment. Space is available in the case to hold the ATARI 850™ Interface Module, power supply, ROM cartridges, tapes, disks, manuals and other miscellaneous items. A matching case (the P402) is available to carry the ATARI 825 Printer and the AP105 case will carry a monitor or small TV set along with other accessories such as a modem or small printer.

The equipment need not be removed from the case to operate. Simply remove the detachable lid, plug in the equipment and operate. All equipment is held in position with a security strap and cradled in foam rubber for protection.

AT301 Computer & Accessories Case	\$109.00
P402 Printer Case (for Atari 825 80-Column Printer)	89.00
AT105 Monitor or TV Case	99.00

Computer Case Company

## PINFED 3 x 5 CARDS

\$40.00/CT

International Business Forms

## PINFED 4 x 6 CARDS

\$50.00/CT

International Business Forms

## PINFED #15 9 1/2 x 11

\$21.30/CT

International Business Forms

## PINFED #20 9 1/2 x 11

\$28.95/CT

International Business Forms

# CABLES



## SERIAL & PARALLEL CABLES

### RENAISSANCE TECHNOLOGY'S PRODUCTS FOR ATARI

ATARI 850™ Interface Module to Diablo 1640/1650, 3 meter, serial cable	60.00
ATARI 850 Interface Module to Diablo 630, 3 meter, serial cable	60.00
ATARI 850 Interface Module to Epson 800, 3 meter, serial cable	60.00
ATARI 850 Interface Module to Anadex, 3 meter, serial cable	60.00
ATARI 850 Interface Module to Anadex, parallel cable	90.00
ATARI Controller Ports to Anadex, parallel cable	90.00
ATARI 850 Interface Module to Diablo 1640/1650, parallel cable	90.00
ATARI Controller Ports to Diablo 1640/1650, parallel cable	90.00
ATARI 850 Interface Module to Watanabe Miplot, parallel cable	90.00
ATARI Controller Ports to Watanabe Miplot, parallel cable	90.00
ATARI Controller Ports to Watanabe Miplot, parallel cable	90.00

ATARI 400 and ATARI 800 Computer 10-Key Accounting Pad	124.95
ATARI 850 Interface Module Parallel to Olympia ES100 Interface	295.00
Parallel Cable (required for above)	60.00
DEALER INQUIRIES WELCOME	

### Renaissance Technology Corporation

## A850E EPSON PRINTER CABLE

Connect on EPSON printer (MX-70,\* MX-80,\* MX-80F/T\* or MX-100\*) to the ATARI 850 Interface Module parallel port. Includes three foot cable with appropriate connectors assembled and tested. \$30.

INT, SP PRT, \$30.00

### Macrotronics, Inc.

\*Indicates a trademark of EPSON America, Inc.

## ATC-4 MONITOR CABLE

\$29.50

### MPC Peripherals Corp.

## ATC-5 MONITOR CABLE

\$29.50

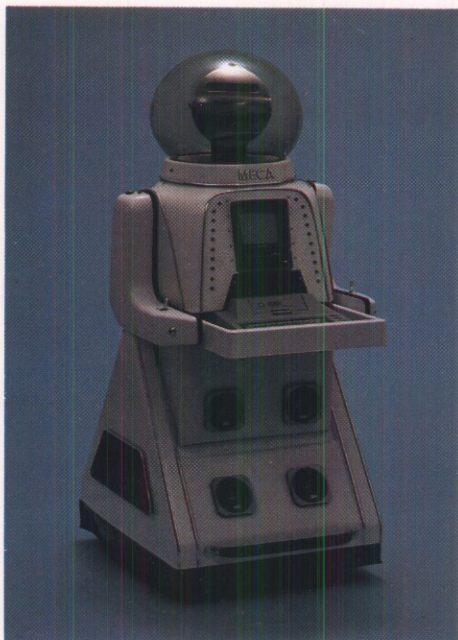
### MPC Peripherals Corp.

## A021-C CABLE ASSEMBLY

\$25.00

### MPI

## MISCELLANEOUS



### DC-2 ROBOT

**Start playing with the future.**  
ATARI 400 Home Computer and a DC-2 Robot.

For sale or rent.

JC, \$8600.00-\$12,000.00

**Android Amusement Corp.**

### REAL TIME CLOCK

\$69.50

**Avatar Software**

### LESTICK

\$39.95

**Datasoft, Inc.**

### P-ROM BOARD WITHOUT RAM

\$39.00

**Addcom Electronics, Inc.**



### INMAC CLEAN CYCLE \* KIT

NOW THAT YOU'RE THE PROUD OWNER OF AN ATARI COMPUTER, LET US HELP YOU MAKE THE MOST OF IT, WITH INMAC ACCESSORIES.

Computer accessories are necessities. They provide that ounce of protection **before** you need the pound of cure.

Consider, for example, the Inmac Clean Cycle Kit. Until now, a dirty floppy head usually meant an expensive service call and an idle system.

Finally, there's a way to clean heads in seconds, before read/write errors shut your system down.

The Inmac Clean Cycle Kit costs just 92¢ per weekly cleaning application, with 60 or more cleanings per kit.

#### **Clean your heads safely . . . without ever touching a screwdriver.**

In normal operation, the heads of **all** floppy drives pick up oxide particles from disk surfaces, a major source of read/write errors.

The beauty of our Clean Cycle Kit is that it allows you to safely and easily clean your drive without touching so much as a screwdriver.

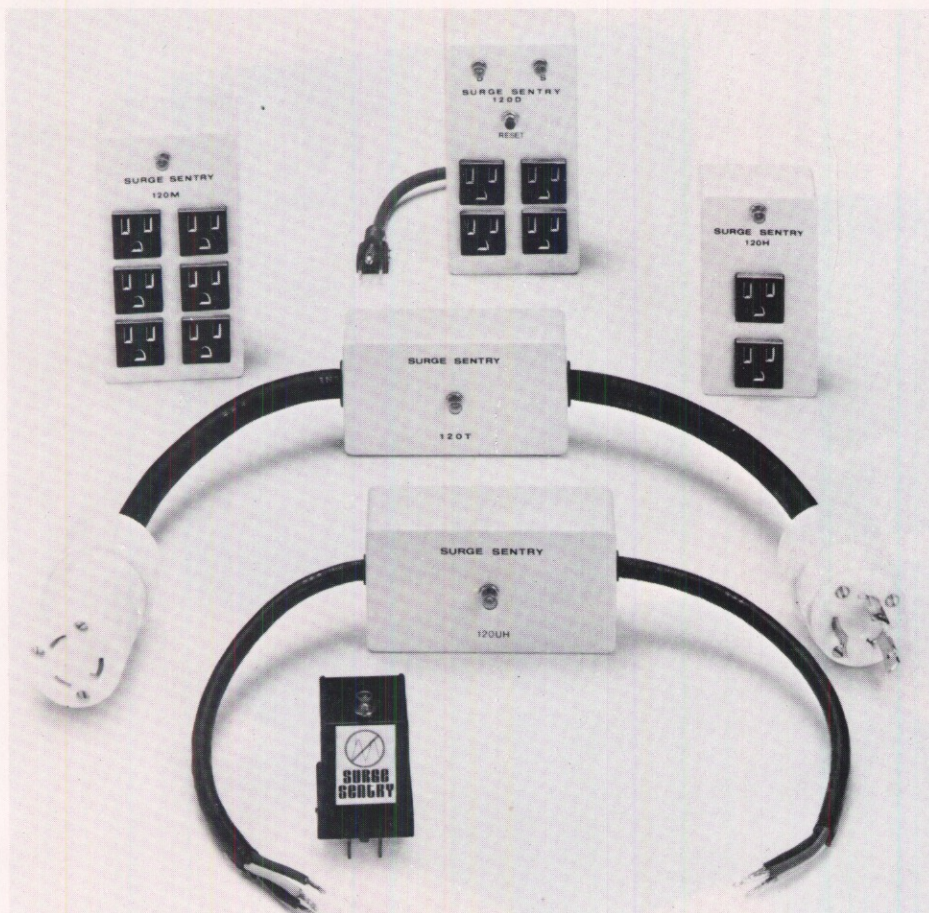
Just moisten the cleaning diskette with solution, run it in your drive for 30 seconds and you're finished. It's that simple!

As the diskette's scrubber element rotates, it removes all traces of contamination, while lubricating the head.

7159XA, \$49.00-\$55.00

**Inmac Corporation**

\*Indicates trademark of Inmac Corporation.



## SURGE SENTRY

**KILL SURGES LIKE LIGHTNING!**  
AC power line surges are destructive. A short duration surge can cause misregistration, false logic, misindexed programs, false triggering of circuits, and even premature component failure.

Surges can't be prevented, but you can stop them from reaching your ATARI Computer System—with a Surge Sentry.

Surge Sentry acts in picoseconds to dissipate up to a 1,000,000 W, 100 second surge. Triggers at 10% above nominal peak voltage. Works in parallel with the power line. Is easy to install for immediate and permanent protection. No complicated wiring or special tools required.

Six different models to choose from. Several UL Listed, including a systems model which allows you to protect your computer and several peripherals with a single unit.

Call or write for details. \$69.50 +

**RKS Industries, Inc.**

## THE TERRAPIN TURTLE

Assembled Turtle \$599.95  
Kit (Unassembled) \$399.95  
Interface for ATARI Computer \$119.95.

**Terrapin, Inc.**

## ORGANIZER STAND

\$29.95

**Micro•aids**



## INMAC PLUS DISKETTES

DON'T GAMBLE WITH YOUR PROGRAMS AND DATA. USE INMAC PLUS — THE FINEST YOU CAN BUY.

Does it really pay to use the finest disks on the market? In the few short months since we introduced Inmac Plus, thousands of personal computer users from hobbyists to scientists have said: **Yes.**

They're among the growing number of people who have come to realize that the least expensive diskettes in the long run aren't those that **always** work. **IT HAPPENS ALL THE TIME.**

Many of the "bargain" diskettes on the market not only poop out after just a short time, but as many as four out of ten don't even work the first time out of the box.

Is it truly cost-effective to save a few bucks up in front by using an inferior diskette?

It's bad enough when you lose a programming disk, but just think of the consequences of having a data diskette go bad with your accounts receivable or customer mailing list on it.

It hurts just to think about.

**Inmac Plus . . . the first and only diskettes good enough to merit a lifetime guarantee.**

You never have to worry about losing your data or a program when you put it on an Inmac Plus.

These are the finest diskettes on the market today.

They're produced to such stringent specifications that they're the only diskette available anywhere backed by a lifetime guarantee.

It doesn't matter whether you use an Inmac Plus premium diskette for 5 years or 85 years, we guarantee that they will read and write flawlessly for as long as you own them.

Should an Inmac Plus diskette **ever** fail to read or write, we'll replace it—free of charge.

## To order . . .

Inmac disks for your ATARI Computer are as near as your phone. Just call the Inmac number listed in the index that's nearest you. As with most of our products, we'll have them on their way within 24 hours.

**Inmac Plus diskettes for ATARI Computers** (Sold in boxes of 10 disks)

Cost/Disk	10	20-50
Order No.	\$5.95	\$5.35
9898-XA		

## And get our catalog

You can get a free copy of the Inmac Microcomputer User's Ideabook, the first catalog with a full line of products for the micro user. Just write to us. Remember, Inmac is the largest independent source for computer supplies, accessories, and cables.

2575XA \$10.25-\$13.00

**Inmac Corporation**

\*Indicates trademark of Inmac Corporation.

# FURNITURE



## CUSTOM DESK

Custom desk built to protect and organize your ATARI 400 or 800 Computer at a comfortable typing height. Genuine oak veneer and hardwood with a durable laminate top. Engineered with cable cut outs for a clean uncluttered look, and air flow and cooling to disk drive and drawer areas. Available with book storage or file drawer. Natural, light or medium oak, mar-proof lacquer. 27x48x30H. \$600.00

**Furn-Wood Manufacturing, Inc.**

## TIERED STACK/TRAY

\$95.00

**Hi-Ly Creations**

## FREE STAND/BASE

\$95.00

**Hi-Ly Creations**

## COMPUTER DESK W/CABINET

\$135.00

**Hi-Ly Creations**



## COMPUTEAK

The new COMPUTEAK desk combines functional engineering with the elegance of teakwood. Due to the richness and the versatility of its design, COMPUTEAK will complement the decor of any home, executive office, or computer room. For the first time, the home electronic enthusiast has a full-scale entertainment-work station designed expressly for them. COMPUTEAK is handcrafted for home video computers, computer game units and word processing. In addition, we offer a single drawer table that can be placed on either side of the unit. Desk and table are available at a price that is comparable to non-wood furniture.

COMPUTEAK desk and table are comprised of teakwood.

Small \$216.61, Large \$279.21

**Computeak**

## OTHER COMPUTER FURNITURE MANUFACTURERS

Basic Systems Corp.  
Belvis Custom Tables  
Marvel Metal Products Co.  
Non-Pareil Industries  
O'Sullivan Industries  
SRW Computer Components  
Tab Products  
The Lesjay Company  
The Maine Manufacturing Co.  
Visible Computer Supply

## COMPU TABLE \*

\$132.95

**Gusdorf Corporation**

\*Indicates trademark of Gusdorf Corporation

## FURNITURE

CONTINUED



### TERMINAL STAND/COMPUTER WORKSTATION

**EVEN THE PRICE LOOKS GOOD!**

When Sirco builds computer furniture, we give it everything we've got . . . functional beauty, durability and an unbelievably low price.

All computer furniture is constructed with a stain, mar and scratch resistant Decraguard finish. Available in Walnut or English Oak. Units support up to 400 pounds.

Now for the bottom line. Suggested list prices start as low as \$60 for terminal stands; \$120 for computer workstations. Models available in widths from 24" to 60". Most orders shipped, KD, within 5 days; units assemble easily in a few minutes. \$60.00-\$223.00

**SIRCO Manufacturing**



### CLEAR STAND

BYTM Systems, Inc. announces the introduction of a new TV/Monitor stand for ATARI 400/800 Home Computers.

The stand is made of clear polished high-impact acrylic. It securely holds a TV/Monitor up to 15 inches (diagonal) in screen size. Its open design allows maximum air flow around the console and provides easy access to top, sides and rear for cable or ROM cartridge insertion.

The use of the stand reduces workspace crowding while raising the TV/Monitor to eye level.

For ATARI 400/800 owners with ATARI 810 Disk Drives, it also provides a simple means of minimizing the potential problem identified by Atari, Inc. that:

Placing the ATARI 810 Disk Drive within 12 inches of a television set or monitor causes alteration of the data. Use the disk drive a minimum of 12 inches from the TV or monitor.

The CLEAR STAND raises the TV/Monitor 10 inches above the table level and makes leaving a diagonal space of 12 inches from the disk drive an easy problem to solve.

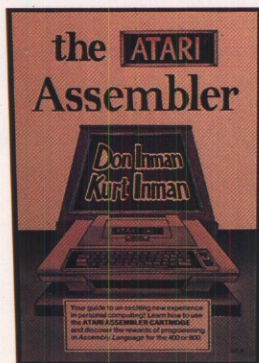
Dealer inquiries are invited.

\$59.95

**BYTM Systems, Inc.**

# PUBLICATIONS

## BOOKS



### ATARI ASSEMBLER

The ATARI ASSEMBLER by Inman & Inman. Here it is . . . a guide for using the ATARI Assembler Editor Cartridge with the ATARI 400/800 Home Computer. Your bonus: you'll also learn assembly language programming! The passport to years of creativity.

The ATARI ASSEMBLER is available from your computer supply dealer or by mail from Reston Publishing Company. Phone orders taken on (800) 336-0338.

\$12.95

Reston Publishing Co.

### COMPUTERS FOR KIDS

\$3.95

Creative Computing

### 32 BASIC PROGRAMS FOR ATARI COMPUTERS

\$19.95

Dilithium Press

### YOUR ATARI® COMPUTER: A GUIDE TO ATARI 400/800 COMPUTERS

by Lon Poole, Martin McNiff, and Steven Cook

The book every ATARI Computer owner has been waiting for, this guide from Osborne/McGraw-Hill reviews all the ATARI Computer's features—the computer, the peripherals, and the DOS. It instructs you in how to program your computer in BASIC, and it provides both introductory and advanced material on using your computer's extraordinary color graphics and sound effects.

Young beginners and accomplished programmers will both find many useful appendices including: Keyboard Codes, ASCII Codes, useful PEEK and POKE locations, Subroutine locations, DOS menu selections, Error Codes, and more. Book #465-9.

Ask for it at your local computer or book store or order directly from Osborne/McGraw-Hill.

Osborne/McGraw-Hill

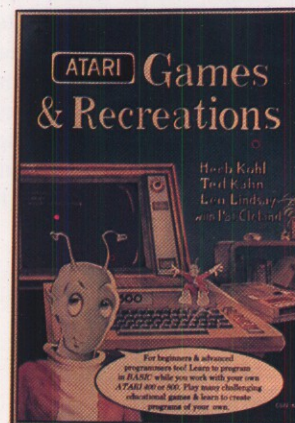
### CONVERSATIONAL BASIC

Reston Publishing Co.

### HOW TO COPYRIGHT SOFTWARE

SOFPROTEX, a division of Government Copyright Services, prints a report on "How-To Copyright Software and Secure a Trademark." The report can be purchased directly from the publisher. \$25.00

Softprotex



### GAMES & RECREATION

ATARI® GAMES & RECREATION by Kohl, Kahn & Lindsay. For the beginner as well as experienced programmer. Explores the types of games the ATARI Home Computer can run. Makes you a master of your ATARI Computer capabilities.

ATARI® GAMES & RECREATION is available from your computer supply dealer or from Reston Publishing Company. Phone orders taken on (800) 336-0338.

Reston Publishing Co.

### ATARI® SOUND AND GRAPHICS

by Moore, Lower, & Albrecht. A complete guide to your computer's artistic potential. Assuming no prior computer experience, it leads you through simple techniques for creating a fascinating array of sounds and images. \$9.95

John Wiley & Sons

## COMPUTE! FIRST BOOK OF ATARI

If you're not already a **COMPUTE!** reader, you've probably also missed our new book. We've taken from the best of our ATARI Computer information from 1980 (all issues now sold out) and put it together with new material. This excellent resource book for ATARI Computer owners is available at computer stores everywhere. If your dealer doesn't have the book, it's \$12.95 + \$2.00 shipping and handling by direct order from **COMPUTE!**.

**COMPUTE! Small System Services, Inc.**

## 32 BASIC PROGRAMS FOR ATARI COMPUTERS

Chock full of educational uses, practical applications, games and graphics; each of the 32 chapters fully document a different bug-free program. \$19.95

**Dilithium Press**

## COMPUTERS FOR PEOPLE.\*™

\$7.95

**Dilithium Press**

## NO-NONSENSE BOOKS

DIS, 48K, \$225.00

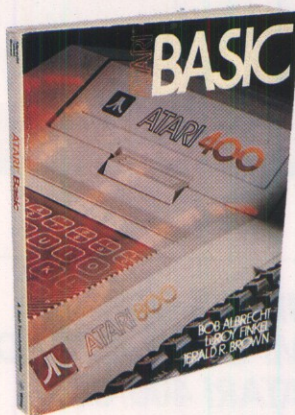
**Money Disk**

## PILOT/ADULT BEGINNERS

**Reston Publishing Co.**

## PILOT FOR KIDS

**Reston Publishing Co.**



## ATARI BASIC

by Albrecht, Finkel, & Brown. A complete introduction to programming on ATARI Computers. "The finest introduction to BASIC programming that I have ever seen"—**Microcomputing**. "Should turn a novice into a pro"—**Science & Electronics**. \$8.95

**John Wiley & Sons**

## THE ATARI SOURCEBOOK\*

\$36/YR

**Zapata Microsystems**

\*Indicates trademark of Zapata Microsystems

## SOME COMMON BASIC PROGRAMS

\$14.99

**Osborne/McGraw Hill**

## MASTER MEMORY MAP\*

This is the key to using the computer's capabilities. Explains how to PEEK and POKE values into memory for new programmers, then gives you about 15 pages of the memory locations that are the most useful. The information is condensed from manuals, newsletters, and various articles and programs. Useful even for experienced programmers as a reference. It will answer many of the questions you have about the machine. \$5.95

**Santa Cruz Educational Software**

\*Indicates trademark of Santa Cruz Educational Software

## COMPUTERS FOR KIDS

**Computers For Kids, ATARI Home Computer Edition** represents a completely new concept in programming primers. It is aimed at children in grades 1 to 5, and assumes no knowledge of algebra or variables.

Author Sally Greenwood Larsen has tested the concepts used in the book extensively at schools in Wisconsin and Iowa, and has geared this edition to take full advantage of the specific language, operations and capabilities of the ATARI Home Computer.

Softbound, 8½ x 11", 84 pages. \$3.95

**Creative Computing**

## BASIC COMPUTER GAMES

**Basic Computer Games** and **More Basic Computer Games**, edited by David Ahl, offer ATARI Home Computer users 185 different games in Microsoft Basic, all complete with program listing, sample run and description. Included are simulations such as "Hammurabi" and "Fur Trader;" strategy games such as "Awari," "Blackbox," and "Bagels;" old favorites such as "Checkers" and "Nim" and many more.

Each volume softbound, 8½ x 11", 184 pages. \$7.95 each.

**Creative Computing**

## PICTURE THIS—ATARI PILOT

**Addison-Wesley**

## 105 MICROSOFT BASIC PROGRAMS

Five volumes of Microsoft BASIC programs

- Small Business
- Education & Scientific
- Fun & Games Volumes 1 & 2
- Home Economics

\$14.95

**University Software, Inc.**

## MAGAZINES

### THE COMPUTING TEACHER

\$2.25

The Computing Teacher

### ANALOG-800 MAGAZINE

Analog Software

\$12.00/year (6 issues)

### PURSER'S MAGAZINE

\$1.00

Purser's Magazine

### SOFTSIDE MAGAZINE

\$3.00

Softside Publications

### MICROMEDIA MAGAZINE

\$12.95

Micromedia Magazine

### SOFTWARE NEWSLETTER

\$3.00

Micro Co-op

### CLASSROOM COMPUTER NEWS

single issue \$4.00  
one year \$12.00

Classroom Computer News

### EDUC. COMPUTER MAGAZINE

Educational Computer Mag.

\$12.00/year (6 issues)

## COMPUTE! MAGAZINE

THE PREMIER RESOURCE JOURNAL FOR ATARI COMPUTER USERS.

When we first started the ATARI Gazette section of COMPUTE! Magazine in the fall of 1979, we made a commitment to build a strong, ongoing users' resource. Since that beginning, we've provided thousands upon thousands of ATARI Home Computer owners with breakthroughs, innovations, practical software and, now, in-depth reviews of new and significant products. In every issue of COMPUTE! you'll find dozens of pages showing you exactly how to make better use of your computer; articles which tutor the beginner and challenge the advanced.

We're your specialists, whether your interests lie in home applications, game development, educational insights, or better business planning. Here are just a few facts to tell you more about COMPUTE!:

**We don't sell software . . . we don't sell hardware . . . We sell Information!**

In every issue of COMPUTE! you'll find clearly, cleanly printed software you can type right into your computer and use. In our first nine issues of 1981, we printed over 160 pages of ATARI Home Computer information! 62 articles, 51 programs: a monthly encyclopedia of useful information.

Our columnists and contributors include some of the foremost authors in the industry. In every issue, Bill Wilkinson and his staff, co-authors of ATARI BASIC, offer insight and hints to ATARI Home Computer owners. David Thornburg delves into the present and future of computing in his column, "Computers and Society." Our editors keep you well informed on the latest in the world of computers. You'll find tutorials on machine language for beginners, and memory maps for exploring your ATARI Computer.

**Here's just a sample of what other owners have to say about COMPUTE!**

From Deerfield, IL.: "Thanks to your magazine, I can do twice as much on my ATARI Home Computer as I could otherwise. This issue's articles 'Data on the ATARI Computer,' 'ATARI Joystick,' and 'ATARI Computer Sound Utility' should be in the BASIC Reference Manual. COMPUTE! prints the technical information we need. Please put last year's issues back into print . . ."

From Atlanta, GA.: "Your ATARI Computer articles and assembly language articles are excellent. I have really enjoyed playing Blockade. Please keep up the good work."

From Salinas, CA.: ". . . The first issue of my new subscription is worth the one year subscription price!"

#### **A Very Special Free Offer for ATARI Computer Owners:**

Subscribe to COMPUTE!, using the handy toll-free numbers listed in the index, and **we'll not only guarantee your satisfaction, but also send you our current issue FREE.** You'll receive the current copy of COMPUTE! on us, and the next twelve monthly issues. Our annual subscription price is \$20.00. With this offer, you're saving \$12.50 off the monthly newsstand price of \$2.50. If you're not completely satisfied with COMPUTE!, simply cancel your subscription and we'll cheerfully refund the unused portion.

To take advantage of our offer, **call Toll Free.** Be sure to tell the operator you want the ATARI Computer owner, thirteen-issue special. If you'd prefer to write, address your order to **COMPUTE! Magazine.**

COMPUTE! Magazine is a publication of Small System Services, Inc. This offer expires February 26, 1982. On all "bill-me" orders, there is a \$1.00 billing fee.

**COMPUTE! Small System Services, Inc.**

# ATARI COMPUTER USERS' GROUPS

## EASTERN REGION

### CONNECTICUT

ATARI COMPUTER USERS' OF  
SOUTHERN CONNECTICUT  
Bryan Lockwood, President  
112 Hawthorne Dr.  
Fairfield, CT  
(203) 372-8932

FAIRFIELD COUNTY ATARI  
COMPUTER USERS' GROUP  
Robert & Joyce Waldman  
36 Brookdale Drive  
Stamford, CT 06903  
(203) 552-3315  
(203) 322-3911

### MARYLAND

ARINC ATARI COMPUTER CLUB  
Bruce Morgenstern, President  
2551 Riva Road  
Annapolis, MD 21401  
(301) 266-4735

ATARI BALTIMORE AREA  
COMPUTER USERS' SOCIETY  
Cam Whetstone, President  
c/o Program Store  
6634 Security Blvd.  
Baltimore, MD 21207  
(301) 298-3733 (W)  
(301) 486-2609 (H)  
(301) 944-0200 (Store)

ATARI COMPUTER USERS' GROUP  
Fred Ward  
7106 Saunders Court  
Bethesda, MD 20817  
(301) 983-1990

Lee Amoss  
12621 Compromise Ct.  
Mt. Airy, MD 21771  
(301) 442-2433

ATARI SUBSIG  
Raymond Tillman, Chairman  
1323 Hallock Dr.  
Odenton, MD 21113  
(301) 621-7391

CHAFITZ ATARI COMPUTER USERS'  
GROUP  
J. Pollack  
P.O. Box 961  
Rockville, MD 20851

AURA  
George Perantonakis  
9433 Georgia Avenue  
Silver Spring, MD 20910  
(301) 588-6565

### MASSACHUSETTS

BOSTON ATARI COMPUTER USERS'  
GROUP  
Sheldon Buck, Coordinator  
Three Center Plaza  
Boston, MA 02108  
(617) 367-8080

ATARI COMPUTER USERS' CLUB  
Mike Deschenes, President  
565 Main Street  
Cherry Valley, MA 01611

### NEW JERSEY

MICRO OF MONMOUTH AND  
MIDDLESEX COMPUTER CLUB,  
ATARI COMPUTER GROUP  
Barry S. Joseph, Librarian  
10 Sherwood Rd.  
Englishtown, NJ 07726

JERSEY ATARI COMPUTER GROUP  
Dick Kushner, President  
58 Dewey Avenue  
High Bridge, NJ 08829  
(201) 582-4794

BERGAN COUNTY ATARI  
COMPUTER USERS' GROUP  
David Geller, President  
761 Wendel Pl.  
Teaneck, NJ 07666  
(201) 692-1669

THE TEANECK ATARI COMPUTER  
USERS' GROUP  
Mark Hirmes, President  
331 DeMott Avenue  
Teaneck, NJ 07666  
(201) 836-2222

### NEW YORK

ORCHARD PARK ATARI  
COMPUTERS  
Fran Russert, President  
P.O. Box 44  
Boston, NY 14025  
(716) 941-6757

COMPUTER CLUB OF THE ISLIPS  
Gregg Beasley, President  
15 Cardinal Lane  
East Islip, NY 11730

A.C.E. OF SYRACUSE  
Tom Karkowski, President  
5728 Paisley Place  
East Syracuse, NY 13057  
(315) 656-2228

MICROAGE ATARI COMPUTER  
USERS' GROUP  
Neal Eckhart  
56 High Manor Drive  
Henriette, NY 14467  
(716) 454-1700 (W)  
(716) 359-2672 (H)

SPECTRA — SEVERAL PEOPLE  
ENROLLED AT CORNELL THAT  
RESPECT ATARI  
Craig Patchett, President  
109 McGraw Place  
Ithaca, NY 14850  
(607) 273-0916

John Zigmont  
69 Westshore Drive  
Massapequa, NY 11758  
(516) 541-9658

NASSAU/SUFFOLK ATARI  
COMPUTER USERS' GROUP  
Lee Jacknow, President  
30 Clafford Lane  
Melville, NY 11749  
(516) 549-9141

SOCIETY OF ATARI PROGRAMMERS  
SOAP  
Martin Kaye  
4 Park Avenue  
New York, NY 10016  
(212) 684-6197 (H)  
(212) 889-7100 X25 (W)

MICROAGE COMPUTER STORE  
ATARI COMPUTER USERS' GROUP  
Frank Hacknauer  
MicroAge Computer Store  
1707 Monroe  
Rochester, NY 14608  
(716) 244-9000

**GREATER NEW YORK ATARI  
COMPUTER USERS' GROUP**  
Louis Plaut, President  
c/o Discount Computer Systems  
Division of Decorators Alley, LTD  
20 Lumber Road  
Roslyn, NY 11576  
(516) 484-9548

**CAPITAL DISTRICT ATARI  
COMPUTER USERS' GROUP**  
Richard A. Paniccia  
c/o The Computer Room  
1694 Central Avenue  
Albany, NY 12205  
(518) 869-3818

**COMPUTER RESOURCE**  
Tim Clifford  
5560 Main Street  
Williamsville, NY 14221  
(716) 633-9510

Frank Lombardo  
Computer Resource  
5560 Main Street  
Williamsville, NY 14221  
(716) 633-9510

## **PENNSYLVANIA**

**PHILADELPHIA AREA COMPUTER  
SOCIETY**  
Bill Kosske  
852 Haws Avenue  
Morristown, PA 19401  
(215) 539-0700 X243 (W)  
(215) 275-8607 (H)

**PITTSBURGH ATARI COMPUTER  
ENTHUSIASTS**  
Ronald J. Quinlan, President  
466 Rosewood Drive  
Pittsburgh, PA 15236  
(412) 655-3046

**BERKES/READING AREA COMPUTER  
ENTHUSIASTS**  
Leo Hood, President  
Contact: Paul Adams  
Box 210A, RD 4  
Reading, PA 19606  
(215) 929-2637 After 4:00 EST

**SOUTHEASTERN PENNSYLVANIA  
ATARI COMPUTER ENTHUSIASTS**  
John Nolan  
1 Mercer Street  
Warminster, PA 18974  
(215) 441-5239

**GENISIS**  
Marc D'llineira  
62 N. 61st St.  
Philadelphia, PA 19139  
(215) 471-3191

## **VIRGINIA**

Tom Bartelt, President  
c/o Warner Amex Cable of Reston  
P.O. Box 2400  
Reston, VA 22090  
(703) 471-1924

**CARDINAL COMPUTING GROUP**  
Fred Malik, President  
12166 Queens Brigade Drive  
Fairfax, VA  
(703) 830-2132

## **WASHINGTON D.C.**

**FEDERAL EMPLOYEES ATARI  
COMPUTER USERS' GROUP**  
Frank Huband, President  
Rm. 1240  
National Science Foundation  
Washington, D.C. 20550  
(202) 357-7829

Roger Nicholson  
917 R Street N.W.  
Washington, D.C. 20001  
(202) 332-7751 (H)  
(202) 254-9726 (W)

## **SOUTHERN REGION**

### **ALABAMA**

**DIXIE ATARI COMPUTER  
ENTHUSIASTS**  
John Todd  
1620-A Fisher Road  
Gunter AFB, AL 36115  
(205) 271-0938 (H)  
(205) 279-4396 (W)

H. R. ELEVINS  
514 Jefferey Drive NW  
Huntsville, AL 35806  
(205) 837-2437 (H)  
(205) 453-3809 (W)

### **ARKANSAS**

OBU  
**ATARI COMPUTER USERS' GROUP**  
Bryan Harmon, President  
Box 689  
OUACHITA Baptist University  
Arkadelphia, AR 71923  
(501) 246-6238

## **FLORIDA**

**CORAL SPRINGS ATARI COMPUTER  
USERS' GROUP**  
Mark Pallans, President  
10122 N.W. 3rd Place  
Coral Springs, FL 33065  
(305) 763-8417

**GAINESVILLE INDEPENDENT MICRO  
USERS' GROUP**  
Bill Wagner  
1510 NW 35th Terrace  
Gainesville, FL 32601  
(904) 378-0192 Bill Brachhold

**WEST BROWARD ATARI  
COMPUTER USERS' CLUB**  
c/o Barry Nadler  
2370 NW 87th Lane  
Sunrise, FL 33322  
(305) 741-7128

**TAMPA BAY AREA ATARI  
COMPUTER USERS' GROUP**  
Randal Gibson  
812 West River Drive  
Tampa, FL 33617  
(813) 988-4503

**ATARI BOOSTER LEAGUE EAST**  
Hadley Nelson  
2220 Coventry Drive  
P.O. Box 1172  
Winter Park, FL 32789

### **KENTUCKY**

**ATARI EXCHANGE**  
Steve Hinkle, President  
5310 Juanita Lane  
Louisville, KY 40272  
(502) 937-2667

### **LOUISIANA**

**THE NEW ORLEANS ATARI  
COMPUTER USERS' GROUP**  
Paul Strauss, President  
8223 Plum St.  
New Orleans, LA 70118  
(504) 861-4167

**BATON ROUGE ATARI COMPUTER  
USERS' GROUP**  
Stanley Brohn, President  
Computer Electronics  
1955 Dallas Dr.  
Baton Rouge, LA 70806  
(504) 924-8066

**BATON ROUGE AREA ATARI  
COMPUTER USERS' GROUP**  
Randy Peairs, President  
Route 2  
Box 134  
Zachary, LA 70791  
(504) 654-5405

## **NORTH CAROLINA**

Randy Thornberg  
1416 Suterland Rd.  
Cary, NC 27511  
(919) 362-5037 (H)  
(919) 549-5272 (W)

## **OKLAHOMA**

ATARI COMPUTER CLUB OF  
OKLAHOMA CITY  
Greg Leslie, President  
10944A N. May Ave.  
Oklahoma City, OK 73120  
(405) 751-2796

TINKER ATARI COMPUTER  
ENTHUSIASTS  
Rickey L. Wails, President  
5004 Twining Drive  
Tinker AFB, OK 73145  
(405) 733-4910

TULSA ATARI GROUP  
Eric Lockhart, President  
8621 E. 66th Place South, Apt. D  
Tulsa, OK 74133  
(918) 252-1604 (W)  
(918) 252-0862 (H)

## **TENNESSEE**

ATARI COMPUTER USERS' GROUP  
OF KNOXVILLE  
Video Vision  
Brad Weil, President  
1645 Downtown West Blvd.  
Knoxville, TN 37919  
(615) 690-8800

## **TEXAS**

AUSTIN ATARI COMPUTER  
ENTHUSIASTS  
David Mann, President  
7108 Spurlock  
Austin, TX 78731  
(512) 346-4940 (H)  
(512) 258-9811 X240 (W)

HOUSTON ATARI COMPUTER  
ENTHUSIASTS (HACE)  
William Frank, President  
5310 Jackwood  
Houston, TX 77096  
(713) 827-9895 (W)  
(713) 661-1743 (H)

NORTH TEXAS ATARI COMPUTER  
USERS' GROUP  
Ron Hunter, President  
Micro-Age Computers  
1220 Melbourne Rd.  
Hurst, TX 76053  
(817) 284-3413

ATARI COMPUTER USERS' GROUP  
OF DALLAS  
Phil Shaffer, President  
3708 Big Horn Trail  
Plano, TX 75075  
(214) 596-3616

ALAMO AREA ASSOCIATION FOR  
ADVANCED ATARI APPLICATIONS  
Jay Holmes  
642-A West Rhapsody  
San Antonio, TX 78216  
(512) 340-1471

## **MIDWESTERN REGION**

### **INDIANA**

Rob Estka  
10302 Indian Lake S. Drive  
Indianapolis, IN 46236  
(317) 545-6646

VIC ZINN MUSIC GROUP  
Mike Malan  
83 South 9th  
Noblesville, IN 46060  
(317) 773-4445

### **ILLINOIS**

ATARI COMPUTER USERS' GROUP  
OF CHICAGO  
Larry Hitz, President  
15 Mohawk Drive  
Clarendon Hills, IL 60514  
(312) 727-4206

### **IOWA**

GREATER DES MOINES ATARI  
USERS' GROUP  
Ernie Runyon  
RR#1 Box 7CC  
Prole, IA 50229  
(515) 981-4169

WATERLOO ATARI COMPUTER  
USERS  
Eric Radius, President  
Ed Fletcher, Secretary/Librarian  
4229 Suburban Drive  
Waterloo, IA 50702

### **MICHIGAN**

MICHIGAN ATARI COMPUTER  
ENTHUSIASTS  
Arlan Levitan, President  
P.O. Box 2785  
Southfield, MI 48037  
(313) 424-1330 (W)  
(313) 399-8973 (H)

## **MINNESOTA**

TWINCITY ATARI COMPUTER  
INTEREST GROUP  
Steve Crowley, President  
Contact: Mike Doleman, Secretary  
6824 Queen Ave. S.  
Minneapolis, MN 55423  
(612) 861-1893

## **MISSOURI**

AURA  
Susan Glasgow, President  
c/o Back to Basic Computer Center  
43 Cross Keyes Shopping Center  
Florissant, MO 63033  
(314) 225-8147 (H)

## **NEBRASKA**

OMAHA ATARI COMPUTER  
FEDERATION  
Glen Flint, President  
14219 Pierce Plaza #41  
Omaha, NE 68144  
(402) 333-7953

Jim Simpson  
6901 S. 32nd Avenue  
Omaha, NE 68147  
(402) 733-5780 After 3:00 PST  
(402) 294-2749 (W)  
Larry Kelly, President

## **OHIO**

ATARI COMPUTER ENTHUSIASTS  
OF CLEVELAND  
Bruce Frumker  
Cleveland Museum of Natural History  
Wade Oval — University Circle  
Cleveland, OH 44106  
(216) 231-4600

ATARI COMPUTER CLUB OF  
TOLEDO  
Bob Rusch, President  
1709 Greenwood  
Toledo, OH 43605  
(419) 693-8669 After 3:00 PST

## **WISCONSIN**

MADISON ATARI COMPUTER USERS  
Steve Hansen, President  
3313 University Avenue  
Madison, WI 53705  
(608) 233-2026

## WESTERN REGION

### ARIZONA

#### DESERT ATARI COMPUTER USERS' GROUP

Gary Frederick, President  
614 W. McNeil  
Phoenix, AZ 85041  
(602) 276-1347 (H)  
(602) 264-7241 (W)

#### COCHISE COMPUTER CLUB — ATARI GROUP

Bill Starr, President  
134 Columbo Avenue  
Sierra Vista, AZ 85635  
(602) 459-1034

### CALIFORNIA

#### ATARI BAY AREA COMPUTER USERS' SOCIETY

Jim Capparel, President  
297 Missouri Street  
San Francisco, CA 94107  
(415) 863-2340

#### WEST VALLEY ATARI COMPUTER USERS' GROUP

George Barti, President  
20213 Parthenia Street  
Canoga Park, CA 91306  
(213) 998-0769

#### ORANGE COUNTY ATARI COMPUTER ASSOCIATION

Rich Moshenko, President  
12271 Arrowhead Street #12  
Stanton, CA 90680  
(213) 593-5128 (W)  
(714) 537-0702 (H)

Jerry Bransford  
2301 Artesia Blvd.  
Redondo Beach, CA 90277  
(213) 328-0770 (W)  
(213) 325-6204 (H)

#### FRESNO ATARI COMPUTER SECTOR

Gary Murphy, President  
On-Line  
5636 N. Blackstone  
Fresno, CA 93710  
(209) 432-4324

Ron Fortier  
Foothill Computer Center  
949 West Foothill  
Upland, CA 91786  
(714) 626-3324 (H)  
(714) 985-2101 (W)

#### SAN DIEGO ATARI COMPUTER ENTHUSIASTS

Dick Hiatt, President  
5353 Baltimore Dr. #39  
La Mesa, CA 92041  
(714) 277-6700 X218 (W)  
(714) 463-8460 (H)

#### LIVERMORE ATARI COMPUTER USERS' GROUP

Martin Carmichael  
c/o Lawrence Livermore Labs  
Box 808  
L-402  
Livermore, CA 94550  
(415) 422-4503

#### SOUTH BAY ATARI COMPUTER ENTHUSIASTS

Gerald Bransford, President  
26130 S. Narbonne Avenue #137  
Lomita, CA 90717  
(213) 325-6204

#### LOMPOC/SANTA MARIA ATARI COMPUTER USERS' GROUP

Lynn R. Clock, President  
215 Pegasus Ave.  
Lompoc, CA 93436  
(805) 733-2526

#### BAY AREA ATARI COMPUTER USERS' GROUP

Clyde Spencer  
12345 El Monte Road  
Los Altos Hills, CA 94022  
(415) 965-9355

#### MONTEREY BAY ATARI COMPUTER GROUP

Bill Pitt  
2711 Ransford  
Pacific Grove, CA 93950  
(408) 373-7177

#### PASADENA ATARI COMPUTER USERS' GROUP

Ron Dias  
Shank Associates  
16133 Ventura Blvd.  
Suite 200  
Encina, CA 91436  
(213) 981-2595

#### GOLETA/SANTA BARBARA ATARI COMPUTER USERS' GROUP

Ken Smith  
365 Hillsboro Way  
Goleta, CA 93017  
(805) 968-4044 (H)  
(805) 687-6405 (W)

#### ACCESS

Bill Anderson, President  
P.O. Box 1354  
Sacramento, CA 95806  
(916) 445-3314

Parvez Ruttonsha  
On-Line Computer Center  
Meadow Park Plaza  
22811 Hawthorne Blvd.  
Torrence, CA 90505

### COLORADO

#### STARFLEET

Robert Gordon, President  
6191 South Forest Court  
Littleton, CO 80121  
(303) 733-0563 (W)

#### THE ATARI COMPUTER CLUB

Ed Fason, President  
5500 Troy Street  
Denver, CO 80239  
(303) 371-6614 (H)  
(303) 770-2345 X249 (W)

#### FT. COLLINS AREA ATARI COMPUTER USERS' GROUP

Leroy Castertine, President  
(Poor Richard's)  
204 West Laurel Street  
Ft. Collins, CO 80521  
(303) 221-1776

### OREGON

#### PORTLAND ATARI CLUB

Jim Leiterman, President  
P.O. Box 1692  
Beaverton, OR 97075  
(503) 645-0363

#### ATARI COMPUTER ENTHUSIASTS

Stacy Goff, President  
3662 Vine Maple Drive  
Eugene, OR 97405  
(503) 687-4075

#### MEDFORD AREA USERS' GROUP

Jim Caldwell, President  
1420 Summit Loop  
Grants Pass, OR 97526  
(503) 479-1761

Joe Potter  
J. Harvey  
3295 Triangle Drive  
Salem, OR 97302

### UTAH

#### ATARI COMPUTER ENTHUSIASTS OF SALT LAKE

Richard Lock, President  
Quality Technology  
470 E. 2nd South  
Salt Lake City, UT 84111  
(801) 521-5050

#### CENTRAL UTAH USERS' GROUP

David Whittle, President  
1849 N. 200W #248  
Provo, UT 84604  
(801) 377-4988

## WASHINGTON

### SEATTLE/PUGET SOUND ATARI COMPUTER ENTHUSIASTS

John Allen  
3420 Glacier Peak  
Everett, WA 98204  
(206) 337-0168

### ATARI USERS' GROUP OF SPOKANE

George H. Shields, President  
726 W. 21st Avenue  
Spokane, WA 99203  
(509) 624-2626

### YAKIMA ATARI SYSTEM HOBBYISTS

Dr. Dan Peterson, President  
c/o Rob Roy Computers  
1109 West Yakima Avenue  
Yakima, WA 98902  
(509) 575-7704

## INTERNATIONAL

### HOLLAND

P. L. Veger  
Strawinskylaan 26  
2102 CP Heemstede  
Holland

### PANAMA CANAL

#### PANAMA CANAL ATARI COMPUTER USERS GROUP

Dr. Mel Boreham, President  
PSC Box 417  
APO Miami, FL 34008

### CANADA

#### HAMILTON, BURLINGTON, OAKVILLE ATARI COMPUTER USERS' GROUP

1305 Ontario Street, Apt. 1507  
Burlington, Ontario  
Canada L7S 141  
(416) 632-8099 (H)  
(416) 632-6810 (W)

### AUSTRALIA

#### MELBOURNE ATARI COMPUTER USERS' GROUP

Gerald McCaughey, President  
P.O. Box 246  
Northcote, Victoria  
Australia 3070  
61-348-12215

## A. Douglas Davis

Physics/IEU  
Charleston, IL 61920  
(217) 345-4753

16

## ADDCOM Electronics, Inc.

2895 Bedford Avenue  
Placerville, CA 95667  
(916) 626-3351

25, 29, 35, 40

## Addison-Wesley

46

## Adventure International

507 East Street  
Longwood, FL 32750  
(305) 862-6917

10, 11

## Alphacom, Inc.

2323 S. Bascom Avenue  
Campbell, CA 95008  
(408) 559-8000

29

## Analog Software

P.O. Box 23  
Worcester, MA 01603  
(617) 892-3488

10, 47

## Android Amusement Center

2650 Myrtle Avenue B-7  
Monrovia, CA  
(213) 445-5330

40

## Artsci, Inc.

10432 Burbank Blvd.  
North Hollywood, CA 91601  
(213) 985-2922

10, 11, 13

## Asinc

17691 A. Mitchell N  
Irvine, CA 92714  
(714) 979-0556

35

## Automated Simulations, Inc.

P.O. Box 4247  
Mountain View, CA 94040  
(415) 964-8021

6, 14

## Avalon Hill

### Microcomputergames

4517 Harford Road  
Baltimore, MD 21214  
(301) 254-9200  
(800) 638-9292

4, 5, 8, 9, 12, 13

## Avatar Software

691 Corinthia  
Milpitas, CA  
(408) 263-1376

1, 7, 25, 40

## Axlon Incorporated

170 N. Wolf Road  
Sunnyvale, CA 94086  
(408) 730-0216

35

## Basic Systems Corporation

2350 De La Cruz Blvd.  
Santa Clara, CA 95050  
(408) 727-1800

43

## Belvis Custom Tables, Inc.

P.O. Box 2296  
Florence AL 35630  
(205) 766-6497

43

## BYTM Systems, Inc.

389 Fifth Avenue, Suite 400  
New York, NY 10016

44

## CDS Corporation

695 E. Tenth North  
Logan UT 84321  
(800) 453-2708

11

## C.E. Software

238 Exchange Street  
Chicopee, MA 01013  
(413) 592-4761

3, 7, 11, 14

## California Microlink Corp.

2078-C Walsh Avenue  
Santa Clara, CA 95050  
(408) 988-6437

27, 32, 35

## The Casemaker

13715 Quito Road  
Saratoga, CA 95070  
(800) 543-3000

37

## Classroom Computer News

P.O. Box 266  
Cambridge, MA 02138  
(617) 923-8595

47

## The Code Works

P.O. Box 550  
Goleta, CA 93116  
(805) 683-1585

13

## Cognitive Electronics Lab

857 S. Gesser, Suite 401  
New Braunfels, TX 78130  
(713) 975-8509

24

## Color Computer Concepts

1275 Perry Drive  
Idaho Falls, ID 83401  
(208) 529-9738

3, 24

## Compumax, Inc.

P.O. Box 1139  
Palo Alto, CA 94302  
(415) 854-6700

1, 23

## CompuServe

P.O. Box 20212  
Columbus, OH 43220  
(800) 848-8990

23

## COMPUTE! Magazine

P.O. Box 5406  
Greensboro, PA 27403  
(800) 662-2444  
(800) 345-8112

46, 47

## Computeak

7000 Franklin Blvd.  
Sacramento, CA 95823  
(916) 392-9724

43

## The Computing Teacher

Dept. of Communication &  
Information Science  
University of Oregon  
Eugene, OR 97403

47

## Computer Case Company

5650 Indian Mound Court  
Columbus, OH 43213  
(614) 868-9464

37

## The Computer Kitchen

P.O. Box 70524  
Sunnyvale, CA 94086  
(408) 946-1722

25

## Computer Magic, Ltd.

176 Main Street  
Port Washington, NY 11050  
(516) 883-0094

10, 12

## Conduit

Lindquist Center P.O. Box 388  
Iowa City, IA 52244

22

## Corvus Systems, Inc.

2029 Otolle Avenue  
San Jose, CA 95131

27, 28, 34, 35

## Creative Computing

39 E. Hanover Avenue  
Morris Plains, NJ 07950  
(201) 540-0445

5, 7, 10, 11, 14, 15, 16, 45, 46

## Datasoft Inc.

19519 Business Center Drive  
Northridge, CA 91324  
(213) 701-5161

2, 4, 24, 25, 40

## Dilithium Press

11000 SW 11th Street, Suite E  
Beaverton, OR 97005  
(800) 547-1842

45, 46

## Discovery Games

936 W. Highway 36  
St. Paul, MO 55113  
(612) 488-6843

5, 7, 11

## Dorsett Educational Software

Goldsby Airport Box 1226  
Norman, OK 73078  
(405) 288-2300

19, 21, 22

**Dow Jones & Company**

P.O. Box 300  
Princeton, NJ 08540  
(800) 257-5114

23

**Dr. Daley's Software**

Warer Street  
Darby, MT 59829  
(406) 821-3924

17

**Dynacomp, Inc.**

1427 Monroe Avenue  
Rochester, NY 14618  
(716) 442-8960

1, 2, 3, 4, 5, 11, 14, 15, 22, 24

**Edu-Ware Services, Inc.**

22222 Sherman Way  
Canoga Park, CA 91303  
(213) 346-6783

21

**Educational Computer Magazine**

P.O. Box 535  
Cupertino, CA 95015  
(408) 252-3224

47

**Escon Products**

12919 Alcosta Blvd.  
San Ramon, CA 94583  
(415) 820-1256

35

**Furn-Wood Manufacturing, Inc.**

5664 S.W. Carman Drive  
Portland, OR 97034  
(503) 636-1991

43

**Gusdorf Corporation**

6900 Manchester Avenue  
St. Louis, MO 63143  
(314) 647-1207

43

**H&E Computronics, Inc.**

50 N. Pascack Rd.  
Spring Valley, NY 10977  
(914) 425-1535

3

**H.E.L. Laboratories, Inc.**

95A Halls Croft  
Freehold, NJ 07728  
(212) 757-3641

2, 10, 22

**Hayes Microcomputer Products**

5835A Peachtree Corners East  
Norcross, GA 30092

27, 32

**Hi-Ly Creations**

P.O. Box 1282  
Fair Oaks, CA 95628

43

**High Technology Software Products**

P.O. Box 14665/2201 NE 63  
Oklahoma City, OK 73113  
(405) 478-2105

2, 18, 19

**Horizon Simulations**

107 E. Main St.  
Medford, OR 97501  
(503) 779-0078

7

**Houston Instruments**

8500 Camerson Road  
Austin, TX 78753  
(512) 835-0900

24, 35

**Inmac Corporation**

2465 Augustine Drive  
Santa Clara, CA 95051  
(408) 737-7777

29, 37, 40, 42

**International Business Forms**

E. 15205 14th  
Veradale, WA 99037  
(509) 922-4428

38

**Intersell**

465 Fairchild Drive Suite 214  
Mountain View, CA 94040

30, 31, 32

**JMH Software of Minnesota, Inc.**

4850 Wellington Lane  
Minneapolis, MN 55442  
(612) 559-7208

20, 21

**Johnson Software**

1200 Dale Avenue  
Mountain View, CA 94040

16, 17, 18, 24

**Kinetic Designs**

401 Monument Road  
Jacksonville, FL 32211  
(904) 725-0435

8

**Krell Software**

21 Millbrook Drive  
Stony Brook, NY 11790  
(516) 751-5139

15

**The Lesjay Co.**

47-31 35th street  
Long Island City, NY 11101

43

**LJK Enterprises**

P.O. Box 10827  
St. Louis, MO 63129  
(314) 846-6124

2, 3, 4, 26

**Macrotronics Inc.**

1125 N. Golden State Blvd.  
Turlock, CA 95380  
(800) 344-7493

17, 30, 26

**The Main Manufacturing Co.**

P.O. Box 408  
Nashua, NH 98052  
(800) 258-1768

43

**Marvel Metal Products Co.**

3843 West 43rd Street  
Chicago, IL 60632  
(312) 523-4804

43

**Maura Engineer, Inc.**

Rt. 1, Box 133  
Mount Shasta, CA 96067  
(916) 926-4406

32

**Micro Age Computer Store**

1707 Monroe Avenue  
Rochester, NY 14618  
(716) 244-9000

1, 2,

**Micro Co-op**

P.O. Box 432  
West Chicago, IL 60185  
(312) 231-0912

47

**Micro Media Magazine**

Box 402286  
Garland, TX 75040  
(214) 238-1054

47

**The Microperipheral Corp.**

2643 151st Place N.E.  
Redmond, WA 98052  
(206) 881-7544

29

**Money Disk**

P.O. Box 1531  
Richland, WA 99352  
(509) 943-0198

17, 23, 46

**Mosaic Electronics**

P.O. Box 748  
Oregon City, OR 97045  
(503) 655-9574

9, 12, 24

**MPC Peripherals Corp.**

9424 Chesapeake Drive  
San Diego, CA 92123  
(714) 278-0630

26, 27, 32, 35, 39

**MPI**

4426 South Century Drive  
Salt Lake City, UT 84107  
(801) 263-3081

29, 35, 39

**Non-Pareil Industries**

1890 Marietta Blvd.  
Atlanta, GA 30318  
(404) 352-1522

43

**Optimized Systems Software, Inc.**

10379 Lansdale Ave.  
Cupertino, CA 95014  
(408) 446-3099

25, 26

**Osborne/McGraw Hill**

630 Bancroft Way  
Berkeley, CA 94710  
(415) 548-2805

45, 46

**O'Sullivan Industries**

19th and Gulg St.  
Lamar, MO 64759

43

**Peripherals Plus**

39E Hanover Avenue  
Morris Plains, NJ 07950  
(201) 540-0445

32

**Personal Software, Inc.**

1330 Bordeaux Drive  
Sunnyvale, CA 94086  
(408) 745-7841

5, 23

**Prentice Corporation**

266 Caspian Drive  
Sunnyvale, CA 94086  
(408) 734-9810

27

**Program Design, Inc.**

11 Idar Court  
Greenwich, CT 06830  
(203) 661-8799

8, 9, 12, 16, 17, 18, 19, 21, 22

**Purser's Atari Magazine**

P.O. Box 466  
El Dorado, CA 95623  
(916) 622-5288

47

**Renaissance Technology Corp.**

3347 Vincent Road  
Pleasant Hill, CA 94523  
(415) 930-7707

29, 39

**Reston Publishing Company**

11480 Sunset Hills Road  
Reston, VA 22090  
(703) 437-8900

45, 46

**RKS Industries**

208 Mt. Hermon Road, Suite 2  
Scotts Valley, CA 95066

41

**Santa Cruz Educational Software**

5425 Jigger Drive  
Soquel, CA 95073  
(408) 476-4901

2, 3, 15, 16, 24, 46

**Science Research Assoc. Inc.**

155 N. Wacker Drive  
Chicago, IL 60606  
(800) 621-0664

16, 17, 18

**Scitor Corporation**

710 Lakeway, Suite 290  
Sunnyvale, CA 94086  
(408) 730-0400

1

**Sirco Manufacturing**

1919 North Avenue West  
Missoula, MT 59801  
(406) 721-4800

44

**Softprotex**

P.O. Box 271-J  
Belmont, CA 94002

45

**Softside Publications**

6 South Street  
Milford, NH 03055  
(603) 673-0585

9, 47

**Softswap**

333 Main Street  
Redwood City, CA 94063  
(415) 363-5472

17, 18

**Source Telecomputing Corp.**

1616 Anderson Road  
McLean, VA 22102  
(703) 734-7500

23

**Sound Concepts**

P.O. Box 209  
Provo, UT 84603  
(801) 375-7333

37

**SRW Computer Components**

18009-D Sky Park Circle  
Irvine, CA 92714  
(714) 557-7060

38, 43

**Street Electronics Corp.**

3152-C E. La Palma  
Anaheim, CA 92806  
(714) 632-9950

35

**Sublogic Communications Corp.**

713-Edebrook Drive  
Champaign, IL 61820  
(217) 359-8482

9, 13

**Survival Software**

3033 La Selva, Apt. B306  
San Mateo, CA 94403  
(415) 349-0967

5

**Synapse Software**

820 Coventry Road  
Kensington, CA 94707  
(415) 527-7751

2, 9, 25

**Synergistic Software**

5221 120th Avenue S.E.  
Bellevue, WA 98006  
(206) 226-3216

9

**Systems Furniture Co.**

13900 S. Figueroa St.  
Los Angeles, CA 90061  
(213) 533-1212

43

**T.H.E.S.I.S.**

P.O. Box 147  
Garden City, MI 48135  
(313) 595-4722

18

**Tab Products Company**

2690 Hanover Street  
Palo Alto, CA 94304  
(415) 493-5790

43

**Terrapin, Inc.**

678 Massachusetts Ave.  
Cambridge, MA 02139  
(617) 492-8816

41

**Trendcom**

480 Oakmead Parkway  
Sunnyvale, CA 94086  
(408) 237-0747

35

**Unicolor**

7200 Huron River Drive  
Dexter, MI 48130  
(313) 426-4646

37, 38

**United Software of America**

750 Third Avenue  
New York, NY 10017  
(212) 682-0347

8, 24

**University Software**

P.O. Box 4544  
Stanford University, CA 94305  
(415) 854-6701

1, 10, 15, 23, 46

**Versa Computing Inc.**

3541 Old Conejo Road, Suite 104  
Newbury Park, CA 91320  
(805) 499-4800

12, 24, 35

**Visible Computer Supply Corp.**

1615 Stockton St.  
Lodi, CA 95240

43

**Votrax**

500 Stephenson Way  
Troy, MI  
(313) 588-0341

33

**Watanabe Instruments Corporation**

3186-D Airway Avenue  
Costa Mesa, CA 92626  
(714) 546-5344

33, 35

**West Coast Consultants**

1775 Lincoln Blvd.  
Tracy, CA 95376  
(209) 835-1780

25

**West Coast Software**

4929 Collwood Blvd., #021  
San Diego, CA 92115  
(714) 286-3207

4

**John Wiley and Sons**

605 Third Avenue  
New York, NY 10158  
(212) 850-6000

45, 46

**Zapata Microsystems**

P.O. Box 401483  
Garland, TX 75040  
(214) 494-4433

1, 2, 8, 13, 17, 23, 46

## SOFTWARE

### PERSONAL FINANCE

Budget 1  
 Datagraph 1  
 Family Expenses 1  
 Home Economics 1  
 Number Graph 1  
 Personal Banker 1  
 Personal Finance 1  
 Personal Finance and Record Keeping 1  
 Personal Finance System 1  
 Personal Loan Analysts 1

### RECORD KEEPING

Automatic Dialer 2  
 Bob's Business 3  
 CCA Data Management 3  
 DFILE 2  
 Data Handler 2  
 Data Perfect 3  
 File Manager 800 2  
 LJK Utility Mail Merge 2  
 Mail List 2  
 Mail List 2.2 2  
 Mailing List Version 2.0 2  
 Mailing List Version 1.0 2  
 Mini Database/Dialer 2  
 200 Year Calendar 2

### COMMUNICATIONS AND INFORMATION

Audible Disassembler 3  
 Decision Maker 3  
 Intelink 3

### COMPUTER INFORMATION SERVICES

Dow Jones News/Retrieval Service 23  
 Compu-Serve Information Service 23  
 The Source, America's Utility Service 23

## WORD PROCESSING

Business Pac 100 3  
 Form Letter System 4  
 Letter Perfect 4  
 Masterpac 3  
 Mini Word Processor 3  
 Personal Editor 3  
 Text Wizard 4  
 The Letter Writer 3

## GAMES

Adventure Series 10  
 Adventure on a Boat 9  
 Alpha Fighter 15  
 Angle Worm 10  
 Artillery 9  
 Astro Quotes 8  
 Avoid 10  
 B-1 Nuclear Bomber 12  
 Backgammon 11  
 Battle Warp 4  
 Billiards 14  
 Blackjack 10  
 Blockade 13  
 Bowling 9  
 Bridge 2.0 14  
 Captivity 9  
 Checker King 5  
 Chennault's Flying Tigers 5  
 Comp 'Othello 5  
 Computer Acquire 8  
 Conflict 2500 4  
 Cribbage 11  
 Crush, Crumble and Chomp! 6  
 Crystals 14  
 Cypher Bowl 13  
 Darts 14  
 Darts & Tilt 5  
 Deflection 10  
 Dodge Racer 9  
 Dominoes 15  
 Dominoes and Cribbage 14  
 Empire of the Overmind 5  
 Fun & Games (5 Games) 10

Five-of-a-Kind 8  
 Flight Simulator 5  
 Galactic Empire 11  
 Galactic Trader 10  
 Games Pack I 14  
 Games Pack II 11  
 Giant Slalom 14  
 Gomuku 11  
 Ghostly Manor 13  
 Hangword  
 Harmonic 11  
 Haunted House 7  
 Hearts 1.5 14  
 Helicopter Battle 7  
 Horse Racing 14  
 Horsecword Derby 12  
 Intruder Alert 15  
 Invasion Orion 6  
 Iridis #1 13  
 Iridis #2 13  
 Jagdstaffel 11  
 Kayos 10  
 Keno 14  
 Kross 'n Quotes 8  
 Light/Bolts and React 14  
 Lords of Karma 9  
 Lunar Lander 11  
 Major League Baseball 8  
 Masters Golf 9  
 Microchess 5  
 Midway Campaign 4  
 Migs & Messerschmitts 7  
 Mind Beggars I 12  
 Minicrossword 12  
 Monarch 14  
 Moonprobe 5  
 Mountain Shoot 10  
 Movie Theme 10  
 Music Game 7  
 North Atlantic Convoy Raider 12  
 Nominos Jigsaw Puzzle 11

Nukewar 9  
 Odyssey in Time 15  
 Original Adventure 11  
 Outdoor Games 7  
 Planet Miners 4  
 Poker Party 5  
 Poker Solitaire 10  
 Pool 5  
 Pool, Snooker and Billiards 7  
 Pursuit 13  
 Race-in-Space 10  
 Raf: Battle of Britain 5  
 Rescue at Rigel 6  
 Reversi 10  
 Ricochet 14  
 Road Race 13  
 S811 Hangword 12  
 Safari 11  
 Sammy the Sea Serpent 8  
 Satans Satellite 4  
 Sea Battle 8  
 Shadow Hawk One 7  
 Shooting Gallery 10  
 Space Adventure Pak 8  
 Space Tilt 15  
 Star Trek 3.5 11  
 Star Warrior 6  
 Startrek 15  
 Stocks and Bonds 12  
 Stud Poker 11  
 Sunday Golf 10  
 Super La Mans 13  
 Survival Adventure 8  
 Supermaster 14  
 Superstar Baseball & All-Time Superstar Baseball 15  
 Tag 7  
 Tanktics 13  
 Target Blockade 4  
 Teachers Pet I 5  
 Temple of Apshai 6  
 The Black Forest 13  
 The Datestones of Ryn 6  
 The Mad Marble 11

The Quest 5  
 The Sword of Zedek 15  
 Thunder Island 10  
 Tilt 14  
 Time Traveler 15  
 Tractor Beam 7  
 Tribomb 10  
 Triple Blockade 11  
 Trucker & Streets of the City 10  
 Valdez 15  
 War at Sea 11  
 Warlocks Revenge 9  
 Winged Samurai 11  
 Word Search/French 12  
 Word Search/Geography 12  
 Word Search/Spanish 12  
 World Series Baseball 9  
 Zogar 7

## EDUCATION

ABC's 20  
 Addition with Carrying 19  
 Advanced Air Traffic Controller 16  
 Alphabetize 20  
 Alexander the Great 15  
 Analogies 21  
 Associative Idea Generator 16  
 Auto Mechanics 21  
 Bagels 17  
 Bagels Supreme 20  
 Bingo 17  
 Bookshelf 20  
 Bourreau 17  
 Calendar 20  
 Carpentry 19  
 Cash Register 19  
 Casino I 18  
 Catapult 16  
 Chem Lab Simulation 1 19  
 Chem Lab Simulation #1 22  
 Chem Lab Simulation 3 19  
 Chem Lab Simulation 4 19  
 Concentration 17  
 Codebreaker 18  
 Code Word 22  
 College Board SAT Preparation Series 15  
 Compu-Read 3.0 21  
 Compu-Math Fractions 21  
 Computer Drill and Instruction A 16

Computer Drill and Instruction B 16  
 Computer Drill and Instruction C 16  
 Computer Discovery 17  
 Computation 18  
 Construction 19  
 Cribbage 18  
 Curve Program 25  
 Depreciation 17  
 Dictionary Use 20  
 Digital Electronics 21  
 Do It Yourself Spelling 16  
 Drill and Instruction Phonetics 18  
 Education and Scientific (7 Programs) 18  
 Fancy Rose 17  
 First Aid Safety 21  
 Fishing for Homonyms 18  
 General Shop Practice 19  
 Geography 17  
 Guessword! 18  
 Hangman for One 17  
 Health Services Career 21  
 Hidden Words 18  
 Ind. Solid State Electronics 19  
 Kids' 1 16  
 Kids' 2p 16  
 Lab in Cognition and Perception 22  
 Legacy from Beyond 19  
 Let's Spell 19  
 Look Ahead 17  
 Management Simulator 22  
 Math 21  
 Math Duel/Basic Math 22  
 Math Electronics 22  
 Math Facts Level I 18  
 Math Facts Level II 18  
 Math Facts Level III 18  
 Math Football 18  
 Math - Counting 21  
 Math - Diving Facts 20  
 Math - Number Sequence 20  
 Math - Numerical Names 21  
 Math - Place Value 20  
 Math - Quiz 17  
 Math - Race Car Facts 21  
 Math - Speed Facts 20  
 Math - Tens and Hundreds 21  
 Math - Tic Tac Toe 21  
 Math - Timed Facts 20

Microteach 19  
 Meet the Romans 17  
 Memory Builder Microteach  
 Money Change 20  
 Morse Tutor 17  
 Multiplication Bingo  
 Name the States 17  
 Number Sequence 20  
 Number Series 22  
 Philosophy 21  
 Pythagoras & the Dragon 15  
 Preschool IQ Building 21  
 Preschool IQ Building Two 21  
 Preschool Fun 18  
 Quantitative Comparison 22  
 Reading Comprehension 19  
 Reading Comprehension 21  
 Rocket Spell 20  
 Scramble Spell 20  
 Scrambled Words 7  
 Sine Waves 17  
 Some Common Basic Programs 18  
 Spanish/English 22  
 Spanish Word Guide 17  
 Spatial Relations 18  
 Spelling Builder 17  
 Spelling Practice 20  
 Spellbound 18  
 Stars Number Guess 20  
 States and Capitals 17  
 Statistics 22  
 Story Builder Word Master 19  
 Sumpter (Hangman) 22  
 Tictactoe Spell 20  
 The War of the Samurai 15  
 Trap 18  
 Tricky Tutorials 16  
 Vocabulary One 22  
 Vocabulary Two 22  
 Vocational Reading Comprehension 21  
 Vowel Sounds (5 Programs) 20  
 Wanted 18  
 Word Mate 18  
 Word Scramble 18  
 Word Match 16

## BUSINESS

Business Decisions I 23  
 Microbiz 23

Nononsense Books 23  
 Visicalc™ 23

## PROFESSIONAL

Bar Chart 24  
 Digital Filter 24  
 Fourier Analyzer 24  
 Great Circle Equation Program 24  
 Higraph-Pie Chart 24  
 Multilinear 24  
 Regression I 24  
 Regression II 24  
 Roots 24  
 Transfunctional Analyzer 24  
 Three Base Calculators 24

## LANGUAGES AND UTILITIES

Basic A+™ 26  
 Datasm 65 25  
 Disk Detective 25  
 Disk Manager 25  
 Edit 6502™ 26  
 LP (800) 32  
 Lisp 2.0 25  
 Machine Language Monitor 25  
 Machine Language Monitor and Disassembler 25  
 OS/A+ 25  
 Screen Printer Program 26  
 Utility Pack 25

## GRAPHICS

3D Supergraphics 24  
 Curve - USA 25  
 Curve - Fit 25  
 Curve - Three D 25  
 Curve Program 25  
 Character Generator 24  
 Graphics Composer 24  
 Hidden Line 24  
 Micro-Painter 24  
 S3252 Plot and Draw 24  
 The Graphics Machine 24

## HARDWARE

### DISK DRIVES

Corvus 10MB Disk System 27  
Corvus 20MB Disk System 27  
Corvus 5MB Disk System 27  
Microlink Floppy Disk System 27  
Winchester Disk Systems 28

### MODEMS

Acoustic Coupler Modem 29  
ATC-3 Serial Modem 27  
Hayes Stack Smartmodem 27  
Microconnection 29  
Prentice Star Acoustic Modem 27

### PRINTERS

88G Printer 29  
ATC-1 Parallel Printer 35  
ATC-2 Serial Printer 32  
DP 2000 Printer 29  
Ren Tec Es Interface 29  
Sellum N-35 31  
Sellum N-77 30  
Sellum F-86 30  
Sprinter 2C Printer 29  
Sprinter 4C Printer 29  
Sprinter 80C Printer 29  
Parallel Printer Interface 30  
Screen Printer Interface 30  
Trendcom 200 Printer 35

### MISCELLANEOUS

A002 Single Sheet Feeders 35  
A007 Memory 2K Buffer 35  
Air Show 32  
AT-80 80 Col-Video Board 35  
AT-EP EPROM Programmer 35  
Corvus Mirror 32  
Corvus Multiplexer Network 34  
Datalink 35  
Easy I/O 35  
Hayes Stack Chronograph 32  
Hi-Pad Digitizers 35  
Hiplot Pen Plotters 35  
IBM Typewriter Converter 35  
MP-2508 Pen Plotter 32  
P-ROM Writer 35  
Personality Module 35

SIA-250 Plotter Serial Interface 32

Text-Speech Synthesizer 35

Type 'N' Talk 33

Versawriter 32

Versawriter 35

Watanabe Single Pen Plotter 33

Watanabe Six Pen Plotter 35

## ACCESSORIES

### CASES

Cassettes in Cases 37  
Computer Case 37  
Computer Cassettes 37  
Kassette/10 38  
Microcase 37  
Minikassette/10 38  
Monitor Case 37  
Printer Case 37  
Quest Computer Packs 37, 38

### CABLES

A021-C Cable Assembly 39  
A850E EPSON Printer Cable 39  
ATC-4 Monitor Cable 39  
ATC-5 Monitor Cable 39  
Serial & Parallel Cables 39

### PAPER

BASIC Programmer's Forms 38  
Custom Checks 38  
Snap-Apart Forms 38  
Pinfed 3×5 Cards 38  
Pinfed 4×6 Cards 38  
Pinfed #15 9½×11 38  
Pinfed #20 9½×11 30

### MISCELLANEOUS

DC-2 Robot 40  
Real Time Clock 40  
P-ROM Board without RAM 40  
Clean Cycle Kit 40  
Inmac Plus Diskettes 42  
Lestick  
Minifloppy Envelope and Binder Kit 37  
Organizer Stand 41  
Surge Sentry 41  
The Terrapin Turtle 41

## FURNITURE

### FURNITURE

Clear Stand 44  
Computable™ 43  
Computeak 43  
Computer Desk with Cabinet 43  
Computer Furniture 43  
Custom Desk 43  
Free Stand/Base 43  
Terminal Stand 44  
Tiered Stack/Tray 43

## PUBLICATIONS

### BOOKS

32 Basic Programs for Atari 46  
Atari Assembler 45  
Atari Basic 46  
Atari Sound and Graphics 45  
Atari 400/800 Personal Computer Guide 45  
Basic Computer Games  
COMPUTE! First Book of Atari 46  
Computers for Kids 46  
Computers for People™ 46  
Conversational Basic 45  
Games and Recreation 45  
How to Copyright Software 45  
Master Memory Map 46  
Picture This — Atari Pilot 46  
Pilot for Adults and Beginners 46  
Pilot for Kids 46  
Some Common Basic Programs  
No Nonsense Books 46  
The Atari Sourcebook™ 46  
105 Microsoft+ Basic Programs 46

### MAGAZINES

Analog-800 Magazine 47  
Classroom Computer News 47  
COMPUTE! Magazine 47  
Education Computer Magazine 47  
Micromedia Magazine 47

Purser's Magazine 47  
Softside Magazine 47  
Software Newsletter 47  
The Computing Teacher 47

# \$100,000 IN PRIZES!



## Put your programs before thousands of people

# ASAP<sup>®</sup>

They're out there—thousands of Atari® personal computer users. People who have discovered the versatile, easy-to-use ATARI 400™ and ATARI 800™ computers. They enjoy Atari's uniquely human-engineered programs for personal computing.

Perhaps you've developed such a program. One which Atari lovers will use and enjoy. Then you'll be excited about the Atari Software Acquisition Program—ASAP. It's your chance to put your programs before those thousands of Atari enthusiasts. And, right now, Atari is offering \$100,000 in prizes and cash for the best programs submitted in the Atari Software Acquisition Program Contest!

#### Start With The Atari Software Acquisition Program

You begin by sending your program, with documentation, to Atari.® We'll review it, and, if accepted, we'll publish it in our new Atari Program Exchange catalog, APX. APX will be distributed free to all registered Atari computer owners.

These Atari computer owners can then order programs by mail through the Atari Program

®The Atari Software Acquisition Program.

®Authors must assign all rights to programs submitted to Atari, Inc., upon acceptance by Atari. No guarantee of acceptance is implied or stated.

Exchange. And, each time they order one of your programs, you'll receive payment.®

#### Up To \$100,000 In Prizes For The Best Programs

In addition to offering the APX catalog, Atari is sponsoring the ASAP Contest for people whose programs are published in APX. There are annual prizes of Atari products awarded quarterly, valued at \$75,000. With a yearly Grand Prize of \$25,000 cash!

#### We Want Programs For People

We're most interested in adding programs for personal finance, self-improvement, education and home entertainment. The kind most people will use and enjoy.

We're backing our commitment to more programs for people with our new ASAP Center. The ASAP Center is staffed with Atari technical experts to assist serious software writers to develop and/or convert their programs for the ATARI 400 and ATARI 800 computers. The ASAP Center has the hardware and manuals necessary to do the job.

# Payment made quarterly, based on previous quarter's sales.

Winners in the ASAP Contest will be determined by criteria and judging of Atari, Inc. Employees of Atari, Inc., and their immediate families are not eligible for the contest.

© 1981, Atari, Inc.

#### Find Out More

To find out more details on the Atari Software Acquisition Program, or the ASAP Contest, call the special ASAP TOLL-FREE number:

**800/538-1862**

**(In California, 800/672-1850)**


Or, stop by any one of these participating local Atari dealers listed below for brochures and application forms.



**ATARI<sup>®</sup>**  
**COMPUTERS FOR PEOPLE<sup>™</sup>**

W A Warner Communications Company



A Warner Communications Company 

PRINTED IN U.S.A.

C060018 REV. 1