

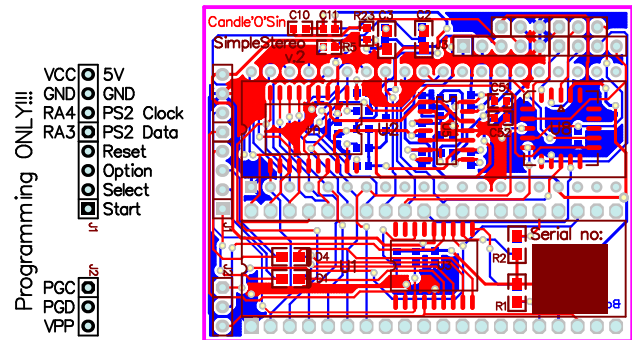
VBXE--Decoder - 0 or not connected - Covox address space selected by Mode pin
 1 - Use VBXE decoder (connect decoder output to D6xx pin)

Mode - 1 or not connected - Covox at D280
 0 - Covox at D600

EnableCovox - 1 or not connected - Covox enabled
 0 - Covox disabled

EnableStereo - 1 or not connected - Stereo enabled
 0 - Stereo Disabled, both POKEY chips will play the same sounds

VBXE--Decoder	0	1	2	3	4	5	6	7	8	9	10	11	12	13	14	15
Mode	0	1	2	3	4	5	6	7	8	9	10	11	12	13	14	15
EnableCovox	0	1	2	3	4	5	6	7	8	9	10	11	12	13	14	15
EnableStereo	0	1	2	3	4	5	6	7	8	9	10	11	12	13	14	15
D6xx	0	1	2	3	4	5	6	7	8	9	10	11	12	13	14	15
EnablesStereo	0	1	2	3	4	5	6	7	8	9	10	11	12	13	14	15
EnablesCovox	0	1	2	3	4	5	6	7	8	9	10	11	12	13	14	15
A4	0	1	2	3	4	5	6	7	8	9	10	11	12	13	14	15
EnablesCovox	0	1	2	3	4	5	6	7	8	9	10	11	12	13	14	15
GND	0	1	2	3	4	5	6	7	8	9	10	11	12	13	14	15
MONO-Out	0	1	2	3	4	5	6	7	8	9	10	11	12	13	14	15
MONO-Beep	0	1	2	3	4	5	6	7	8	9	10	11	12	13	14	15
MONO-Out	0	1	2	3	4	5	6	7	8	9	10	11	12	13	14	15
Stereo-R	0	1	2	3	4	5	6	7	8	9	10	11	12	13	14	15
Stereo-L	0	1	2	3	4	5	6	7	8	9	10	11	12	13	14	15



While programming, please remove board from Atari
 Also, please remember to remove BOTH POKEY CHIPS while programming
 Failing to do so, may damage Your computer or chips
 For additional information, please see the schematics of the board or Atari computer